



Kunststoffscharnier schwer

Heavy-duty Plastic Hinge

Beschreibung nicht aushängbar
für Flächenelemente und Aluminiumprofile, mit je zwei Steckplätzen für Zentrierbolzen

Material Flügel: Kunststoff PA, glasfaserverstärkt
Achse: Edelstahl
Montageset: Stahl

Oberfläche Achse: blank
Montageset: verzinkt

Farbe Flügel: schwarz

Befestigung vorderseitig mit Senkschraube M6

Montageset 1 2 Schrauben DIN 7991 - M6 x 16,
2 Hammermuttern Nut 8 - M6

Montageset 2 1 Schraube DIN 7991 - M6 x 16,
1 Hammermutter Nut 8 - M6,
1 Schraube DIN 7991 - M6 x 18,
1 Hammermutter Nut 10 - M6

Montageset 3 2 Schrauben DIN 7991 - M6 x 18,
2 Hammermuttern Nut 10 - M6

Liefereinheit 10 Stück

Extras elektrostatisch ableitfähig, weitere Größen,
weitere Farben auf Anfrage

Description *Non-detachable*
To hinge panels or aluminum profiles;
each side has two holes for centering bolts

Material Wings: Nylon PA, glass fibre reinforced
Bolt: Stainless steel
Assembly set: Steel

Surface Bolt: Plain
Assembly set: Zinc plated

Color Wings: Black

Fastening From the front, using M6 countersunk screws

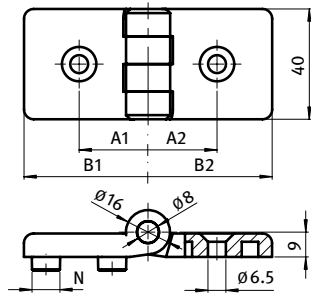
Assembly Set 1 2 screws DIN 7991 - M6 x 16,
2 hammer nuts slot 8 - M6

Assembly Set 2 1 screw DIN 7991 - M6 x 16,
1 hammer nut slot 8 - M6,
1 screw DIN 7991 - M6 x 18,
1 hammer nut slot 10 - M6

Assembly Set 3 2 screws DIN 7991 - M6 x 18,
2 hammer nuts slot 10 - M6

Pack Quantity 10 pieces

Specials electrostatically conductive, other sizes, other
colors on request



Kunststoffscharnier Plastic Hinge	N	A1 [mm]	A2 [mm]	B1 [mm]	B2 [mm]	F _{max} [N]	FR _{max} [N]	Gewicht [g] Weight [g]	Teil-Nr. Part #
30 / 30	-	17.5	17.5	30.0	30.0	150.0	280.0	36.0	095KS3030F00
30 / 30	8	17.5	17.5	30.0	30.0	150.0	280.0	37.0	095KS3030F08
30 / 40	-	17.5	22.5	30.0	39.0	150.0	280.0	38.0	095KS3040F00
30 / 40	8	17.5	22.5	30.0	39.0	150.0	280.0	39.0	095KS3040F08
30 / 40	8 / 10	17.5	22.5	30.0	39.0	150.0	280.0	39.0	095KS3040F0810
30 / 45	-	17.5	25.0	30.0	45.0	150.0	280.0	39.0	095KS3045F00
30 / 45	8 / 10	17.5	25.0	30.0	45.0	150.0	280.0	40.0	095KS3045F0810
30 / 60	-	17.5	32.5	30.0	60.0	130.0	280.0	43.0	095KS3060F00
30 / 60	8 / 10	17.5	32.5	30.0	60.0	130.0	280.0	44.0	095KS3060F0810
40 / 40	-	22.5	22.5	39.0	39.0	150.0	280.0	40.0	095KS4040F00
40 / 40	8	22.5	22.5	39.0	39.0	150.0	280.0	42.0	095KS4040F08
40 / 40	8 / 10	22.5	22.5	39.0	39.0	150.0	280.0	43.0	095KS4040F0810
40 / 40	10	22.5	22.5	39.0	39.0	150.0	280.0	45.0	095KS4040F10
40 / 45	-	22.5	25.0	39.0	45.0	150.0	280.0	41.0	095KS4045F00
40 / 45	8 / 10	22.5	25.0	39.0	45.0	150.0	280.0	43.0	095KS4045F0810
40 / 45	10	22.5	25.0	39.0	45.0	150.0	280.0	45.0	095KS4045F10
40 / 60	-	22.5	32.5	39.0	60.0	130.0	280.0	45.0	095KS4060F00
40 / 60	8 / 10	22.5	32.5	39.0	60.0	130.0	280.0	48.0	095KS4060F0810
40 / 60	10	22.5	32.5	39.0	60.0	130.0	280.0	49.0	095KS4060F10



Kunststoffscharnier <i>Plastic Hinge</i>	N	A1 [mm]	A2 [mm]	B1 [mm]	B2 [mm]	F _{Amax} [N]	F _{Rmax} [N]	Gewicht [g] <i>Weight [g]</i>	Teil-Nr. <i>Part #</i>
45 / 45	-	25.0	25.0	45.0	45.0	150.0	280.0	44.0	095KS4545F00
45 / 45	10	25.0	25.0	45.0	45.0	150.0	280.0	46.0	095KS4545F10
45 / 60	-	25.0	32.5	45.0	60.0	130.0	280.0	47.0	095KS4560F00
45 / 60	10	25.0	32.5	45.0	60.0	130.0	280.0	50.0	095KS4560F10
60 / 60	-	32.5	32.5	60.0	60.0	130.0	280.0	51.0	095KS6060F00
60 / 60	10	32.5	32.5	60.0	60.0	130.0	280.0	53.0	095KS6060F10
30 / 30, inkl. Montageset 1 <i>With assembly set 1</i>	8	17.5	17.5	30.0	30.0	150.0	280.0	42.0	095KS3030F08S02
30 / 40 inkl. Montageset 2 <i>With assembly set 2</i>	8 / 10	17.5	22.5	30.0	39.0	150.0	280.0	44.0	095KS3040F0810S01
30 / 45 inkl. Montageset 2 <i>With assembly set 2</i>	8 / 10	17.5	25.0	30.0	45.0	150.0	280.0	45.0	095KS3045F0810S02
30 / 60 inkl. Montageset 2 <i>With assembly set 2</i>	8 / 10	17.5	32.5	30.0	60.0	130.0	280.0	49.0	095KS3060F0810S01
40 / 40 inkl. Montageset 3 <i>With assembly set 3</i>	10	22.5	22.5	39.0	39.0	150.0	280.0	50.0	095KS4040F10S01
45 / 45 inkl. Montageset 3 <i>With assembly set 3</i>	10	25.0	25.0	45.0	45.0	150.0	280.0	51.0	095KS4545F10S03
45 / 60 inkl. Montageset 3 <i>With assembly set 3</i>	10	25.0	32.5	45.0	60.0	130.0	280.0	55.0	095KS4560F10S01
60 / 60 inkl. Montageset 3 <i>With assembly set 3</i>	10	32.5	32.5	60.0	60.0	130.0	280.0	58.0	095KS6060F10S01

