



Zentralverbinder

Central Connector

**NEU
NEW**

Beschreibung Edelstahl zur rechtwinkligen Verbindung von zwei Aluminiumprofilen; zur Montage muss ein Loch in eines der Profile gebohrt werden

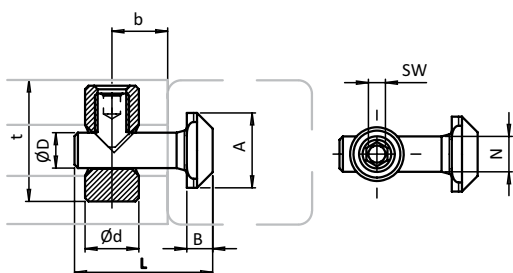
Material Edelstahl

Liefereinheit 10 Stück

Description *Stainless Steel* To connect two aluminum profiles at right angles; a hole must be drilled through one of the profiles to provide access to the tightening screw

Material *Stainless steel*

Pack Quantity 10 pieces



Ausführung Version	N	A [mm]	B [mm]	b [mm]	d [mm]	D [mm]	t [mm]	L [mm]	SW [mm]	Gewicht [g] Weight [g]	Teil-Nr. Part #
0° / 90°	6.0	11.0	3.8	10.0	8.0	5.2	18.5	20.3	2.5	9.5	B 099B060805