

Panel-Point



A Low Cost, High Power SCADA Solution For Process Control

Panel-Point is a PC based mini SCADA package that can run on a Microsoft Windows based system. Panel-Point is compatible with Windows 2000, Windows XP or better. Embedded Windows XP is also supported. The target machine can be any type of PC, a standard desktop, a small touch screen system running embedded XP, or even a Panel-PC.

The system is configured using IMO's Configuration Manager software (V2.0). Screens have a full colour graphical capability, with shapes, lines, colour bitmaps and animation. All system fonts are supported for static text and point values.

Any screen object can have a touch property, which can trigger a range of actions. Where a touch screen is available these really are touch objects on the screen, otherwise they are objects that can be clicked with a mouse.

Screens of all popular resolutions can be configured, as well as custom resolution screens.

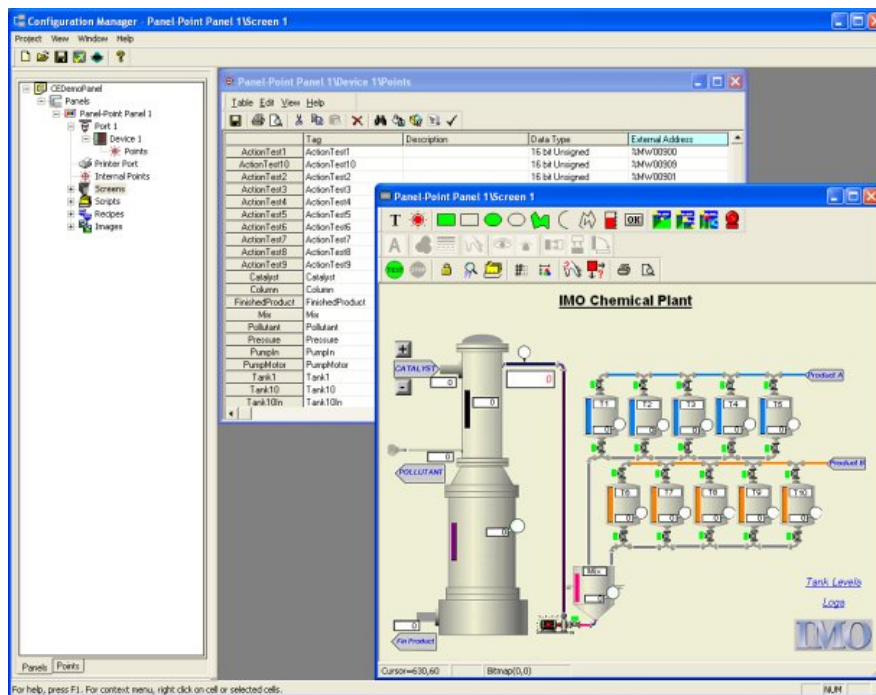
Point actions, recipes and scripting are available to complement the graphics system.

The runtime software (Panel-Point itself) is installed separately to the Configuration Software, and can exist either locally or on another machine. Configuration is then downloaded over Ethernet from the configuration machine to the runtime machine.

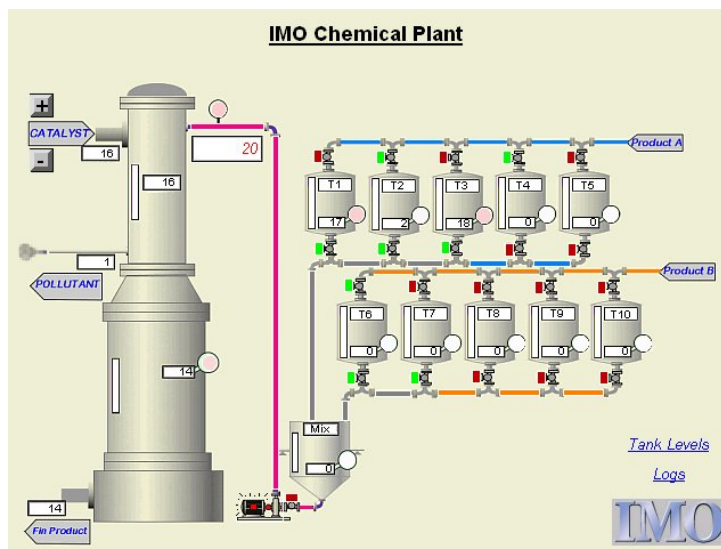
A central OPC Server, based on IMO's 'Odin' product, provides communications. A range of serial and network protocols are available.

Since the comms engine is an OPC Server, data is available to any third party OPC Client software, either running locally or on another machine on the network.

Historical data logging can be added using IMO's Loki data logger software, to complete your SCADA software suite!



Panel-Point has a simple Windows™ based configuration interface, via IMO's Configuration Manager software.



Panel-Point runtime is a full screen colour graphics based application with touch or mouse control

Supported Devices...

- Allen Bradley KF3
- Baldor Drives
- Control Techniques Drives
- Festo PLC's
- Hitachi EH and EC PLC's
- Keyence PLC's
- Mitsubishi FX PLC's
- Modicon PLC's
- Omron PLC's
- Siemens S5, S7 200 & S7 300

Supported IMO Devices...

- K Series PLC's
- G Series PLC's
- G Series Enet (TCP/IP)
- iSmart
- i3
- Jaguar Drives
- iDrive
- MI HMI

Features

Configuration Features:

- IMO's Configuration Manager software is used to configure projects, as used for the MI HMI range
- Screens are configured using the screen editor, with a configurable screen size
- Graphical objects include point values, text, boxes, ellipses, circles, arcs, shapes, lines, buttons, bar graphs, bitmaps, dynamic bitmaps and logs
- Objects have configurable fonts, fill colour, pen colour and touch properties
- Dynamic fill colours based on point values
- Animation is available through rotation, translation, visibility and blink properties, driven from point values
- Dynamic bitmaps provide simple 'flicker book' animation
- Library of bitmaps included containing tanks, pipes, pumps, boilers, etc.
- Point values and bar graphs show changing data values
- Screen editor has 'test mode' to see what your screen will look like when animated
- Multiple ports and devices with a wide range of protocols
- Points are configured via a spreadsheet, they can have exception based actions and message texts
- Special system data items can be used which contain comms statistics, current screen name, last downloaded recipe, selection of audible warning sounds and the system time and date.
- Internal point data can be configured
- Script editor allows Visual Basic like scripts to be added to a project
- Security can be configured for screen entry, driveouts and recipes
- Recipes and recipe templates supported
- Alarm and Event logging can be configured
- Configuration can be run locally or downloaded via Ethernet to a remote machine

Runtime Features:

- Runtime is a full screen colour graphical application
- Task manager allows monitoring and setting of values, viewing of logs, and shutdown of software
- For local operation the runtime runs the last compiled configuration
- For remote operation the runtime allows a project to be uploaded or downloaded via the Panel-Point Boot! software
- Data entry via a touch screen keyboard if required
- Supports tag selection, data value entry and recipe editing via edit boxes and drop down boxes
- Configured touch objects navigate between screens
- Printing support via network, USB or LPT printer
- Alarm and Event logs are stored in files, they are persistent and available off line
- Up to 1000 entries in the alarm log and 1000 entries in the event log
- Internal data items are persistent
- Automatically runs Loki Data Logger if required, and if installed
- Comms configuration exportable to the Odin software

OPC Features:

- OPC Server supports v1.0 and v2.0 of the OPC Data Access specification
- COM and DCOM supported, DCOM offers connection over TCP/IP
- Connect IMO Loki, or any other OPC Client package
- Test client included

Minimum PC Specification:

- Pentium III, 1GHz processor
- 128MB RAM
- 500MB available space on the system drive
- CD-ROM or DVD-ROM drive
- 100Mb Network Card
- Ethernet access either via wired or wireless network
- Super VGA (800x600) or higher resolution monitor with 256 colours
- Microsoft Mouse or compatible pointing device
- Supported Operating Systems: Windows XP Home Edition, Windows XP Professional, Windows XP Media Center Edition, Windows XP 64-Bit Edition, Windows XP Embedded, Windows Server 2003, Windows 2000 Professional, Windows 2000 Server

IMO Precision Controls
United Kingdom

Tel: +44 (0)20 8452 6444
Fax: +44 (0)20 8450 2274

IMO Jeambrun
France

Tel: +33 (0)4 42 83 82 00
Fax: +33 (0)4 42 83 82 75

IMO Automazione
Italy

Tel: 800 783281
Fax: 800 783282

IMO
Canada

Tel: (905) 265 9844
Fax: (905) 265 1749

www.imopc.com