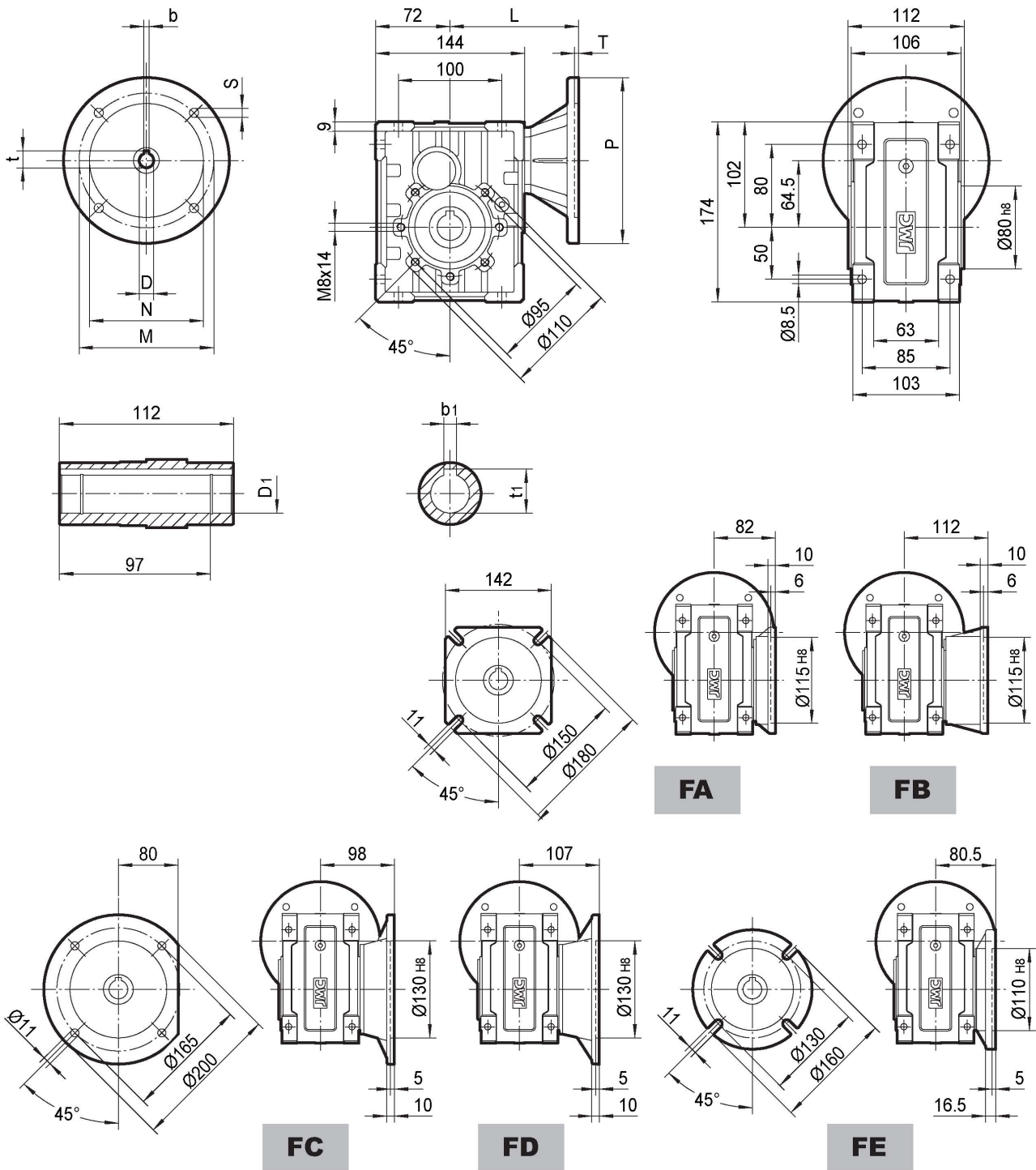


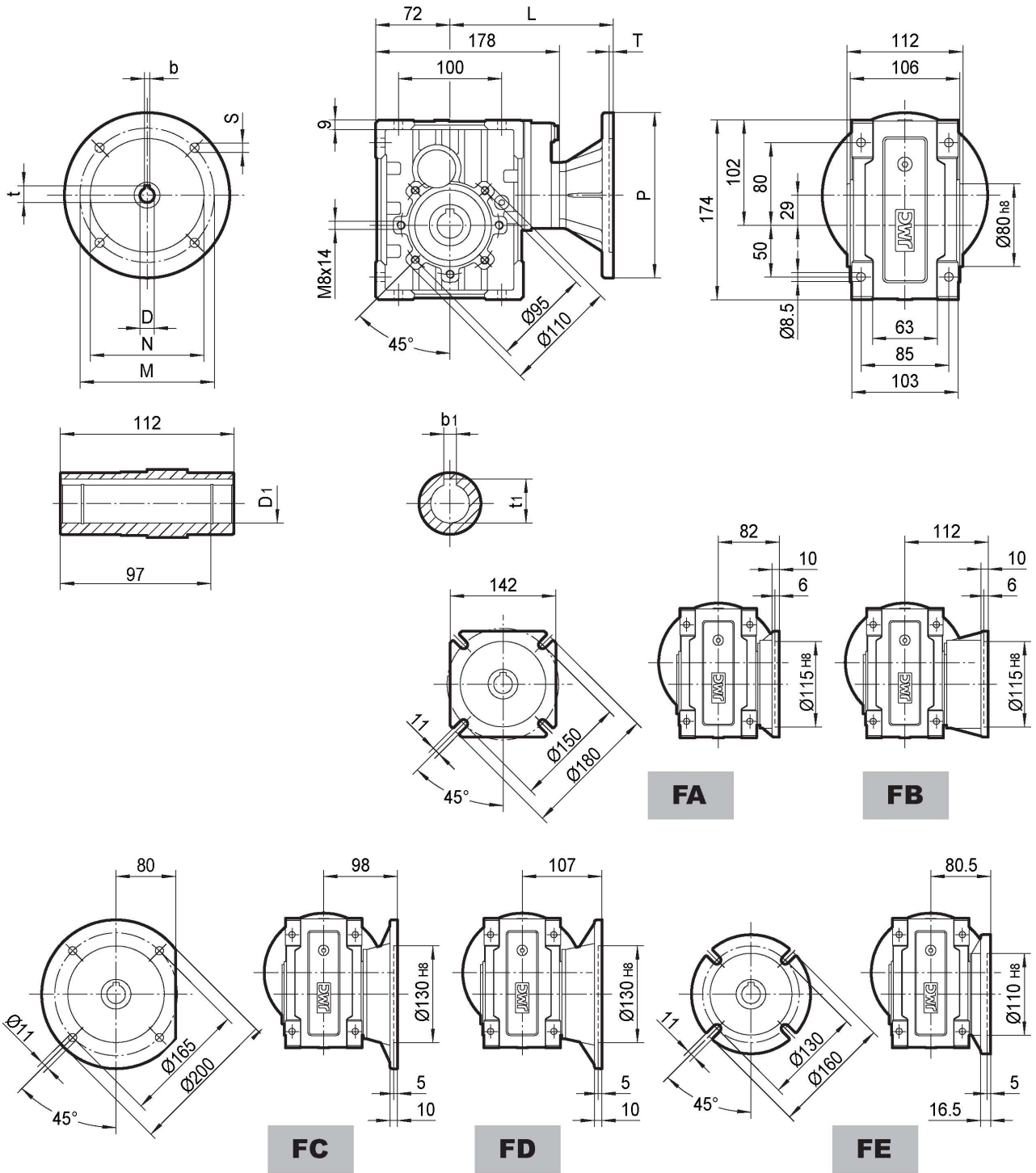
TKM38B..



IEC	D _{E8}	b	t	P	M	N	S	T	L	D ₁ H ₈	b ₁	t ₁
63B5	11	4	12.8	140	115	95	9	4	117	25	8	28.3
71B5	14	5	16.3	160	130	110	9	4	124	28*	8	31.3
71B14	14	5	16.3	105	85	70	7	4	124	30*	8	33.3
80B5	19	6	21.8	200	165	130	11	4	144	* Only on request		
80B14	19	6	21.8	120	100	80	7	4	144			
90B5	24	8	27.3	200	165	130	11	4	144			
90B14	24	8	27.3	140	115	95	9	4	144			

Weight without motor
≈ 6.0 kg

TKM38C..

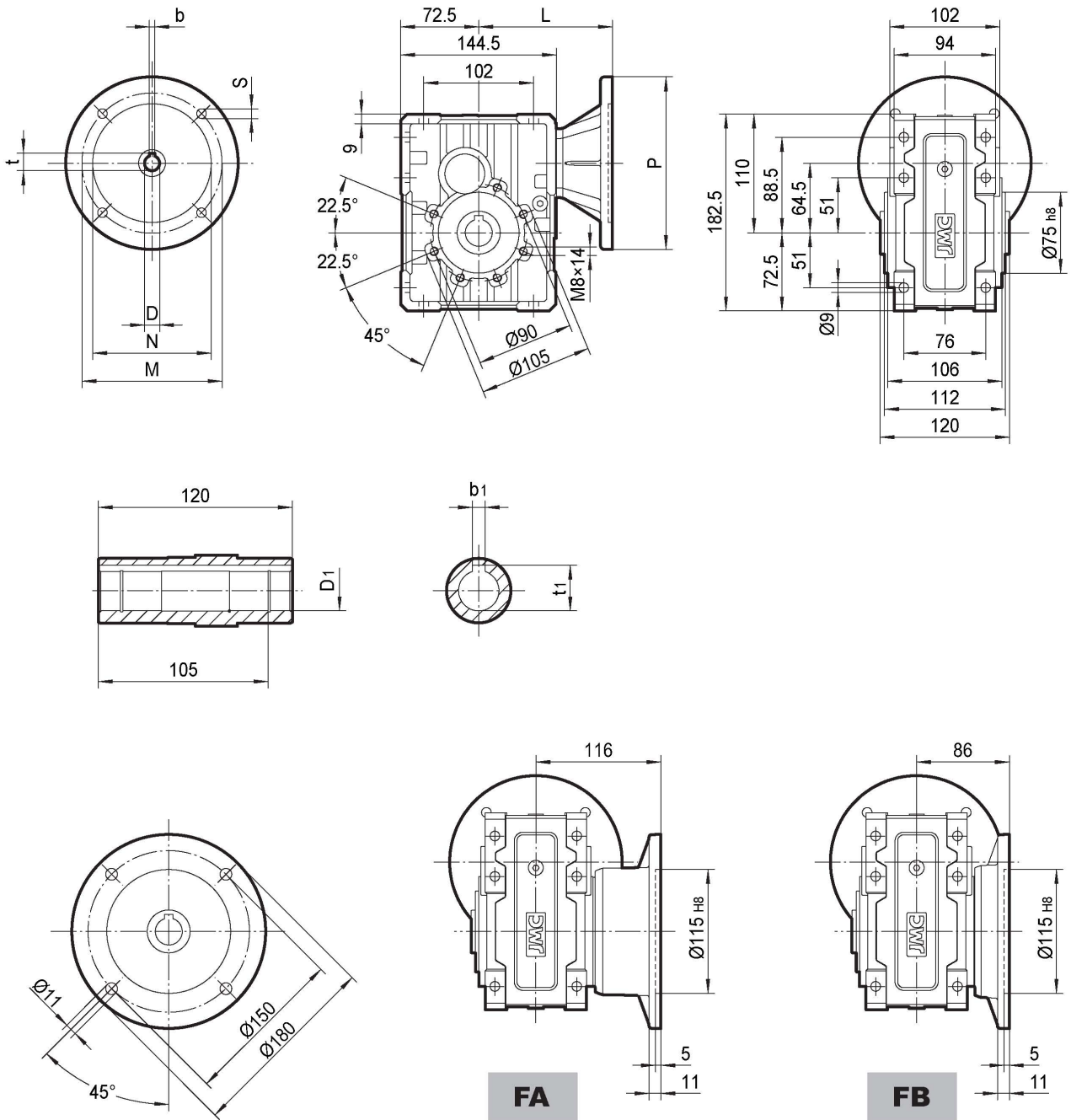


IEC	D _{E8}	b	t	P	M	N	S	T	L	D1 _{H8}	b1	t1
63B5	11	4	12.8	140	115	95	9	4	151	25	8	28.3
71B5	14	5	16.3	160	130	110	9	4	158	28*	8	31.3
71B14	14	5	16.3	105	85	70	7	4	158	30*	8	33.3
80B5	19	6	21.8	200	165	130	11	4	178	* Only on request		
80B14	19	6	21.8	120	100	80	7	4	178			

Weight without motor
≈ 6.8 kg

7.2 TKB.. Outline Dimension

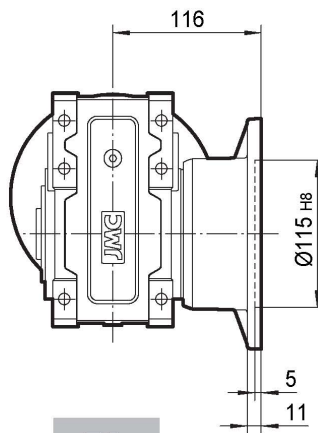
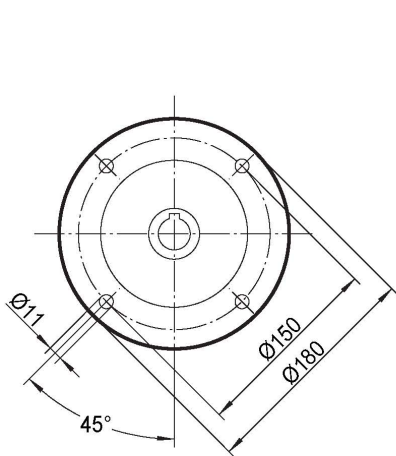
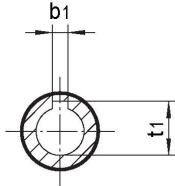
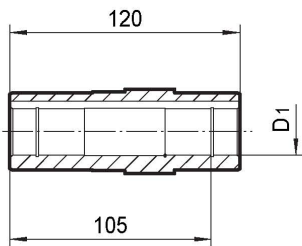
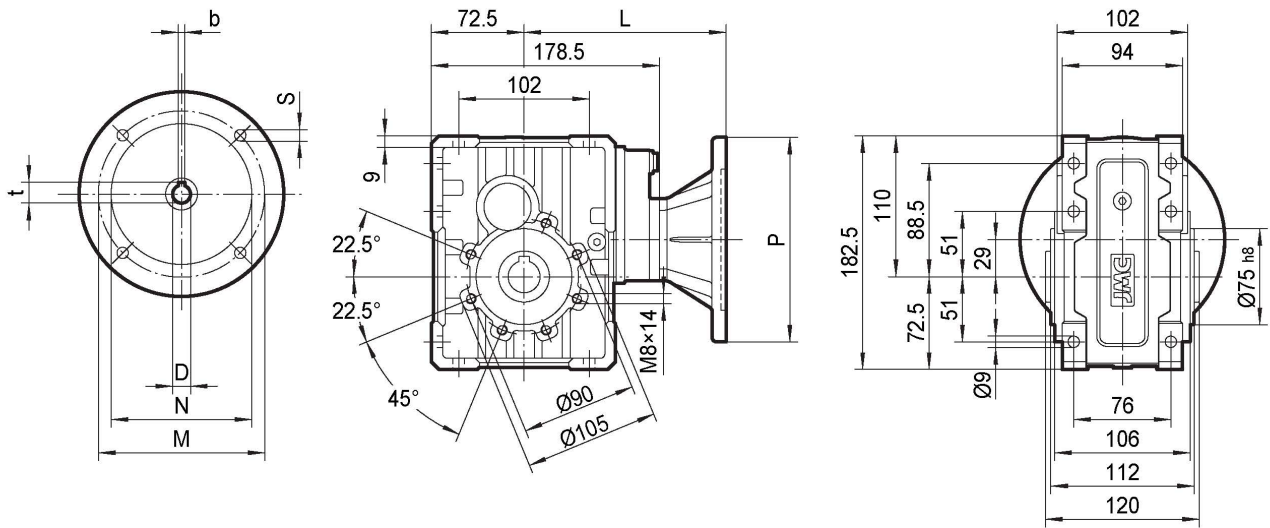
TKB38B..



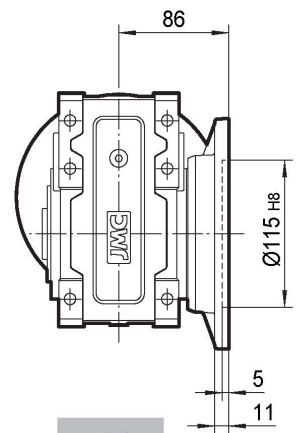
IEC	D _{E8}	b	t	P	M	N	S	T	L	D1 _{H8}	b1	t1
63B5	11	4	12.8	140	115	95	9	4	117	25	8	28.3
71B5	14	5	16.3	160	130	110	9	4	124	28*	8	31.3
71B14	14	5	16.3	105	85	70	7	4	124	30*	8	33.3
80B5	19	6	21.8	200	165	130	11	4	144	* Only on request		
80B14	19	6	21.8	120	100	80	7	4	144			
90B5	24	8	27.3	200	165	130	11	4	144			
90B14	24	8	27.3	140	115	95	9	4	144			

Weight without motor
≈ 6.0 kg

TKB38C..



FA



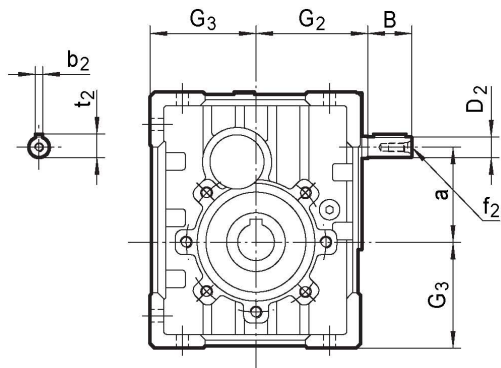
FB

IEC	D _{E8}	b	t	P	M	N	S	T	L	D1 _{H8}	b1	t1
63B5	11	4	12.8	140	115	95	9	4	151	25	8	28.3
71B5	14	5	16.3	160	130	110	9	4	158	28*	8	31.3
71B14	14	5	16.3	105	85	70	7	4	158	30*	8	33.3
80B5	19	6	21.8	200	165	130	11	4	178	* Only on request		
80B14	19	6	21.8	120	100	80	7	4	178			

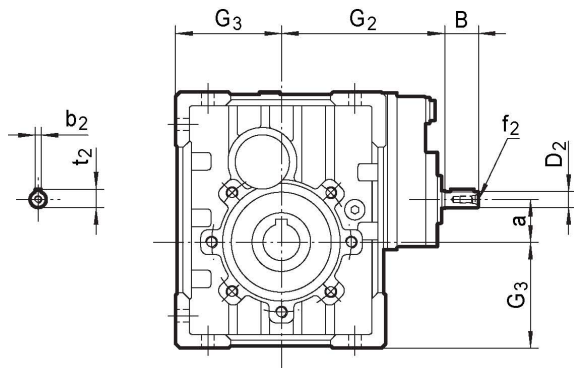
Weight without motor
≈ 6.8 kg

7.3 TKM..HS Outline Dimension

TKM..B..HS



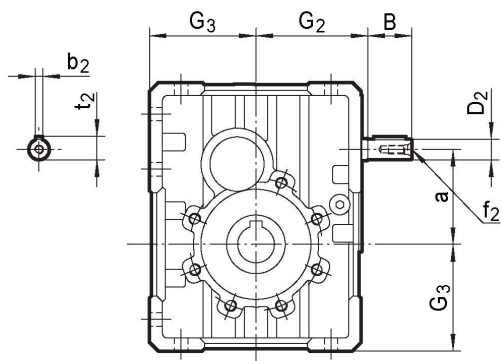
TKM..C..HS



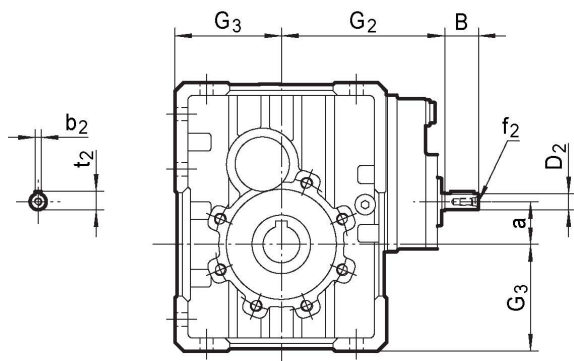
	B	D _{2j6}	G ₂	G ₃	a	b ₂	f ₂	t ₂
TKM28B	23	11	65	60	57	4	-	12.5
TKM28C	23	11	100	60	21.5	4	-	12.5
TKM38B	30	14	76	72	64.5	5	M6	16
TKM38C	23	11	111	72	29	4	-	12.5
TKM48B	40	16	91	86	74.5	5	M6	18
TKM48C	30	14	132	86	30.5	5	M6	16
TKM58B	40	19	107	103	88	6	M6	21.5
TKM58C	30	14	148	103	44	5	M6	16
TKM68B	50	24	132	127.5	108	8	M8	27
TKM68C	40	19	181	127.5	52	6	M6	21.5

7.4 TKB..HS Outline Dimension

TKB..B..HS



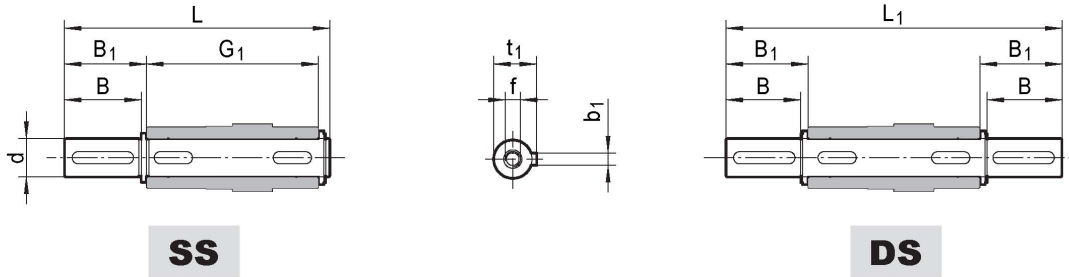
TKB..C..HS



	B	D _{2j6}	G ₂	G ₃	a	b ₂	f ₂	t ₂
TKB38B	30	14	76	72.5	64.5	5	M6	16
TKB38C	23	11	111	72.5	29	4	-	12.5
TKB48B	40	16	91	87	74.5	5	M6	18
TKB48C	30	14	132	87	30.5	5	M6	16
TKB58B	40	19	107	100	88	6	M6	21.5
TKB58C	30	14	148	100	44	5	M6	16
TKB68B	50	24	132	125	108	8	M8	27
TKB68C	40	19	181	125	52	6	M6	21.5

8. ACCESSORIES OUTLINE DIMENSION SHEET

8.1 Output Shafts

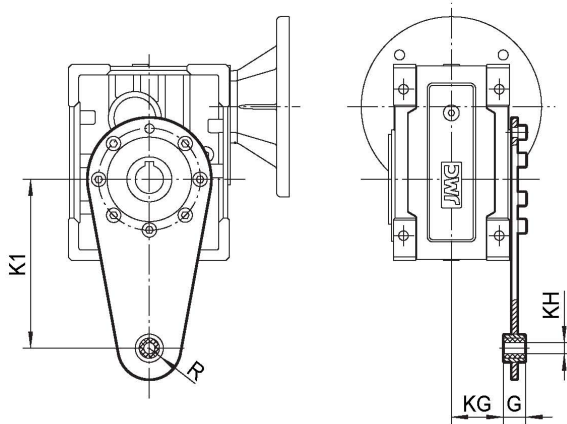


	d _{h6}	B	B ₁	G ₁	L	L ₁	f	b ₁	t ₁
TKM28	25	50	53.5	92	153	199	M10x22	8	28
TKM38	25	50	53.5	112	173	219	M10x22	8	28
TKM48	28	60	63.5	120	192	247	M10x22	8	31
TKM58	35	80	84.5	140	234	309	M12x28	10	38
TKM68	42	80	84.5	155	249	324	M16x36	12	45
TKB38	25	60	65	120	192	246.4	M8x19	8	28
TKB48_d 28	28	60	65	127	199	255	M8x20	8	31
TKB48_d 30	30	60	65	127	199	255	M10x22	8	33
TKB58	35	60	65	140	214	268	M12x22	10	38
TKB68	42	75	80	155	244	313.5	M12x28	12	45

* Only on request

8.2 Torque Arm

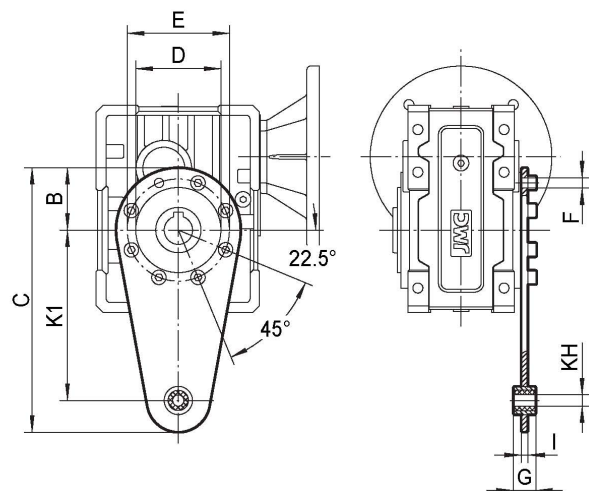
8.2.1 TKM.. Torque Arm



	K1	G	KG	KH	R
TKM28	100	14	38.5	10	18
TKM38	150	14	49	10	18
TKM48	200	25	47.5	20	30
TKM58	200	25	57.5	20	30
TKM68	250	30	62	25	35

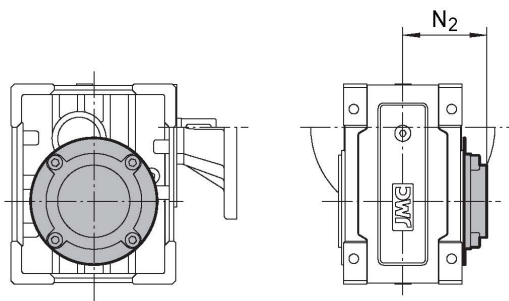
8.2.2 TKB.. Torque Arm

	K1	B	C	D	E	F	G	KH	I
TKB38	150	55	233	75	90	9	20	10	6
TKB48	200	60	300	90	110	9	25	20	6
TKB58	200	80	318	110	130	11	25	20	6
TKB68	250	100	388	130	165	13	25	20	6



8.3 Cover

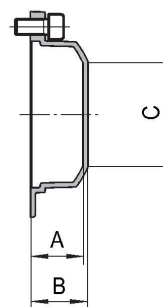
8.3.1 TKM.. Cover



	N₂
TKM28	63
TKM38	73
TKM48	79
TKM58	94
TKM68	102

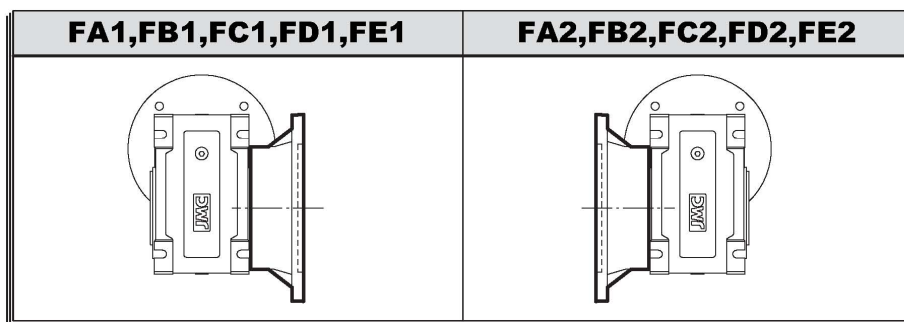
8.3.2 TKB.. Cover

	A	B	C
TKB38	26.5	29	Φ35
TKB48	24.5	27	Φ54
TKB58	26.5	29	Φ71
TKB68	27.5	30	Φ89



9. INSTALLATION POSITIONS DIAGRAM

9.1 Position diagram for output flange



Unless specified otherwise, the gear units is supplied with the flange in pos. **F.1** referred to position **B3**.

9.2 Position diagram for single output shaft

