

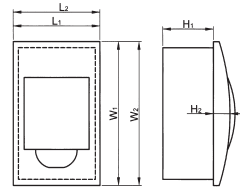


Plastic distribution boxes for flush mounting

The distribution boxes are designed for mounting in newly built buildings or buildings in reconstruction. They are a module box with mounted protective devices of the given flats electrical current circuit circles. They are supplied with transparent door for each row opening upwards to 90°. They are made of white self-extinguishing plastic, resistant to heat and high temperature with IP 40. The mounted device in the box is protected from indirect contact to the current leading parts. They are offered with DIN-rail for device mounting and terminal blocks for the neutral and grounded conductor joining. Mounted through building-in in openings on the wall under plaster or in plasterboard (through special brackets).

- Technical data:**
- * Maximum insulation voltage: 690V; 50Hz
 - * fire resistance rate: UL 94
 - * IP rate: IP 40
 - * Class of current limiting: 2

Documents corresponding to the product:
Standard EN 62 208;
EN 60439-1;EN 60 439-3



Number of rows	Module capacity (number of devices)	Terminal strips number	Openings number	Dimensions (mm)			Packing / Box	Catalogue number
				L	W	H		
1	4	2	9	110	205	75	1 / 20	60041
1	6	2	9	150	205	75	1 / 20	60061
1	8	2	14	190	205	75	1 / 20	60081
1	12	3	17	260	205	75	1 / 10	60121
1	18	4	25	365	220	75	1 / 10	60181
2	24	6	34	270	330	75	1 / 10	60241
3	36	8	43	310	475	85	1 / 5	60361



catalogue number 60085

Note: For plasterboard mounting should be used special brackets (4 pcs. set, catalogue number 60085, general packing - 10 sets).



Moisture-proof distribution boxes for surface mounting - IP 55

The distribution boxes are designed for mounting in newly built buildings or buildings in reconstruction. They are a module box with mounted protective devices of the given flats electrical installation current circles. They are supplied with transparent door for each row opening upwards to 90°. They are made of white non-self-extinguishing plastic, resistant to heat and high temperature. The special design of the lids and gaskets provides IP rate IP 55. The mounted device in the box is protected from indirect contact to the current leading parts. They are offered with DIN-rail for device mounting and terminal strips for the neutral and earthing conductor joining. For direct wall mounting with screws.

- Technical data:**
- * Maximum insulation voltage: 690V; 50Hz
 - * fire resistance rate: UL 94
 - * IP rate: IP 55
 - * Class of current limiting: 2

Documents corresponding to the product:
Standard EN 62 209;
EN 60439-1;EN 60 439-3

Type	Number of rows	Module capacity (number of devices)	Terminal strips number	Openings number	Dimensions (mm)			Packing / Box	Catalogue number
					L	W	H		
WP4	1	4	2	9	127	214	93	1 / 20	60100
WP6	1	6	2	9	162	214	93	1 / 20	60101
WP8	1	8	2	14	216	214	93	1 / 20	60102
WP12	1	12	3	17	270	214	93	1 / 12	60103
WP18	1	18	4	25	378	233	93	1 / 8	60104
WP24	2	24	6	34	340	288	93	1 / 8	60105