

# Miniature Circuit Breakers B4/B6/B10, Residual Current Circuit Breakers & Isolating Switches



The IMO range of miniature circuit breakers have been designed for protection of electrical installations against overload and short circuits and are manufactured in accordance with EN60898.

Tripping characteristics in accordance with B, C and D type curves

- Curve B: 3-5  $I_n$
- Curve C: 5-10  $I_n$
- Curve D: 10-20  $I_n$



## Options and ordering codes

	<b>B6</b>	<b>B</b>	<b>10</b>	<b>16A</b>
MCB 4kA	<b>B4</b>			Rated current Amps
MCB 6kA	<b>B6</b>			
MCB 10kA	<b>B10</b>			
Operating characteristic		<b>B</b>		
Operating characteristic		<b>C</b>		
Operating characteristic		<b>D</b>		
Single pole			<b>10</b>	
Single pole + Neutral			<b>1N</b>	
Two pole			<b>20</b>	
Three pole			<b>30</b>	
Three pole + Neutral			<b>3N</b>	

## Selection chart

Please contact IMO
  4.5kA
  6kA
  10kA

Type	B operating characteristics			C operating characteristics			D operating characteristics		
	1	1N	2	3	3N	1	2	3	
Poles									
Rated current A mps	2								
	4								
	6								
	10								
	16								
	20								
	25								
	32								
	40								
50									
63									
Weight (g/pc)	100	100	200	200	300	400	100	200	300
Packing(Qty)	12	12	6	6	4	3	12	6	4

## Specification

Rated voltage: 230 (240) / 400 (415)V AC, 50 / (60)Hz
Rated insulation voltage Ui: 500V
In accordance with: EN60898, EN60947-2, UNE20317
Terminal capacity: 35mm <sup>2</sup> solid conductor, 25mm <sup>2</sup> stranded conductor
Breaking capacity as per IEC60898 4.5kA curve 1+N poles, 6kA B curve 1 pole, 10kA C & D curve 1 - 3+N pole
Breaking capacity applying IEC60947-2: 10kA on B,C,D,1,2,3 and 3+N versions, up to 15kA on 40A and above
Mounting: on Rail EN60715 (EN50022)
Protection degree: IP20
Temperature range: -5°C - +40°C, average temperature not to exceed 35°C

# Miniature Circuit Breakers B4/B6/B10



## Accessories

### Auxiliary Switch

Rated current	6A @ 230VAC & 24VDC 3A @ 400VAC
Dielectric Strength	2000V / 1min
Terminal capacity	1-4 mm <sup>2</sup>
Standards	EN 62019, EN 60947-5-1

**Auxiliary contact:** for monitoring the status of the protection device (open/closed)

Description	Ref
1 Pole changeover (for C & D curve only)	B10-A-11

### Busbars

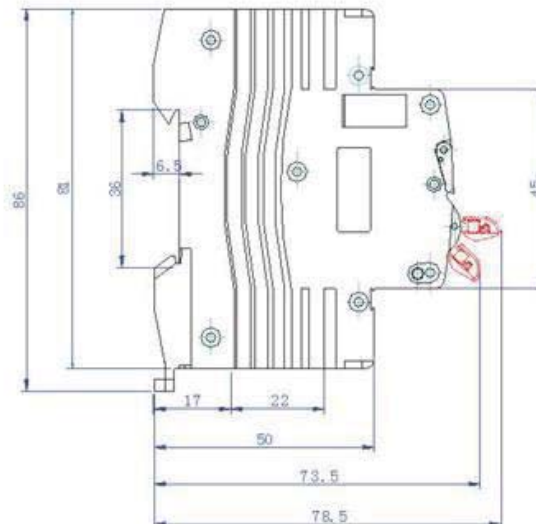
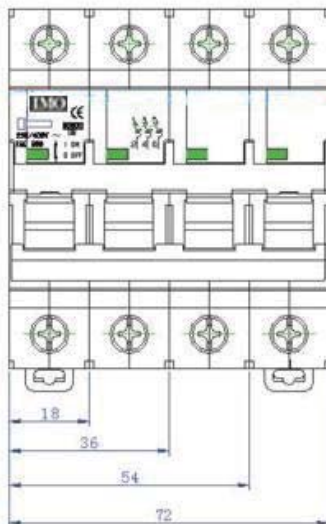
Description	Ref.
Busbar 1 Pole 63A, 1020mm	B6/10-BB-1-063
Busbar 1 Pole 100A, 1020mm	B6/10-BB-1-100
Busbar 3 Pole 63A, 1020mm	B6/10-BB-3-063
Busbar 3 Pole 100A, 1020mm	B6/10-BB-3-100
End cap 1 pole	BC1
End cap 3 pole	BC3
Terminal adapter	BA1

### Locking Device

Description	Ref.
Locking Device	B10-Lock

## Dimensions mm

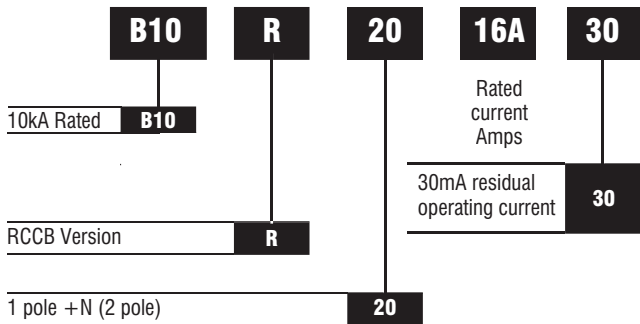
### Miniature Circuit Breakers



# Residual Current Circuit Breakers B10R



## Options and ordering codes



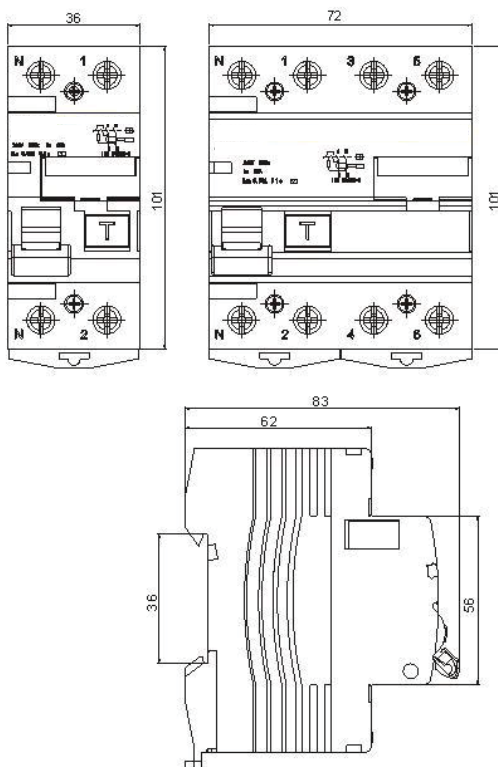
## Specification

Rated voltage: 240/415V AC
Rated residual operating current: 30mA
Terminal capacity: solid conductor 25mm <sup>2</sup>
Mounting: on rails EN60715 (EN50022)
Protection degree: IP20
Electro-mechanical endurance: 4000 cycles

## Selection chart

Type	operating characteristics
Poles	2N
Rated current A mps	16
	25
	32
	40
	63
Weight (g/pc)	206
Packing(Qty)	6

## Overall & Installation Dimensions

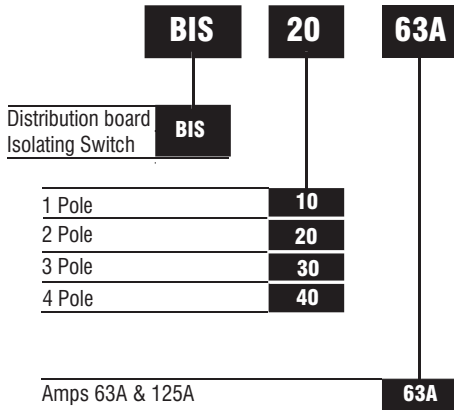


## Wiring Diagram

# Isolating Switch



## Options and ordering codes



## Specification

Rated voltage: 240/415V AC
Rated frequency: 50 / 60Hz
Rated short-circuit making capacity: 6kA
Electro-mechanical endurance: 10000 cycles
Terminal capacity: Solid conductor 35mm <sup>2</sup>

## Selection chart

Stocked Item   
  Please contact IMO

Poles	1	2	3	4
Rated current Amps	63			
	125			
Weight (g/pc)	100	200	300	400
Packing(Qty)	12	6	4	3

## Overall & Installation Dimensions

