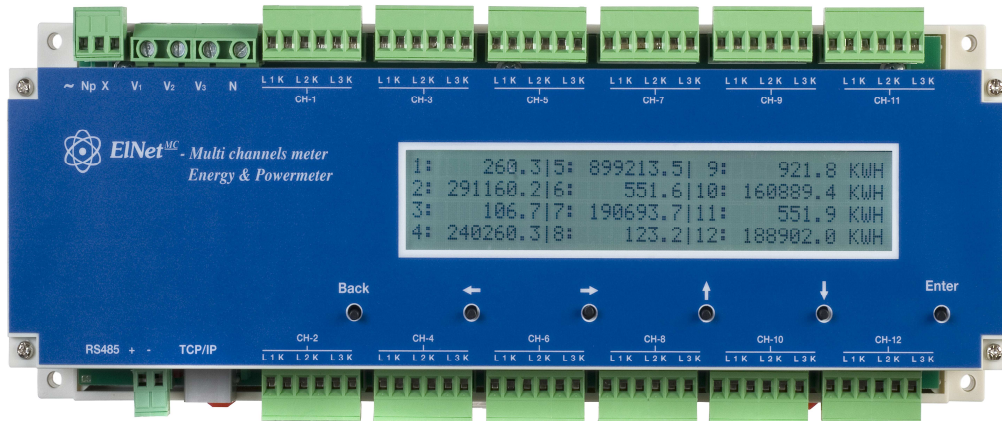


Elnet MC

Energy Powermeter



Installation & Operation Manual

Table of Content

CHAPTER 1 – INTRODUCTION.....	4
1.1. - About the <i>ELNet MC</i> Energy & Powermeter.....	4
1.2. — How to use this manual	5
1.3. — Safety Information.....	6
1.4. — Warranty	7
1.5. — Your comments are welcome	9
1.6. — Disclaimer.....	10
CHAPTER 2 — INSTALLATION.....	11
2.1. — Contents of packaging	11
2.2. — Mechanical Mounting.....	12
2.3. — Wiring Schematics	13
2.4. — Connections	14
CHAPTER 3 — OPERATING <i>ELNet MC</i>	16
3.1. — Front Panel.....	16
3.2. — Control Buttons.....	17
CHAPTER 4 — CONFIGURATION & SETTINGS	19
4.1. — Settings for Current Transformer	20
4.2. — Settings for Voltage Transformer.....	22
4.3. — Time Settings.....	23
4.4. — Date Settings.....	24
CHAPTER 5 — TEXT PANEL DISPLAYS	25
5.1. — Current Displays.....	25

5.2. — Voltage and Frequency Displays	26
5.3. — Active Power (P).....	27
5.3.1. To display 3 phase Total Active Power for all 12 channels:	27
5.3.2. To display Active Power per phase for all 12 channels:	29
5.4. — Reactive Power (Q)	29
5.4.1. To display 3 phase Total Reactive Power for all 12 channels:	29
5.4.2. To display Reactive Power per phase for all 12 channels:	31
5.5. — Apparent Power (S).....	32
5.5.1. To display 3 phase Total Apparent Power for all 12 channels:	32
5.5.2. To display Apparent Power per phase for all 12 channels:	33
5.6. — Overall Power Factor and PF per phase for all 12 channels:	34
5.7 — Energy Displays	35
5.7.1. – Active Energy	35
5.7.2. – Reactive Energy.....	36
5.7.3. – Apparent Energy	36
5.7.4. – TOU Energy.....	37
5.7.4.1. – TOU Energy Per Phase	37
5.7.4.2. – Total (3 phase) TOU Energy	38
CHAPTER 6 — COMMUNICATION.....	40
6.1 — MODBUS Framing	40

6.1.1	— RTU Transmission Mode	40
6.1.2	— The RTU Frame Format	41
6.1.3	— Address Field	42
6.1.4	— Function Field.....	42
6.1.5	— Data Field.....	43
6.1.6	— Check Field	43
6.2	— Registers for ElNet MC Powermeter	43
6.2.1	— Registers addressess.....	45
6.3	— Communication Connections	45
6.4	— Communication Settings	45
6.4.1	— Communication Address.....	46
6.4.2	— Baud Rate	46
6.4.3	— Parity.....	47
6.5	— Serial Communication Set Up.....	47
6.5.1	— To set up the Address:	47
6.5.2	— To set up the Baud Rate:	48
6.5.3	— To set up the Parity:	49
6.5.4	— To set up Stop Bit:	50
6.6	— Ethernet Communication Set UP.....	50
6.6.1	— To set up the IP Address:	50
6.6.2	— To set up the MAC Address:	52
6.6.3	— To set up the Mask:	53
6.6.4	— To set up the GateWay:	53
6.7	— Communication with UniArt Software	54
CHAPTER 7 — SPECIFICATIONS.....		57

CHAPTER 1 — INTRODUCTION

1.1. - About the *ELNet MC* Energy & Powermeter

All large consumers of electricity e.g. Factories, Hotels, Hospitals, Municipalities, need to know the history of their consumption and the quality of the power supply. Details such as Voltage, Current, Power Factor, Hertz, Neutral Current, Energy Demands and all electricity related events are recorded in the ***ELNet*** Energy & Powermeter. These are all recorded on a continual basis and can be recalled and shown on the front panel TEXT display of the instrument with a few simple key-strokes any time the user wishes.

The ***ELNet*** Energy & Powermeter installs onto a standard DIN Rail, and is especially designed to integrate into Building Management Systems.

The Configuration and Setup is menu driven.

Communication with external devices is simple and based on standard known technology.

The ***ELNet*** Energy & Powermeter boasts a new innovative built in “Flash Memory”, which pioneers a new frontier into electrical measurement. It has a 1 MB of ROM with a capacity of recording up to 4 months of energy for each channel.

Each **ELNet** Energy & Power Powermeter is carefully and meticulously manufactured using quality components and the latest production methods. Before leaving the factory each **ELNet** Energy & Powermeter is calibrated and sent to the customer accompanied by the test certificate and Certificate Of Compliance (C.O.C).

1.2. — How to use this manual

We at CONTROL APPLICATIONS Ltd, envisage this manual to be used by three types of people, i.e. the **Installation Technician**, the **Senior Electrical Engineer** and the end **User**. For this reason this manual is divided into chapters for ease of reference by each of these different people. There could be a situation where two of the abovementioned tasks can be combined, or in a rare instance one person could handle all three tasks.

CHAPTER 1, *Introduction*, describes the **ELNet** Energy & Powermeter, its potential users, the readings it can provide and some of its features in brief.

CHAPTER 2, *Installation*, provides detailed instructions for unpacking, mechanical mounting, and electrical wiring up instructions for the **Installation Technician**.

CHAPTER 3, *Operating the ELNet MC*, describes in detail the front Panel, functions of the control buttons.

CHAPTER 4, *CONFIGURATION & SETTINGS* explains in detail the minimum parameters settings needed by the **Senior Electrical Engineer** to set up and configure the **ELNet** Energy & Powermeter.

CHAPTER 5, *Front Panel Displays*, is an easy to follow step-by-step guide to obtain readings, and histories for the *User*.

CHAPTER 6, *Communications* gives details about the Communication capabilities of the **ELNet** Energy & Powermeter, and how to Set Up.

CHAPTER 7, *Specifications*, is a detailed list of specifications of the **ELNet** Energy & Powermeter.

1.3. — Safety Information

The purpose of this manual is to help you. Please read the instructions carefully before performing any installation and note any precautions.

WARNING!

- Ensure that all incoming AC power and other power sources are turned off before performing any work on the **ELNet** Energy & Powermeter. Failure to do so may result in serious or even fatal injury and/or equipment damage.
- If the **ELNet** Energy & Powermeter is damaged in any way do NOT connect it to any power source.
- To prevent a potential fire or shock hazard, never expose the **ELNet** Energy & Powermeter to rain or moisture.

- Keep the surrounding area free of dirt and clutter especially metal objects. Good housekeeping pays.
- Inspect the cables periodically for cracks, kinks or any other signs of wear
- Keep children away.
- Do not pull the cords.
- Users should stay alert and not approach the rear of the **ELNet** Energy & Powermeter while tired or under the influence of alcohol, medicines or any other chemical substance that would tend to make a person drowsy.
- Do not wear loose clothing or dangling jewelry.
- Above all use common sense at all times.

1.4.— Warranty

CONTROL APPLICATIONS Ltd provides a 12- Month warranty against faulty workmanship or components from date of dispatch provided that the product was properly installed and used.

CONTROL APPLICATIONS Ltd does not accept liability for any damage that may be caused by natural disasters (such as floods, fire, earthquake, lightening etc.).

CONTROL APPLICATIONS Ltd does not accept liability for any damage that may be caused by malfunction of the **ELNet** Energy & Powermeter.

CONTROL APPLICATIONS Ltd will advise the customer on the proper installation and use of the **ELNet** Energy & Powermeter, but will not accept any responsibility that the instrument is suitable for the application for which it was originally purchased.

This warranty may become void if the installation, parameter configuration & setting instructions are not carried out according to the instructions set out by CONTROL APPLICATIONS Ltd.

The **ELNet** Energy & Powermeter has no user serviceable parts and should be opened and serviced by a duly qualified authorized representative only. The sensitive electronics could be damaged if exposed to a static environment. This action would void the warranty.

This warranty is limited to the repair and/or replacement at CONTROL APPLICATION Ltd sole discretion of the defective product during the warranty period. Repaired or replaced products are warranted for ninety (90) days from the date of repair or replacement, or for the remainder of the original product's warranty period, whichever is longer.

CONTROL APPLICATIONS Ltd is always at your service to advise the customer on any problem that may be encountered regarding any installation, operation, parameter & configuration settings or maintenance.

1.5. — Your comments are welcome

CONTROL APPLICATIONS Ltd. Sincerely thank you for choosing our **ELNet** Energy & Powermeter. We are confident that it will provide you with many years of trouble free service and give you all the power and energy information and history that you expected from the instrument when you bought it.

While every effort was made to keep the information as reliable, helpful, accurate and up to date as possible, all possible contingencies cannot be covered. Technical or typographical errors could occur, and we would be happy to receive any comments criticisms or notifications of any such errors from you, our valued customer.

Street Address:	24A HaBarzel St. Tel-Aviv 69710 Israel Tel: 972-3-647-4998 Fax: 972-3-647-4598
Electronic Address:	cal@ddc.co.il

1.6.— Disclaimer

Information in this User Manual is subject to change without notice and does not represent a commitment on the part of CONTROL APPLICATIONS Ltd.

CONTROL APPLICATIONS Ltd supplies this User Manual as is without warranty of any kind; either expressed or implied, and reserves the right to make improvements and/or changes in the manual or the product at any time.

While it is the intension of CONTROL APPLICATIONS Ltd to supply the customer with accurate and reliable information in this User Manual, CONTROL APPLICATIONS Ltd assumes no responsibility for its use, or for any infringement of rights of the fourth parties which may result from its use.

This User Manual could contain technical or typographical errors and changes are periodically made to the information herein; these changes may be incorporated in new editions of the publication.

CHAPTER 2 — INSTALLATION

In this Chapter you will find the information and instructions that the *Installation Technician* needs to mount and connect the **ELNet** Energy & Powermeter

WARNING!

- During operation, hazardous voltages are present in connecting cables and terminal blocks.
- Fully qualified personnel must do all work. Failure to follow this rule may result in serious or even fatal injury to personnel and/or damage to equipment.
- Refer to Section 1.3 Safety information before carrying out any installation.
- Read this manual thoroughly and make sure you understand the contents before connecting the **ELNet** Energy & Powermeter to any power source.

2.1.— Contents of packaging

To unpack the **ELNet** Energy & Powermeter:

The **ELNet** Energy & Powermeter is packed and shipped in a carton approximately 32 cm long X 22 cm wide and 7.5 cm high.

Before opening the package, ensure the area is static free clean and dry.

Without using any sharp instruments, carefully open the carton of the **ELNet** Energy & Powermeter.

Please check the contents of the carton, it should contain:

1. Your new **ELNet** MC Energy & Powermeter.
2. **ELNet** MC User Manual. (This book)
3. Test Certificate and Certificate of Compliance. (C.O.C)
4. 12 X six pole connector plugs.
5. 1 X three pole connector plugs.
6. 1 X two pole connector plugs.

2.2.— Mechanical Mounting

NOTE!

Do not mount the **ELNet** Energy & Powermeter too close to any main electrical conductors.

Allow sufficient space to carry out maintenance to the **ELNet** Energy & Powermeter

The **ELNet** Energy & Powermeter is manufactured with a standard DIN rail mounting. To mount, simply choose a suitable location and click into position.

2.3. — Wiring Schematics

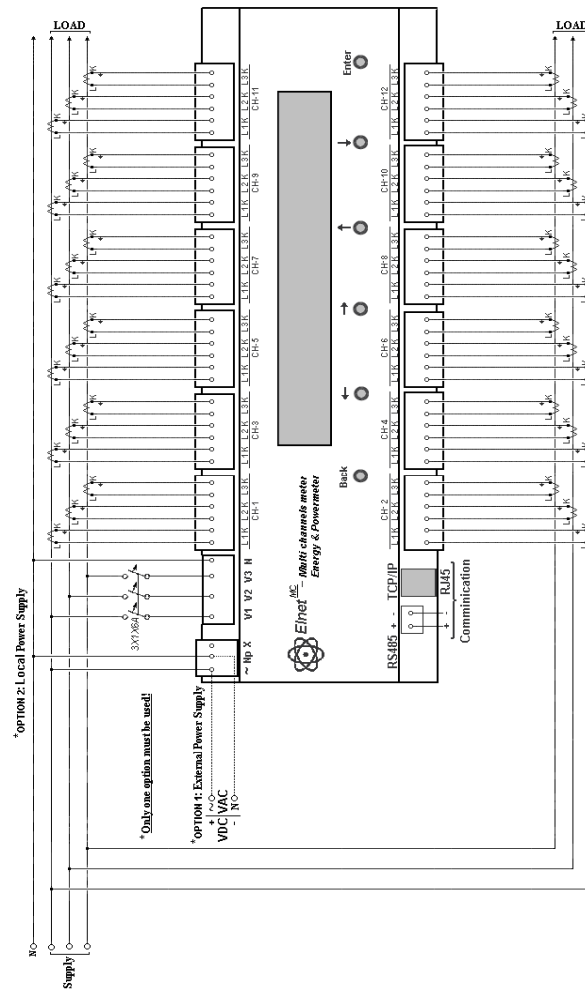


Figure 2.1 Schematic Wiring Diagram

2.4. — Connections

To connect the ***ELNet*** Energy & Powermeter:

All Connections are made via terminal connector plugs (Voltage input, Power Supply, earth/ground etc.).
Recommended maximum tightening torque for the connector screws is 0.5 Nm.

The CT cores of the ***ELNet*** Energy & Powermeter are located internally in the instrument and the lead from the leg of the external Current Transformer must be connected to the correct terminal connector in order to maintain the correct direction.

NOTE!

Ensure all the connections to the leads of the current transformer wiring is secure and there is no mechanical strain on the wire

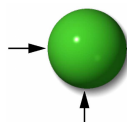
Connect the lead from side “**L**” to the terminal connector L1 at the relevant channel, connect the lead from side “**K**” to the terminal connector K at the same channel, of the ***ELNet*** Energy & Powermeter.

WARNING!

Never allow an open circuit between the two Current Transformers.
An open circuit will cause damage to equipment.

Repeat the procedure for **Line 2** and **Line 3**.

Connect the rest the connections to the ***ELNet*** Energy & Powermeter by means of terminal connector plugs.



Designation	Description	Remarks
V1	Direct from Busbar1	Through a 6Amp fuse
V2	Direct from Busbar2	Through a 6Amp fuse
V3	Direct from Busbar3	Through a 6Amp fuse
N	Direct from Neutral Line	
CH1-CH12 L1K	From Current Transformer on Line1	Note the correct direction to connect the lead
CH1-CH12 L2K	From Current Transformer on Line2	Note the correct direction to connect the lead
CH1-CH12 L3K	From Current Transformer on Line3	Note the correct direction to connect the lead
~	Power 220 V AC	Bridged from measured phase or external AC\DC supply source
Np	Neutral	Bridged from the neutral Line or external AC\DC supply source

Table 2.1 **Front Panel Connections**

CHAPTER 3 — OPERATING EInet MC

In this chapter you will find descriptions and functions of the front panel and the control buttons and how to use them.

3.1. — Front Panel

To operate the front panel:

The Front Panel has a four line Backlight LCD screen and six operating buttons located below the screen.

All readings are shown on the 4 X 40 text screen. How to obtain the readings is explained in detail in Chapter 5.

The Control Buttons and their functions are fully explained in Section 3.2.

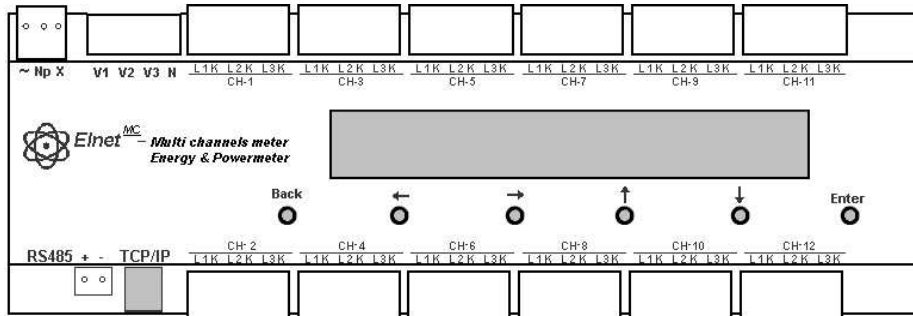


Figure 3.1 Front Panel

To obtain Readings:

All information contained in the Powermeter is viewed by navigating through a logical Hierarchy Menu. To arrive at each reading, follow a logical step-by-step procedure starting from Top Level and progress down to 2nd Level, 3rd Level etc.





3.2.— Control Buttons

Functions of the Control Buttons:

The ***ElNet*** Energy & Powermeter has six control buttons arranged below the display screen. These require slight finger pressure to click. The ***User*** and ***Senior Electrical Engineer*** use these Control Buttons to view readings and perform all the Set Up functions.



Figure 3.2 Control Buttons

- Button "Enter" selects a field to be set or changed. (during Set UP)
- Button  is a spin control that rolls the text down one line per click OR at the highest level, rolls to each reading of that group OR modifies the selected field (during Set UP).
- Button  is a spin control that rolls the text upwards one line per click OR at the lowest level, rolls to each reading of that group OR modifies the selected field (during Set UP).
- Button  is moves the text\cursor left per click.
- Button  is moves the text\cursor right per click.
- Button "Back" returns to the previous step.

NOTE!

In the event of a general power failure, the ***ElNet*** Energy & Powermeter returns to the last screen displayed.

CHAPTER 4 — CONFIGURATION & SETTINGS

In this chapter you will find instructions to set the minimum settings that are necessary to allow the **ELNet** Energy & Powermeter to function properly.

WARNING!

- The selection, installation and settings of the Current Transformer are the most vital and fundamental action required to ensure the accurate functioning of the **ELNet** Energy & Powermeter.
- It is essential to know the ratio of the Current Transformer being installed into the system in order to set the parameter for the Current Transformer correctly.
- All three main current Lines MUST have Current Transformers of the same ratio installed onto them.

4.1. — Settings for Current Transformer

To set or change settings for Current Transformer:

1. From the Main Menu roll to "Setup" and click "Enter".

ELECTRICAL ENERGY	05/01/11
ELECTRICAL METERING	11:19:20
=>SETUP	

Figure 4.1 Main Menu

2. The **Enter Password** screen appears, please insert the password. (The default password is "1")

ENTER PASSWORD FOR TECHNICAL MENU: 0000001 ^

Figure 4.2 Enter Password Screen

3. Roll to "Set Current Transformer" and click "Enter".

SET TIME
SET DATE
=>SET CURRENT TRANSFORMER
SET VOLTAGE TRANSFORMER

Figure 4.3 Technical Menu

The **Current Transformer** screen appears. In this screen you can define each and every channel's current transformer, or by scrolling to the bottom line you can define all at once.

4. In order to define the CT rate of the relevant channel, scroll down to the desirable channel and click "Enter".

=>CURRENT TRANSFORMER (CH-09) :	5
CURRENT TRANSFORMER (CH-10) :	5
CURRENT TRANSFORMER (CH-11) :	5
CURRENT TRANSFORMER (CH-12) :	5

Figure 4.4 Current Transformer Screen

5. The **Set Current Transformer Ratio** screen appears, use the:



buttons to change the value, when finished click "Enter".

CURRENT TRANSFORMER RATIO 5 TO: 0000005 ^

Figure 4.5 Current Transformer Ratio Input Screen

In order to set all the CT rates at once, to one fixed value scroll to "Current Transformer (ALL)" and repeat step 5.

4.2. — Settings for Voltage Transformer

To set or change settings for Voltage Transformer:

1. From the Main Menu roll to "Setup" and click "Enter".

ELECTRICAL ENERGY	05/01/11
ELECTRICAL METERING	11:19:20
=>SETUP	

Figure 4.6 Main Menu

2. The **Enter Password** screen appears, please insert the password. (The default password is "1")

ENTER PASSWORD FOR TECHNICAL MENU: 0000001 ^

Figure 4.7 Enter Password Screen

3. Roll to "Set Voltage Transformer" and click "Enter".

SET TIME
SET DATE
SET CURRENT TRANSFORMER
=>SET VOLTAGE TRANSFORMER

Figure 4.8 Technical Menu

4. Change the ratio of the Voltage Transformer according to the demand, when finished click "Enter".

4.3. — Time Settings

To set Time:

1. Access the "Setup" screen by repeating steps 1-2 from the previous chapter.
2. Roll to "Set Time" and press "Enter".

```
=>SET TIME
   SET DATE
   SET CURRENT TRANSFORMER
   SET VOLTAGE TRANSFORMER
```

Figure 4.9 Technical Menu

The **Set Clock** screen appears:

```
SET CLOCK

17:01:16
^^
```

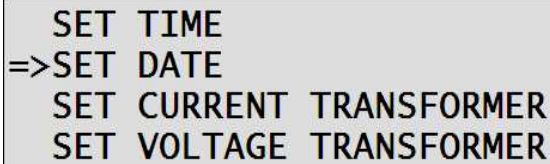
Figure 4.10 Set Clock Screen

3. Use the "Left" , "Right" , "Up" & "Down" buttons to setup the clock, when finished press "Enter".

4.4. — Date Settings

To set Date:

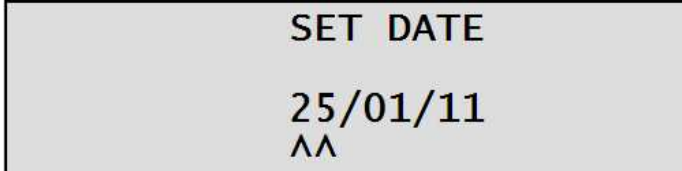
1. Access the "Setup" screen by repeating steps 1-2 from the chapter 4.2.
2. Roll to "Set Date" and press "Enter".



```
SET TIME
=>SET DATE
SET CURRENT TRANSFORMER
SET VOLTAGE TRANSFORMER
```

Figure 4.11 Technical Menu

The **Set Date** screen appears:



```
SET DATE

25/01/11
^^
```

Figure 4.12 Set Date Screen

3. Use the "Left" , "Right" , "Up" & "Down" buttons to setup the Date, when finished press "Enter".

CHAPTER 5 — TEXT PANEL DISPLAYS

In this chapter you will find instructions on how to obtain the readings that the **ELNet** Energy & Powermeter provides, e.g., Current, Voltage Power, Power Factor and Energy.

5.1. — Current Displays

To display Current for all 3 Phases per channel:

1. From the Main Menu roll to "Electrical Metering" and press "Enter".

ELECTRICAL ENERGY	26/01/11
=>ELECTRICAL METERING	14:50:09
SETUP	

Figure 5.1 Main Menu

The **Electrical Metering** screen appears:

2. Roll to "Current" and press "Enter".

=>CURRENT
VOLTAGE AND FREQUENCY
POWER
POWER FACTOR

Figure 5.2 Electrical Metering Screen

The **Current** screen appears:

CH	PHASE 1	PHASE 2	PHASE 3	UNIT
1	5.6	3.6	5.8	AMP
2	11.2	7.3	11.5	AMP
3	16.8	10.9	17.2	AMP

Figure 5.3 **Current Screen**

3. Use the up\down buttons to roll between the channel readings.

5.2. — Voltage and Frequency Displays

To display **Voltage and Frequency for all 3 Phases**:

1. From the Main Menu roll to "Electrical Metering" and press "Enter".

ELECTRICAL ENERGY	26/01/11
=>ELECTRICAL METERING	14:50:09
SETUP	

Figure 5.4 **Main Menu**

The **Electrical Metering** screen appears:

2. Roll to "Voltage And Frequency" and press "Enter".

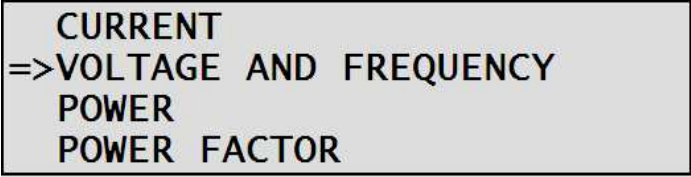


Figure 5.5 Electrical Metering Screen

The **Voltage and Frequency** screen appears:

PHASE 1	PHASE 2	PHASE 3	UNIT
228.0	230.2	230.3	V
396.9	398.9	397.0	V L/L
50.0	50.0	50.0	HRZ.

Figure 5.6 Voltages And Frequency Screen

5.3.— Active Power (P)

5.3.1. To display 3 phase Total Active Power for all 12 channels:

1. From the Main Menu roll to "Electrical Metering" and press "Enter".

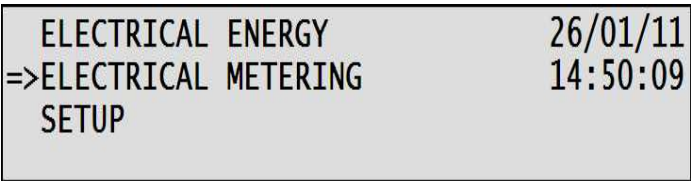


Figure 5.7 Main Menu

The **Electrical Metering** screen appears:

2. Roll to "Power" and press "Enter".

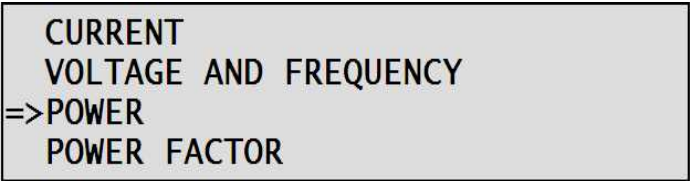


Figure 5.8 **Electrical Metering Screen**

The **Power** screen appears:

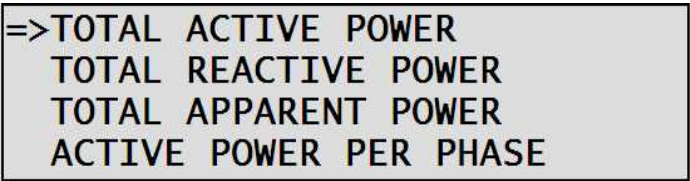


Figure 5.9 **Power Screen**

3. Roll to to "Total Active Power" and press "Enter".

The **Active Power** screen appears:

1:	2.6	5:	13.0	9:	23.4 KW
2:	5.2	6:	3.8	10:	26.0 KW
3:	7.8	7:	18.2	11:	28.6 KW
4:	10.4	8:	20.8	12:	31.2 KW

Figure 5.10 **Active Power Screen**

5.3.2. To display Active Power per phase for all 12 channels:

1. Access the "Power" screen by repeating steps 1-2 from the previous chapter.
2. Roll to "Active Power per Phase" and press "Enter".

TOTAL APPARENT POWER
=>ACTIVE POWER PER PHASE
REACTIVE POWER PER PHASE
APPARENT POWER PER PHASE

Figure 5.11 Power Screen

The **Active Power per Phase** screen appears:

CH	PHASE 1	PHASE 2	PHASE 3	UNIT
1	1002.5	436.1	691.2	KW
2	2005.0	871.9	1378.1	KW
3	3012.1	1310.3	2073.2	KW

Figure 5.12 Active Power per Phase Screen

3. Use the "Up" & "Down" button's to roll between the phases.

5.4. — Reactive Power (Q)

5.4.1. To display 3 phase Total Reactive Power for all 12 channels:

1. From the Main Menu roll to "Electrical Metering" and press "Enter".

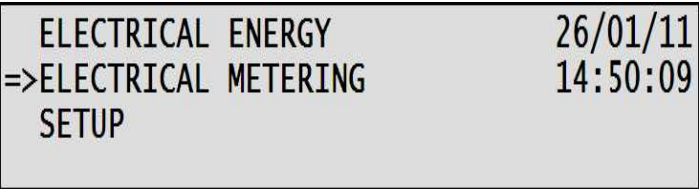


Figure 5.13 Main Menu

The **Electrical Metering** screen appears:

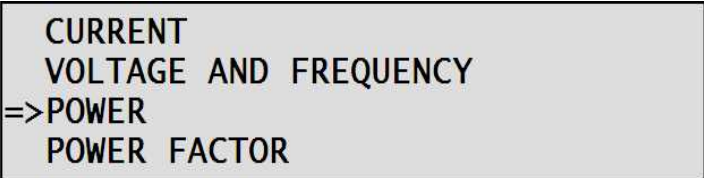


Figure 5.14 Electrical Metering Screen

2. Roll to "Total Reactive Power" and press "Enter".

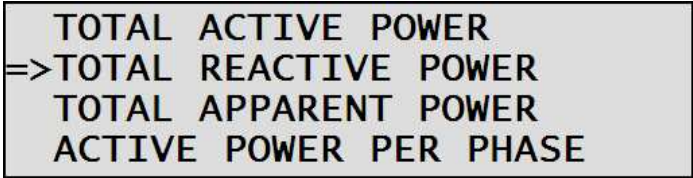


Figure 5.15 Power Screen

The **Total Reactive Power** screen appears:

1:	1.4	5:	7.0	9:	12.6KVR
2:	2.8	6:	3.3	10:	14.2KVR
3:	4.2	7:	9.8	11:	15.5KVR
4:	5.7	8:	11.2	12:	16.9KVR

Figure 5.16 Total Reactive Power Screen

5.4.2. To display Reactive Power per phase for all 12 channels:

1. Access the "Power" screen by repeating steps 1-2 from the previous chapter.
2. Roll to "Reactive Power per Phase" and press "Enter".

TOTAL REACTIVE POWER
 TOTAL APPARENT POWER
 ACTIVE POWER PER PHASE
 => REACTIVE POWER PER PHASE

Figure 5.17 Power Screen

The **Reactive Power per Phase** screen appears:

CH	PHASE 1	PHASE 2	PHASE 3	UNIT
1	288.7	-140.5	-288.6	KVAR
2	584.2	-283.5	-578.5	KVAR
3	866.5	-424.9	-864.7	KVAR

Figure 5.18 Reactive Power per Phase Screen

3. Use the "Up" & "Down" button's to roll between the phases.

5.5. — Apparent Power (S)

5.5.1. To display 3 phase Total Apparent Power for all 12 channels:

1. From the Main Menu roll to "Electrical Metering" and press "Enter".

ELECTRICAL ENERGY	26/01/11
=>ELECTRICAL METERING	14:50:09
SETUP	

Figure 5.19 Main Menu

The **Electrical Metering** screen appears:

CURRENT
VOLTAGE AND FREQUENCY
=>POWER
POWER FACTOR

Figure 5.20 Electrical Metering Screen

2. Roll to "Total Apparent Power" and press "Enter".

TOTAL ACTIVE POWER
TOTAL REACTIVE POWER
=>TOTAL APPARENT POWER
ACTIVE POWER PER PHASE

Figure 5.21 Power Screen

The **Apparent Power** screen appears:

1:	3.4	5:	16.8	9:	30.1KVA
2:	6.7	6:	20.1	10:	33.5KVA
3:	10.0	7:	23.5	11:	36.8KVA
4:	13.4	8:	26.8	12:	40.2KVA

Figure 5.22 **Total Apparent Power Screen**

5.5.2. To display Apparent Power per phase for all 12 channels:

1. Access the "Power" screen by repeating steps 1-2 from the previous chapter.
2. Roll to "Apparent Power per Phase" and press "Enter".

TOTAL APPARENT POWER
ACTIVE POWER PER PHASE
REACTIVE POWER PER PHASE
=>APPARENT POWER PER PHASE

Figure 5.23 **Power Screen**

The **Apparent Power per Phase** screen appears:

CH	PHASE 1	PHASE 2	PHASE 3	UNIT
1	1089.8	524.1	630.5	KVA
2	2180.5	1048.1	1258.7	KVA
3	3272.6	1572.2	1888.9	KVA

Figure 5.24 **Apparent Power per Phase Screen**

3. Use the "Up" & "Down" button's to roll between the phases.

5.6. — Overall Power Factor and PF per phase for all 12 channels:

To display the Power Factor for all 3 Phases:

1. From the Main Menu roll to "Electrical Metering" and press "Enter".

ELECTRICAL ENERGY	26/01/11
=>ELECTRICAL METERING	14:50:09
SETUP	

Figure 5.25 Total Reactive Power Screen

The **Electrical Metering** screen appears:

CURRENT
VOLTAGE AND FREQUENCY
POWER
=>POWER FACTOR

Figure 5.26 Electrical Metering Screen

2. Roll to "Power Factor" and press "Enter".

The **Power Factor** screen appears:

CH	PHASE 1	PHASE 2	PHASE 3	UNIT
1	1.0	0.9	1.0	PF
2	1.0	0.9	1.0	PF
3	1.0	0.9	1.0	PF

Figure 5.27 Power Factor per Phase Screen

3. Use the "Up" & "Down" button's to roll between the phases.

5.7 — Energy Displays

The Elnet MC Energy & Powermeter provides up to 36 submeters with separate measurement and energy registers. Each submeter can service current inputs dedicated to a particular consumer (metering submeter) or be used as a totalization meter or automatic totalization of energy from different sub-consumers.

5.7.1. – Active Energy

To display totalize Active Energy for all 12 channels:

1. From the Main Menu scroll to Electrical Energy.
2. Press the Enter Button.
3. Scroll to Active Energy.
4. Press the Enter button.

The **Active Energy** screen appears:

1:	554.8	5:	6980.5	9:	12798.2	KWH
2:	8094.8	6:	9159.8	10:	13460.5	KWH
3:	7981.3	7:	11480.2	11:	14147.8	KWH
4:	2214.7	8:	12137.0	12:	6638.3	KWH

Figure 5.28 **Active Energy** Screen

In this screen you can see the totalized Active Energy for each Channel.

5.7.2. – Reactive Energy

To display totalize Reactive Energy for all 12 channels:

1. From the Main Menu scroll to Electrical Energy
2. Press the Enter Button
3. Scroll to Reactive Energy
4. Press the Enter button

The **Reactive Energy** screen appears:

1:	81.1	5:	1357.4	9:	1833.9KVRH
2:	1167.2	6:	1233.7	10:	1933.4KVRH
3:	1265.1	7:	1654.3	11:	2029.1KVRH
4:	325.4	8:	1745.6	12:	970.3KVRH

Figure 5.29 **Reactive Energy Screen**

In this screen you can see the totalized Reactive Energy for each Channel.

5.7.3. – Apparent Energy

To display totalize Apparent Energy for all 12 channels:

1. From the Main Menu scroll to Electrical Energy.
2. Press the Enter Button.
3. Scroll to Apparent Energy.
4. Press the Enter button.

The **Apparent Energy** screen appears:

1:	554.8	5:	6980.5	9:	12798.2 KVAH
2:	8094.8	6:	9159.8	10:	13460.5 KVAH
3:	7981.3	7:	11480.2	11:	14147.8 KVAH
4:	2214.7	8:	12137.0	12:	6638.3 KVAH

Figure 5.30 **Apparent Energy Screen**

In this screen you can see the totalized Apparent Energy for each Channel.

5.7.4. – TOU Energy

Elnet MC Energy & Powermeter provides you the ability to see the information about the energy by TOU for each channel in detail (by phase) and the summarize value of each channel.

5.7.4.1. – TOU Energy Per Phase

To display Active TOU Energy per phase:

1. From the Main Menu scroll to Electrical Energy.
2. Press the Enter Button.
3. Scroll to TOU Energy.
4. Press the Enter button.
5. Scroll to Active TOU Energy per Phase.
6. Press the Enter Button.

The **Active TOU Energy per phase** screen appears:

CH		LOW	MEDIUM	HIGH	UNIT
4	L1	598.5	82.8	220.1	KWH
	L2	343.9	32.2	108.9	KWH
	L3	616.1	50.3	174.8	KWH

Figure 5.31 **Active TOU Energy per phase**

This screen displays the TOU Active energy per phase for the selected channel. To scroll through the channels use the UP/DOWN buttons.

To display Reactive or Apparent TOU Energy per phase please repeat steps 1-4 and choose "Reactive TOU Energy per phase" or "Apparent TOU energy per phase".

5.7.4.2. – Total (3 phase) TOU Energy

To display Total 3 Phase Active TOU Energy:

1. From the Main Menu scroll to Electrical Energy.
2. Press the Enter Button.
3. Scroll to TOU Energy.
4. Press the Enter button.
5. Scroll to Total 3 Phase Active TOU Energy.
6. Press the Enter Button.

The **Total 3 Phase Active TOU Energy** screen appears:

CH	LOW	MEDIUM	HIGH	UNIT
1	389.9	41.6	132.1	KWH
2	2761.9	509.7	4840.8	KWH
3	2444.6	559.9	5003.2	KWH

Figure 5.32 **Total 3 Phase Active TOU Energy**

This screen displays the Total 3 Phase Active TOU Energy for the selected channels (3 channels at one screen). To scroll through the channels use the UP/DOWN buttons.

To display Reactive or Apparent Total 3 Phase Active TOU Energy please repeat steps 1-4 and choose "Total 3 Phase Reactive TOU Energy" or "Total 3 Phase Apparent TOU Energy".

CHAPTER 6 — COMMUNICATION

MODBUS Protocol:

The ***Elnet MC*** Energy & Powermeter has a serial and TCP/IP interface ports, allowing direct interface with an external communication network supporting the MODBUS Protocol.

MODBUS is an Industry Standard, widely known and commonly used communications protocol. Using MODBUS provides communication between a PC and up to 247 Powermeter slaves on a common line - the PC being the **master** and the powermeters the **slaves**. The PC initiates the transaction (either a query or broadcast) and the Powermeter/s responds. Powermeters respond to the **master** PC's request, but will not initiate any transmission on its own. The PC sends a single Query transaction and the Powermeter responds in a single response frame and is capable of only one query and one response at a time.

6.1 — MODBUS Framing

6.1.1 — RTU Transmission Mode

MODBUS uses the standard Remote Terminal Unit (RTU) transmission mode. RTU mode sends data in 8-bit binary EVEN parity or 8-bit binary NO parity data format. For the ***Elnet MC*** Energy & Powermeter to successfully communicate, choose one in the communication Set Up.

Field	No. of bits
Start bit	1
Data bits	8
Parity	1
Stop it	1

Table 6.1 **RTU Data Format**

6.1.2 — The RTU Frame Format

Query and response information is sent in frames. Each frame contains:

Address

Function (See Section 6.1.4 for descriptions of functions),

Data

Check

Address	Function	Data	Check
8 bits	8 bits	N * 8 bits	16 bits

Table 6.2 **R T U Message Frame Format**

If the receiving device (Powermeter) detects a time laps of five characters, then it will assume the message is incomplete and will flush the frame. The device then assumes that the next byte received will be an address. The maximum query and response message length is 256 bytes including check characters.

6.1.3 — Address Field

Each Powermeter is designated in a network system by a user assigned address. The Address can be any number between 1 and 247. The Powermeter will only respond to its own specifically assigned address.

6.1.4 — Function Field

The function field contains the code that tells the Powermeter what action to perform.

The **ElNet MC** Energy & Powermeter uses and responds to four standard Message Format Functions.

Function 03

Function 04

Function 06

Function 16

Function	Meaning in MODBUS	Action
Function 03	Read holding register	Obtain data from Powermeter (Read register)
Function 04	Read input register	Obtain data from Powermeter (Read register)
Function 06	Preset single register	Transmit data to Powermeter (Write single register)
Function 16	Preset multiple register	Transmit data to Powermeter (Write multiple register)

Table 6.3 **Function Codes**

6.1.5 — Data Field

The Data field contains the body of the message and contains instructions from the PC **master** to the Powermeter **slave** to perform a particular action or respond to a query. The reply message from the Powermeter will be information contained in one or more of its registers.

6.1.6 — Check Field

The error check field contains the result of Cyclical Redundancy Check (CRC). The start of the message is ignored in calculating the CRC.

For more detailed information on CRC, refer to the MODBUS Protocol Reference Guide.

6.2— Registers for ElNet MC Powermeter

The **ElNet MC** Energy & Powermeter is capable of supporting either Function 03 or Function 04 Message Format (see Table 6-3). In a reply to a query from the PC **master** for a reading from a particular field, the response from the Powermeter can be either in Format 03 or Format 04 but will depend on which Format the query was originally sent.

The difference is significant because by using Function 03 the ElNet Pico will only send the INTERGER part of the field value requested and the PC **master** will only display the INTERGER part of the field value.

Function 04, on the other hand, is capable of sending two separate halves of the full FLOAT requested information (each half contained in a separate register). Then it is the task of the PC **master** to merge the two halves into a full FLOAT reply (For more detailed information See IEEE Standard 754 Floating-Point).

E.G. 1 If the user's PC **master** supports Function 03, then the reply will contain the INTERGER part of the field only.

The PC **master** requests the Voltage from Line1, and the actual Voltage in that field is 230.5 Volts.

Function 03 will respond with the INTEGER only i.e. 230V.

E.G. 2 If the user PC **master** supports Function 04, then the reply will contain the information stored in the two registers assigned to that field and will contain the full, accurate reply.

The PC master requests the Voltage from Line1, and the actual Voltage in that field is 230.5 Volts.

Function 04 will respond with a composite reply of both register 1 and 2 giving the full FLOAT value (in IEEE Format) from that field i.e. 230.5V.

6.2.1 — Registers addresses

The **ElNet MC** MODBUS registers addresses are updated all the time and can be downloaded from the following web site:

http://www.ddc.co.il/elnet-pdf/elnet_comm.pdf

The MODBUS registers addresses numbering order specify at the above mentioned web address set as a defaults but can be changed in order to be fit to the SCADA/HMI drivers.

6.3— Communication Connections

The ElNet MC Energy & Powermeter supports RS-485 communication. Connections are provided on the bottom front terminal of the device. (Please refer to section 2.4) and are made by means of the connectors provided.

6.4— Communication Settings

To enable the *User* to connect the ElNet MC Energy & Powermeter to a PC computer for successful communications, the Communication Setup parameters of both must match; i.e. the port of the PC and the configuration settings of the Power meter.

Address
Baud Rate
Parity

6.4.1 — Communication Address

Each Power meter in a communication system must have its own unique address.

Because the **ELNet MC** Energy & Powermeter works on MODBUS, the available addresses are - from '1' to '247'.

6.4.2 — Baud Rate

The Baud Rate is the communication speed in Bits per second (BPS) that the **ELNet MC** Energy & Powermeter communicates with the PC. The better the communication line Quality, the faster the communications may be.

If the communication line is routed through a “noisy” environment, it may be necessary to decrease the Baud Rate.

Available Baud Rates for the **ELNet MC** Energy & Powermeter:

300	bps
600	bps
1200	bps
2400	bps
4800	bps
9600	bps
19200	bps
38400	bps

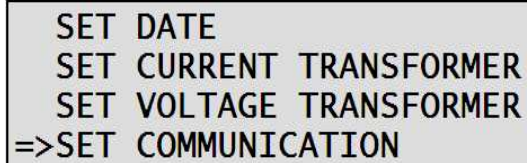
6.4.3 — Parity

The choices of parity are either NONE or EVEN (see Section 6.1.1 for description of Parity).

6.5— Serial Communication Set Up

6.5.1 — To set up the Address:

1. Access the "Setup" screen as explained in previous chapters. Look at chapter 4.1, steps 1-2.
2. Roll to "Set Communication" and press "Enter".



```
SET DATE
SET CURRENT TRANSFORMER
SET VOLTAGE TRANSFORMER
=>SET COMMUNICATION
```

Figure 6.1 Technical Screen

The **Communication** screen appears:



```
=>SERIAL COMMUNICATION
ETHERNET COMMUNICATION
```

Figure 6.2 Communication Screen

3. Roll to "Serial Communication" and press "Enter".

The **Serial Communication** screen appears:

```
BAUD RATE (57600)
PARITY     (EVEN)
=>ADDRESS  ( 5)
STOP BIT   (1)
```

Figure 6.3 **Serial Communication Screen**

4. Roll to "Address" and press "Enter".

The **Address** screen appears:

```
SERIAL CONFIGURATION
ENTER UNIT ADDRESS:
      0000005
      ^
```

Figure 6.4 **Address Input Screen**

5. Use the "Up", "Down", "Left" & "Right" buttons to change the Address, when finished press "Enter".

6.5.2 — To set up the Baud Rate:

1. Access the "Serial Communication" screen by repeating steps 1-3 as explained in chapter **6.5.1**.
2. Roll to "Baud Rate" and press "Enter".

```
=>BAUD RATE (57600)
PARITY      (EVEN)
ADDRESS     ( 5)
STOP BIT    (1)
```

Figure 6.5 **Serial Communication Screen**

The **Baud Rate** screen appears:

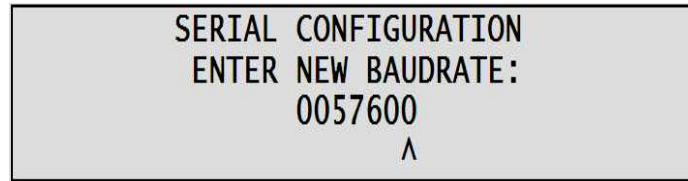


Figure 6.6 **Baud Rate Input Screen**

3. Use the "Up", "Down", "Left" & "Right" buttons to change the Baud Rate, when finished press "Enter".

6.5.3 — To set up the Parity:

1. Access the "Serial Communication" screen by repeating steps 1-3 as explained in chapter **6.5.1**.
2. Roll to "Parity" and press "Enter".

The **Parity** screen appears:

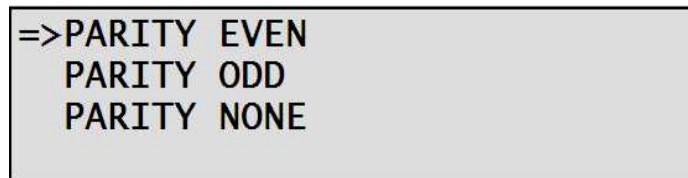


Figure 6.7 **Parity Screen**

3. Use "Up" & "Down" buttons to choose the Parity and press "Enter".

6.5.4 — To set up Stop Bit:

1. Access the "Serial Communication" screen by repeating steps 1-3 as explained in chapter **6.5.1**.
2. Roll to "Stop Bit" and press "Enter".

The **Stop Bit** screen appears:

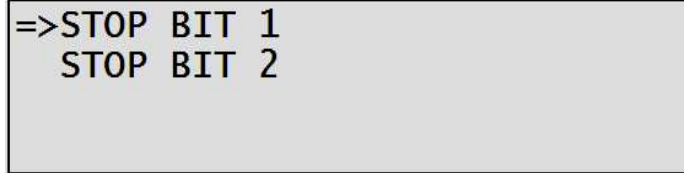


Figure 6.8 **Serial Communication Screen**

Use "Up" & "Down" buttons to choose the Stop Bit and press "Enter".

NOTE!

When the selection is made it takes immediate affect with no further action required.

6.6— Ethernet Communication Set UP.

6.6.1 — To set up the IP Address:

1. Access the "Setup" screen as explained in previous chapters. Look at chapter **4.1**, steps **1-2**.

2. Roll to "Set Communication" and press "Enter".

```
SET DATE
SET CURRENT TRANSFORMER
SET VOLTAGE TRANSFORMER
=>SET COMMUNICATION
```

Figure 6.9 **Technical Screen**

The **Communication** screen appears:

```
SERIAL COMMUNICATION
=>ETHERNET COMMUNICATION
```

Figure 6.10 **Communication Screen**

3. Roll to "Ethernet Communication" and press "Enter".

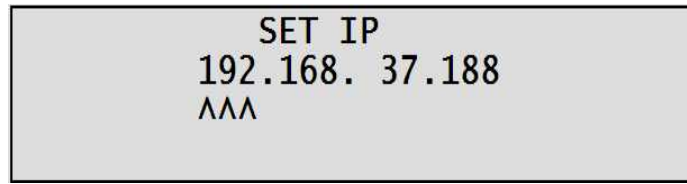
The **Ethernet Communication** screen appears:

```
=>TCP-IP ADDRESS
TCP-MAC ADDRESS
TCP-MASK
TCP-GATEWAY
```

Figure 6.11 **Ethernet Communication Screen**

4. Roll to "TCP-IP Address" and press "Enter".

The **Set IP Address** screen appears:



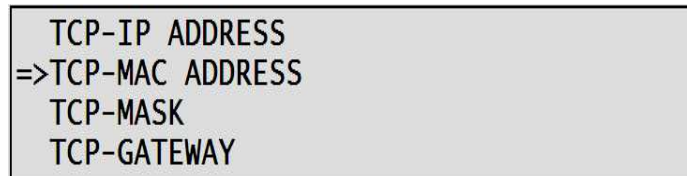
```
SET IP
192.168. 37.188
255.255.255.0
```

Figure 6.12 **Set IP Screen**

5. Use the "Up", "Down", "Left" & "Right" buttons to change the IP address, when finished press "Enter".

6.6.2 — To set up the MAC Address:

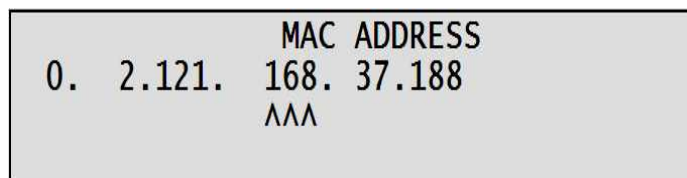
1. Access the "Ethernet Communication" screen by repeating steps 1-3 as explained in chapter **6.6.1**
2. Roll to "TCP-Mac" Address and press "Enter".



```
TCP-IP ADDRESS
=>TCP-MAC ADDRESS
TCP-MASK
TCP-GATEWAY
```

Figure 6.13 **Ethernet Communication Screen**

The **Mac Address** screen appears:



```
MAC ADDRESS
0. 2.121. 168. 37.188
255.255.255.0
```

Figure 6.14 **Mac Address Input Screen**

3. Use the "Up", "Down", "Left" & "Right" buttons to change the Mac Address (3 last sets of digits only), when finished press "Enter".

6.6.3 — To set up the Mask:

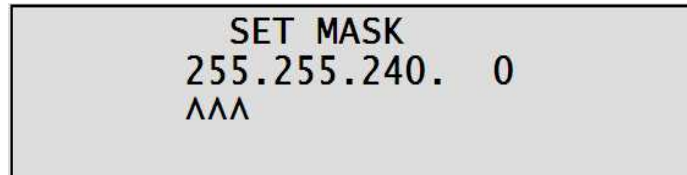
1. Access the "Ethernet Communication" screen by repeating steps 1-3 as explained in chapter 6.6.1
2. Roll to "TCP-Mask" and press "Enter".



```
TCP-IP ADDRESS
TCP-MAC ADDRESS
=>TCP-MASK
TCP-GATEWAY
```

Figure 6.15 Ethernet Communication Screen

The **Set Mask** screen appears:



```
SET MASK
255.255.240. 0
^^^
```

Figure 6.16 Mask Address Input Screen

3. Use the "Up", "Down", "Left" & "Right" buttons to change the Mask, when finished press "Enter".

6.6.4 — To set up the GateWay:

1. Access the "Ethernet Communication" screen by repeating steps 1-3 as explained in chapter 6.6.1

2. Roll to "TCP – Gateway" and press "Enter".

```
TCP-IP ADDRESS
TCP-MAC ADDRESS
TCP-MASK
=>TCP-GATEWAY
```

Figure 6.17 Ethernet Communication Screen

The **Gateway** screen appears:

```
SET GATEWAY
192.168. 33.254
^^^
```

Figure 6.18 Gateway Input Screen

3. Use the "Up", "Down", "Left" & "Right" buttons to change the Gateway, when finished press "Enter".

6.7— Communication with UniArt Software

CONTROL APPLICATIONS Ltd propriety software, "UniArt" is used to **Read** and **Write** Registers of the **ELNet MC** Energy & Powermeter. Each Item number in the Registers Table is a unique field containing information. The UniArt software manages each Item number as a parameter. Refer to the UniArt manual how to set up parameters.

To read fields using UniArt:

1. Find the reading required in the MODBUS Registers Table.
2. Note the Item Number from the Registers Table.
3. Go to the correct File number.

Since File capacity in UniArt is limited to 128 parameters, the information contained in the ElNet Pico fields is stored in several files.

File number is determined by the Item number

File # 0 contains Item number 1 - 128

File # 1 contains Item number 129 – 256

File # 2 contains Item number 257 – 384

File # 3 contains Item number 385 – 512

Go to the correct Point number within that file

Point number is determined by the formula:

Item number – [FILE X 128] = Point Number

E.G. 1 If the user wishes to read Voltage Line 2 (Item No 2)

By applying the formula: $2 - [0 \times 128] = 2$

File = 0 and Point within that file = 2

E.G. 2 If the user wishes to read 30th Harmonics for Volts Line1 (Item No 330)

By applying the formula: $330 - [2 \times 128] = 74$

File = 2 and Point within that file = 74

E.G. 3 If the user wishes to read 7th Harmonic for Current Line 3 (Item No 467)

By applying the formula: $467 - [3 \times 128] = 83$

File = 3 and Point number within that file = 83

More Examples:

E.G. No	Item No	Field Description	File	Point
1	2	Voltage Line 2	0	2
2	330	30 th Harmonics for Volts Line1	2	74
3	467	7 th Harmonic for Current Line 3	3	83
4	128		0	128
5	129		1	1
6	256		1	128
7	257		2	1
8	384	20 th Harmonics for Volts Line 3	2	128
9	385	21 st Harmonics for Volts Line3	3	1

Table 6.4 Function Codes

CHAPTER 7 — SPECIFICATIONS

Item	Description
Power requirements	85-250VAC, 60/50 Hz, 60VA
Dimensions	(HxWxD) 110x300x60 mm
Shipping Weight	1,250 gr
Voltage limits	1000VAC
Current limits	20A
Enclosure material	ABS + Antiflame
Display	Liquid Crystal 4 X 40
Operating temperature	-20 - + 60 C
Storage temperature	-20 - + 80 C
Humidity	0- 90 RH%
Voltage input terminals	VL – E10 1708
Communication port	RS485, Ethernet TCP/IP
Mounting	Standard DIN Rail
Digital Inputs (optional)	Dry contact

All technical specifications are subject to change without notice.