



**Innenverbinder**

**Inner Connector**

**NEU  
NEW**

**Beschreibung** Zinkdruckguss zur Verbindung von zwei Aluminiumprofilen, Montage ohne Profilbearbeitung

**Material** Innenverbinder: Zinkdruckguss, verzinkt  
Gewindestifte: Stahl, verzinkt

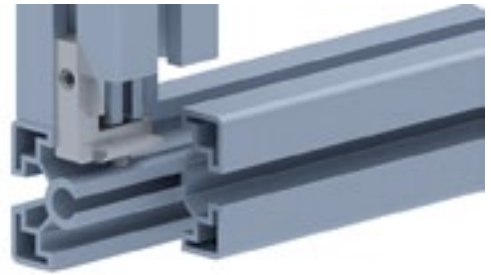
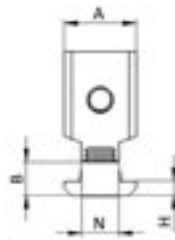
**Liefereinheit** 10 Stück

*Die-Cast Zinc*

**Description** To connect two aluminum profiles, assembly without machining

**Material** Inner Connector: Zinc-plated die-cast zinc  
Hexagon socket set screws: Zinc-plated steel

**Pack Quantity** 10 pieces



Innenverbinder <i>Inner Connector</i>	N [mm]	A [mm]	B [mm]	H [mm]	L1 [mm]	L2 [mm]	Gewindestift <i>Hexagon socket set screw</i>	Gewicht [g] <i>Weight [g]</i>		Teil-Nr. <i>Part #</i>
	8	15.8	7.8	6.0	21.0	30.0	M6	24.0	<b>B</b>	<a href="#">099I9008</a>
	10	19.0	8.8	3.8	32.0	38.0	M8	44.0	<b>B</b>	<a href="#">099I9010</a>