



Zentralverbinder

Central Connector

Beschreibung Stahl zur rechtwinkligen Verbindung von zwei Aluminiumprofilen; zur Montage muss ein Sack- oder Durchgangsloch in eines der Profile gebohrt werden

Material Stahl

Oberfläche verzinkt

Liefereinheit 10 Stück

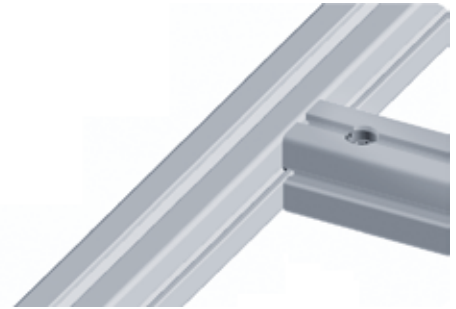
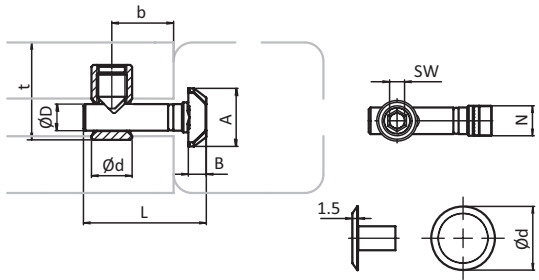
Steel

Description To connect two aluminum profiles at right angles; a blind or through hole must be drilled through one of the profiles to provide access to the tightening screw

Material Steel

Surface Zinc plated

Pack Quantity 10 pieces



Ausführung Version	N	A [mm]	B [mm]	b [mm]	d [mm]	t [mm]	D [mm]	L [mm]	SW [mm]	Gewicht [g] Weight [g]		Teil-Nr. Part #
0°	8	15.5	5.0	18.0	Ø11	22.0	7.0	33.0	4	21.0	B	099B08110700
90°	8	15.5	5.0	18.0	Ø11	22.0	7.0	33.0	4	20.0	B	099B08110790
0°	8 / 10	19.5	5.5	18.0	Ø11	22.0	7.0	40.0	4	26.0	B	099B08110700S01
90°	8 / 10	19.5	5.5	18.0	Ø11	22.0	7.0	40.0	4	26.0	B	099B08110790S01
0°	10	19.5	5.5	22.5	Ø17	31.0 *(1) 34.0 *(2) 36.0 *(3) 41.0 *(4)	9.7	45.5	6	56.0	B	099B10171000
90°	10	19.5	5.5	22.5	Ø17	31.0 *(1) 34.0 *(2) 36.0 *(3) 41.0 *(4)	9.7	45.5	6	56.0	B	099B10171090
Abdeckkappe Cover Cap	10 *(1) *(2)	-	-	-	Ø17	-	-	-	-	0.6	B	091107
	10 *(3)	-	-	-	Ø17	-	-	-	-	0.6	B	091108

* (1) = Profil 40; (2) = Profil 45; (3) = Profil 50; (4) = Profil 60

* (1) = profile 40; (2) = profile 45; (3) = profile 50; (4) = profile 60

