



## Gewindeplatte

## Threaded Plate

**Beschreibung** individuelle Maße, ein oder mehrere Gewinde  
 für jede Befestigung mittels Schraube

**Material** Stahl, verzinkt

**Maße** L x B x H

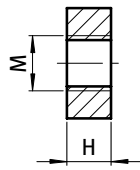
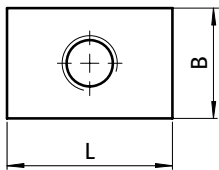
**Liefereinheit** 100 Stück

**Description** *Customized Dimensions, One or Several Threads*  
 To fasten components with a screw

**Material** *Zinc plated steel*

**Dimensions** *L x B x H*

**Pack Quantity** *100 pieces*



### Gewindeplatte Threaded Plate

### Maße L x B x H [mm] Dimensions L x B x H [mm]

### Gewinde Thread

### Teil-Nr. Part #

Maße L x B x H [mm] Dimensions L x B x H [mm]	Gewinde Thread	Teil-Nr. Part #
9 x 9 x 3	M4	096P0090903M4
9 x 9 x 3	M5	096P0090903M5
9 x 9 x 3	M6	096P0090903M6
14 x 9 x 2.5	M4	096P01409025M4
14 x 9 x 2.5	M5	096P01409025M5
15 x 10 x 4	M5	096P0151004M5
15 x 10 x 4	M6	096P0151004M6
15 x 10 x 5	M6	096P0151005M6
19 x 16 x 4	M4	I 096P0191604M4
19 x 16 x 4	M5	I 096P0191604M5
19 x 16 x 4	M6	I 096P0191604M6
19 x 16 x 4	M8	I 096P0191604M8
19 x 19 x 4	M4	096P0191904M4
19 x 19 x 4	M5	096P0191904M5
19 x 19 x 4	M6	096P0191904M6
19 x 19 x 4	M8	096P0191904M8
20 x 13 x 5	M6	096P0201305M6
20 x 13 x 5	M8	096P0201305M8
20 x 14 x 6	M8	096P0201406M8
20 x 18 x 6	M8	096P0201806M8
20 x 20 x 4	M4	B 096P0202004M4
20 x 20 x 6	M5	B 096P0202006M5
20 x 20 x 6	M6	B 096P0202006M6
20 x 20 x 6	M8	B 096P0202006M8
22 x 15 x 5	M6	096P0221505M6
25 x 12 x 5	M6	096P0251205M6
30 x 18 x 8	M8	096P0301808M8
30 x 20 x 6	M10	096P0302006M10
30 x 25 x 5	M8	096P0302505M8
30 x 25 x 6	M8	096P0302506M8
32 x 30 x 8	M8	096P0323008M8
35 x 30 x 5	M6	096P0353005M6
43 x 43 x 5	M8	096P0434305M8