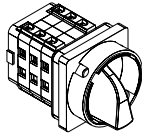


Mando estándar
Standard Handle



Mando bloqueable
Padlockable Handle

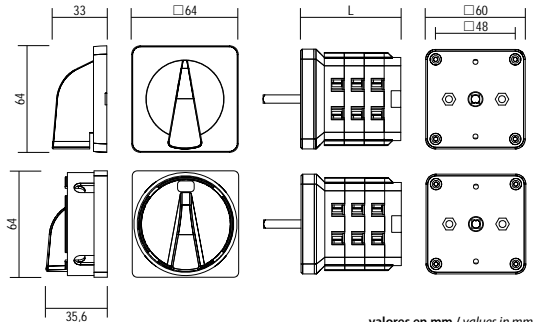
Intensidad / rating	25-40A
terminal	M5
hilo rígido / stranded wire	6 - 25 mm ²
hilo flexible / flexible wire	6 - 16 mm ²



Reapretar **todos** los tornillos del embornado durante la instalación
Retighten **all** connection screws during installation



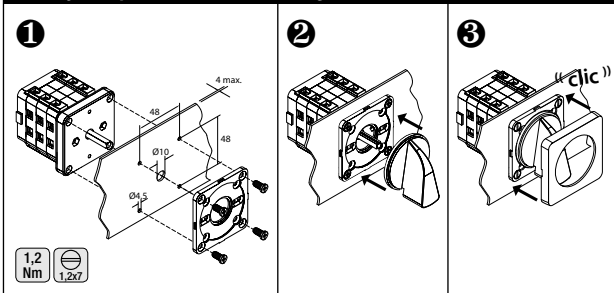
Dimensiones / Dimensions



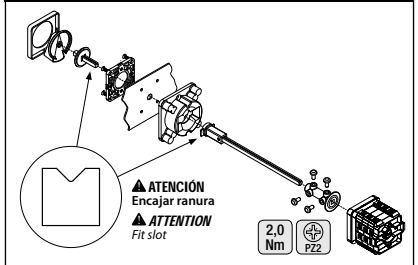
valores en mm / values in mm

pisos/cells	1	2	3	4	5	6	7	8	9	10	11	12
L	36,3	48,3	60,3	72,3	84,3	96,3	108,3	120,3	132,3	144,3	156,3	168,3

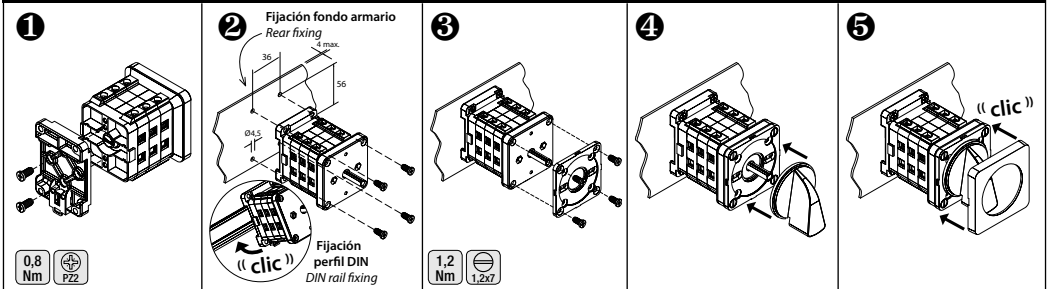
Montaje empstrar / Front mounting



Embrague, enclavamiento y eje prolongado Prolonged shaft and interlock



Montaje perfil DIN o fondo armario / DIN rail or rear mounting



⚠ PELIGRO / DANGER

TENSIÓN PELIGROSA Únicamente el personal de mantenimiento eléctrico especializado deberá instalar y prestar servicios de mantenimiento a este equipo. Cortar la alimentación del equipo antes de realizar cualquier trabajo en él. Utilice siempre un dispositivo detector de tensión adecuado para confirmar la falta de tensión en el equipo. Vuelva a colocar todos los dispositivos, las puertas y las cubiertas antes de poner el equipo en tensión. El incumplimiento de estas precauciones podrá causar la muerte o lesiones graves.

HAZARDOUS VOLTAGE This equipment must be installed and serviced only by qualified electrical personnel. Turn off all power supplying this equipment before working on or inside equipment. Always use a properly rated voltage sensing device to confirm power is off. Replace all devices, doors, and covers before turning on power to this equipment. Failure to follow these instructions will result in death or serious injury.

Interruptores / Switches

<p>550 unipolar / single pole</p> <table border="1" data-bbox="162 1396 207 1476"> <tr><td>1</td><td>2</td><td>X</td></tr> <tr><td>1</td><td>2</td><td>X</td></tr> <tr><td>0</td><td>1</td><td></td></tr> </table> <p>550</p>	1	2	X	1	2	X	0	1		<p>551 bipolar / double pole</p> <table border="1" data-bbox="162 1069 207 1149"> <tr><td>3</td><td>4</td><td>X</td></tr> <tr><td>1</td><td>2</td><td>X</td></tr> <tr><td>0</td><td>1</td><td></td></tr> </table> <p>551</p>	3	4	X	1	2	X	0	1		<p>552 tripolar / triple pole</p> <table border="1" data-bbox="162 726 207 805"> <tr><td>5</td><td>6</td><td>X</td></tr> <tr><td>3</td><td>4</td><td>X</td></tr> <tr><td>1</td><td>2</td><td>X</td></tr> <tr><td>0</td><td>1</td><td></td></tr> </table> <p>552</p>	5	6	X	3	4	X	1	2	X	0	1		<p>553 tetrapolar / 4 pole</p> <table border="1" data-bbox="162 399 240 478"> <tr><td>7</td><td>8</td><td>X</td></tr> <tr><td>5</td><td>6</td><td>X</td></tr> <tr><td>3</td><td>4</td><td>X</td></tr> <tr><td>1</td><td>2</td><td>X</td></tr> <tr><td>0</td><td>1</td><td></td></tr> </table> <p>553</p>	7	8	X	5	6	X	3	4	X	1	2	X	0	1	
1	2	X																																														
1	2	X																																														
0	1																																															
3	4	X																																														
1	2	X																																														
0	1																																															
5	6	X																																														
3	4	X																																														
1	2	X																																														
0	1																																															
7	8	X																																														
5	6	X																																														
3	4	X																																														
1	2	X																																														
0	1																																															

<p>555 5 polos / 5 pole</p> <table border="1" data-bbox="330 1396 431 1476"> <tr><td>9</td><td>10</td><td>X</td></tr> <tr><td>7</td><td>8</td><td>X</td></tr> <tr><td>5</td><td>6</td><td>X</td></tr> <tr><td>3</td><td>4</td><td>X</td></tr> <tr><td>1</td><td>2</td><td>X</td></tr> <tr><td>0</td><td>1</td><td></td></tr> </table> <p>555</p>	9	10	X	7	8	X	5	6	X	3	4	X	1	2	X	0	1		<p>556 6 polos / 6 pole</p> <table border="1" data-bbox="330 1069 431 1149"> <tr><td>11</td><td>12</td><td>X</td></tr> <tr><td>9</td><td>10</td><td>X</td></tr> <tr><td>7</td><td>8</td><td>X</td></tr> <tr><td>5</td><td>6</td><td>X</td></tr> <tr><td>3</td><td>4</td><td>X</td></tr> <tr><td>1</td><td>2</td><td>X</td></tr> <tr><td>0</td><td>1</td><td></td></tr> </table> <p>556</p>	11	12	X	9	10	X	7	8	X	5	6	X	3	4	X	1	2	X	0	1		<p>558 8 polos / 8 pole</p> <table border="1" data-bbox="330 726 476 805"> <tr><td>15</td><td>16</td><td>X</td></tr> <tr><td>13</td><td>14</td><td>X</td></tr> <tr><td>11</td><td>12</td><td>X</td></tr> <tr><td>9</td><td>10</td><td>X</td></tr> <tr><td>7</td><td>8</td><td>X</td></tr> <tr><td>5</td><td>6</td><td>X</td></tr> <tr><td>3</td><td>4</td><td>X</td></tr> <tr><td>1</td><td>2</td><td>X</td></tr> <tr><td>0</td><td>1</td><td></td></tr> </table> <p>558</p>	15	16	X	13	14	X	11	12	X	9	10	X	7	8	X	5	6	X	3	4	X	1	2	X	0	1	
9	10	X																																																																		
7	8	X																																																																		
5	6	X																																																																		
3	4	X																																																																		
1	2	X																																																																		
0	1																																																																			
11	12	X																																																																		
9	10	X																																																																		
7	8	X																																																																		
5	6	X																																																																		
3	4	X																																																																		
1	2	X																																																																		
0	1																																																																			
15	16	X																																																																		
13	14	X																																																																		
11	12	X																																																																		
9	10	X																																																																		
7	8	X																																																																		
5	6	X																																																																		
3	4	X																																																																		
1	2	X																																																																		
0	1																																																																			

Commutadores con posición 0 / Change-over switches with off position

<p>560 unipolar / single pole</p> <table border="1" data-bbox="610 1356 655 1436"> <tr><td>3</td><td>4</td><td>X</td></tr> <tr><td>1</td><td>2</td><td>X</td></tr> <tr><td>0</td><td>1</td><td></td></tr> </table> <p>560</p>	3	4	X	1	2	X	0	1		<p>561 bipolar / double pole</p> <table border="1" data-bbox="610 1029 688 1125"> <tr><td>7</td><td>8</td><td>X</td></tr> <tr><td>5</td><td>6</td><td>X</td></tr> <tr><td>3</td><td>4</td><td>X</td></tr> <tr><td>1</td><td>2</td><td>X</td></tr> <tr><td>0</td><td>1</td><td></td></tr> </table> <p>561</p>	7	8	X	5	6	X	3	4	X	1	2	X	0	1		<p>562 tripolar / triple pole</p> <table border="1" data-bbox="610 726 688 805"> <tr><td>11</td><td>12</td><td>X</td></tr> <tr><td>9</td><td>10</td><td>X</td></tr> <tr><td>7</td><td>8</td><td>X</td></tr> <tr><td>5</td><td>6</td><td>X</td></tr> <tr><td>3</td><td>4</td><td>X</td></tr> <tr><td>1</td><td>2</td><td>X</td></tr> <tr><td>0</td><td>1</td><td></td></tr> </table> <p>562</p>	11	12	X	9	10	X	7	8	X	5	6	X	3	4	X	1	2	X	0	1		<p>563 tetrapolar / 4 pole</p> <table border="1" data-bbox="610 375 756 470"> <tr><td>15</td><td>16</td><td>X</td></tr> <tr><td>13</td><td>14</td><td>X</td></tr> <tr><td>11</td><td>12</td><td>X</td></tr> <tr><td>9</td><td>10</td><td>X</td></tr> <tr><td>7</td><td>8</td><td>X</td></tr> <tr><td>5</td><td>6</td><td>X</td></tr> <tr><td>3</td><td>4</td><td>X</td></tr> <tr><td>1</td><td>2</td><td>X</td></tr> <tr><td>0</td><td>1</td><td></td></tr> </table> <p>563</p>	15	16	X	13	14	X	11	12	X	9	10	X	7	8	X	5	6	X	3	4	X	1	2	X	0	1	
3	4	X																																																																									
1	2	X																																																																									
0	1																																																																										
7	8	X																																																																									
5	6	X																																																																									
3	4	X																																																																									
1	2	X																																																																									
0	1																																																																										
11	12	X																																																																									
9	10	X																																																																									
7	8	X																																																																									
5	6	X																																																																									
3	4	X																																																																									
1	2	X																																																																									
0	1																																																																										
15	16	X																																																																									
13	14	X																																																																									
11	12	X																																																																									
9	10	X																																																																									
7	8	X																																																																									
5	6	X																																																																									
3	4	X																																																																									
1	2	X																																																																									
0	1																																																																										

Commutadores sin posición 0 / Change-over switches without off position

<p>570 unipolar / single pole</p> <table border="1" data-bbox="879 1396 924 1476"> <tr><td>3</td><td>4</td><td>X</td></tr> <tr><td>1</td><td>2</td><td>X</td></tr> <tr><td>1</td><td>2</td><td></td></tr> </table> <p>570</p>	3	4	X	1	2	X	1	2		<p>571 bipolar / double pole</p> <table border="1" data-bbox="879 1069 957 1149"> <tr><td>7</td><td>8</td><td>X</td></tr> <tr><td>5</td><td>6</td><td>X</td></tr> <tr><td>3</td><td>4</td><td>X</td></tr> <tr><td>1</td><td>2</td><td>X</td></tr> <tr><td>1</td><td>2</td><td></td></tr> </table> <p>571</p>	7	8	X	5	6	X	3	4	X	1	2	X	1	2		<p>572 tripolar / triple pole</p> <table border="1" data-bbox="879 726 991 805"> <tr><td>11</td><td>12</td><td>X</td></tr> <tr><td>9</td><td>10</td><td>X</td></tr> <tr><td>7</td><td>8</td><td>X</td></tr> <tr><td>5</td><td>6</td><td>X</td></tr> <tr><td>3</td><td>4</td><td>X</td></tr> <tr><td>1</td><td>2</td><td>X</td></tr> <tr><td>1</td><td>2</td><td></td></tr> </table> <p>572</p>	11	12	X	9	10	X	7	8	X	5	6	X	3	4	X	1	2	X	1	2		<p>573 tetrapolar / 4 pole</p> <table border="1" data-bbox="879 399 1024 478"> <tr><td>15</td><td>16</td><td>X</td></tr> <tr><td>13</td><td>14</td><td>X</td></tr> <tr><td>11</td><td>12</td><td>X</td></tr> <tr><td>9</td><td>10</td><td>X</td></tr> <tr><td>7</td><td>8</td><td>X</td></tr> <tr><td>5</td><td>6</td><td>X</td></tr> <tr><td>3</td><td>4</td><td>X</td></tr> <tr><td>1</td><td>2</td><td>X</td></tr> <tr><td>1</td><td>2</td><td></td></tr> </table> <p>573</p>	15	16	X	13	14	X	11	12	X	9	10	X	7	8	X	5	6	X	3	4	X	1	2	X	1	2	
3	4	X																																																																									
1	2	X																																																																									
1	2																																																																										
7	8	X																																																																									
5	6	X																																																																									
3	4	X																																																																									
1	2	X																																																																									
1	2																																																																										
11	12	X																																																																									
9	10	X																																																																									
7	8	X																																																																									
5	6	X																																																																									
3	4	X																																																																									
1	2	X																																																																									
1	2																																																																										
15	16	X																																																																									
13	14	X																																																																									
11	12	X																																																																									
9	10	X																																																																									
7	8	X																																																																									
5	6	X																																																																									
3	4	X																																																																									
1	2	X																																																																									
1	2																																																																										