

PSU Installation Guide

IMO

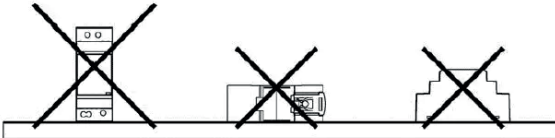
Installation Guide

Installation Clearances

To prevent the unit from overheating, always allow sufficient clearance around the unit for proper ventilation: 5 mm left and right, 40 mm above, and 20 mm below. You should also keep a 10 to 15 cm clearance from adjacent devices that act as a heat source.

Installation Orientation

The appropriate mounting orientation for the unit is vertical. The input terminals at the bottom and output on the top. Mounting orientations other than that, such as upside down, horizontal, or table-top mounting, is not allowed.



Mounting Instructions

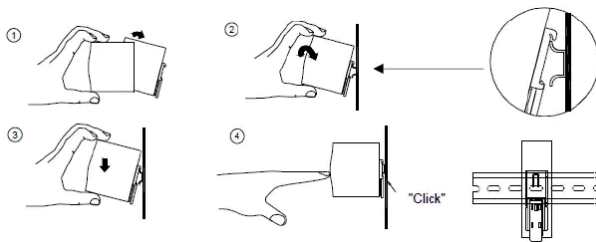
Mount as shown in figure only, with input terminals down, or else sufficient cooling will not be possible.

Admissible DIN rail : TS35/7.5 or TS35/15



Din rail mounting steps:

- 1, Rotate the unit backwards, as shown in the figure.
- 2, Fit the top of the unit over the top hat rail.
- 3, Slide it downward until it hits the stop.
- 4, Push the bottom of the unit forward until it snaps into place.
- 5, Move the unit back and forth to make sure it is locked in place.



Important Safety Precautions

Before working with a power supply, be sure to read and understand these instructions carefully and completely. You should also follow any notes or instructions on the unit itself.

- 1, Risk of electrical shock and energy hazard: If the device fails, it must be examined by a qualified technician. Do not remove the DIN-rail power supply casing yourself.
- 2, Risk of electric arcs and electric shock (danger to life): Do not connect the primary and secondary sides together, since doing so could result in life threatening shocks.
- 3, Before doing any installation, maintenance, or modification work, disconnect the system from the power source. Make sure that inadvertent connection in circuit will be impossible.