

# Rotary Cam Switch CS20A

Rotary Cam Switch with central fixing 22.5mm for panel mounting

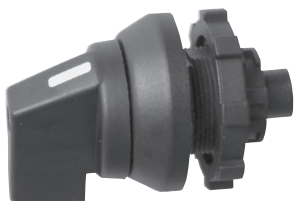
- Range of rotary cam switches with choice of 4 operators
- Key operators permit key removal in all latched positions
- Finger proof screw terminals to IP20 protection
- UL / CSA approved
- Designed to IEC 60947-3
- Single hole, front panel mounting
- Switch body supplied with legend plate for use with square escutcheon frame actuator



## Options & Ordering Codes

### Handle Operators

**RB2** Round Bezel



### Key Operators

**RBK2** Round Bezel



**SP2** Square Escutcheon



**SPK2** Square Escutcheon



## Specification

Rated thermal current $I_{th}$	A	20
Rated operational voltage $U_e$ IEC/VDE/BS	V	690
Utilisation category AC21A, AC21B	A	20
Rated operational current $I_e$		
Utilisation category AC23B @ 400V	A	16
Utilisation category AC15	220/240V 380/440V	6A 4A
Cable cross section	mm <sup>2</sup>	0.75 - 2.5
Contact material		Silver alloy
Mounting hole diameter		22.5mm
Maximum backup fuse (gl)		20A
Protection class from rear		IP20

## Accessories

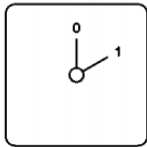
Spare Key	B4-R455
Tightening wrench	J7049

# Rotary Cam Switch CS20A

Rotary Cam Switch with central fixing 22.5mm for panel mounting

## Options & Ordering Codes continued

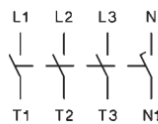
### Off-On Switch



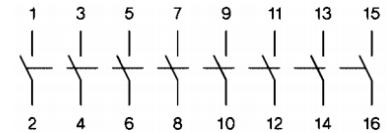
Description	Cells	Part Number
1 Pole	1	CS20A-A1
2 Pole	1	CS20A-A2
3 Pole	2	CS20A-A3
4 Pole	2	CS20A-A4
6 Pole	3	CS20A-A6
8 Pole	3	CS20A-A8

### Connection Diagram

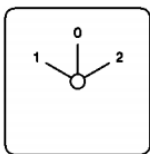
For 1-4 poles



For 6-8 poles



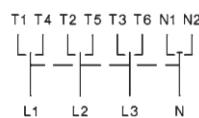
### Changeover switches, with off



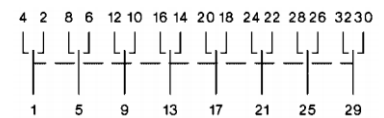
Description	Cells	Part Number
1 Pole	1	CS20A-U1
2 Pole	2	CS20A-U2
3 Pole	3	CS20A-U3
4 Pole	4	CS20A-U4
6 Pole	6	CS20A-U6
8 Pole	8	CS20A-U8

### Connection Diagram

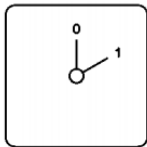
For 1-4 poles



For 6-8 poles



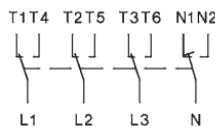
### Changeover switches, without off



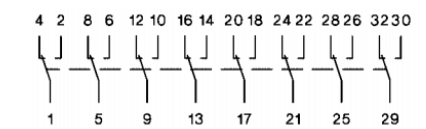
Description	Cells	Part Number
1 Pole	1	CS20A-W1
2 Pole	2	CS20A-W2
3 Pole	3	CS20A-W3
4 Pole	4	CS20A-W4
6 Pole	6	CS20A-W6
8 Pole	8	CS20A-W8

### Connection Diagram

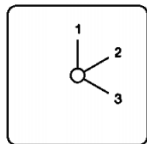
For 1-4 poles



For 6-8 poles

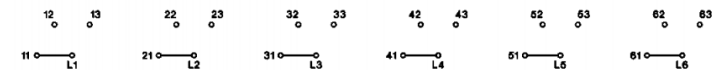


### 3 position step switches, without off

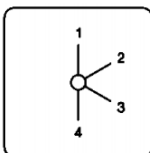


Description	Cells	Part Number
1 Pole	2	CS20A-ST31
2 Pole	3	CS20A-ST32
3 Pole	5	CS20A-ST33

### Connection Diagram

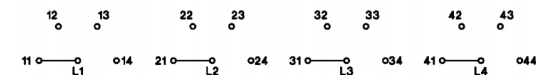


### 4 position step switches, without off

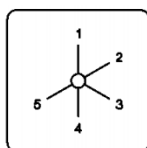


Description	Cells	Part Number
1 Pole	2	CS20A-ST41
2 Pole	4	CS20A-ST42
3 Pole	6	CS20A-ST43

### Connection Diagram

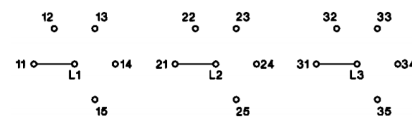


### 5 position step switches, without off



Description	Cells	Part Number
1 Pole	3	CS20A-ST51
2 Pole	5	CS20A-ST52
3 Pole	8	CS20A-ST53

### Connection Diagram

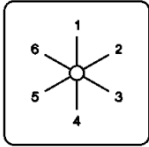


# Rotary Cam Switch CS20A

Rotary Cam Switch with central fixing 22.5mm for panel mounting

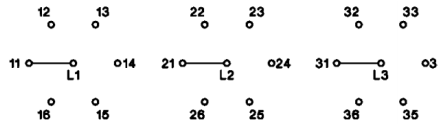
## Options & Ordering Codes continued

6 position step switches, without off

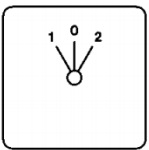


Description	Cells	Part Number
1 Pole	3	CS20A-ST61
2 Pole	6	CS20A-ST62
3 Pole	9	CS20A-ST63

Connection Diagram

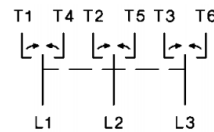


Changeover switch, with spring return to off

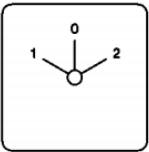


Description	Cells	Part Number
1 Pole	1	CS20A-UR1
2 Pole	2	CS20A-UR2
3 Pole	3	CS20A-UR3

Connection Diagram

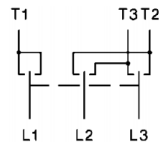


3 phase motor reversing switch

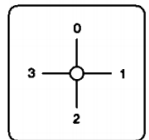


Description	Cells	Part Number
5.5kW @ 3~440V	3	CS20A-WU3

Connection Diagram

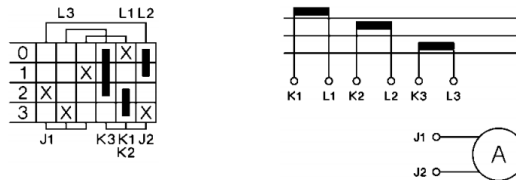


3 current transformers

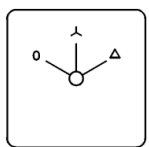


Description	Cells	Part Number
1 Pole	3	CS20A-M31

Connection Diagram

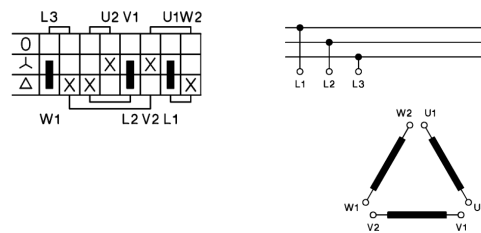


Star Delta switches



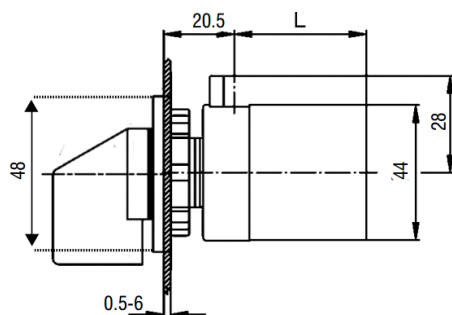
Description	Cells	Part Number
1 Rotary Direction 5.5kW @ 3~440V	4	CS20A-SD

Connection Diagram

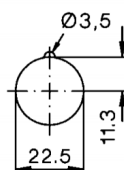


## Dimensions

Central fixing 22.5mm **CS20A**



Mounting hole



Additional Cam Switch dimensions L with .. cells

Type	1	2	3	4	5	6	7	8
CS20A	36.5	46	55.5	65	74.5	84	93.5	103