

iView HMI Data Logging Tutorial



HMI solutions **you can view**

Table Of Contents

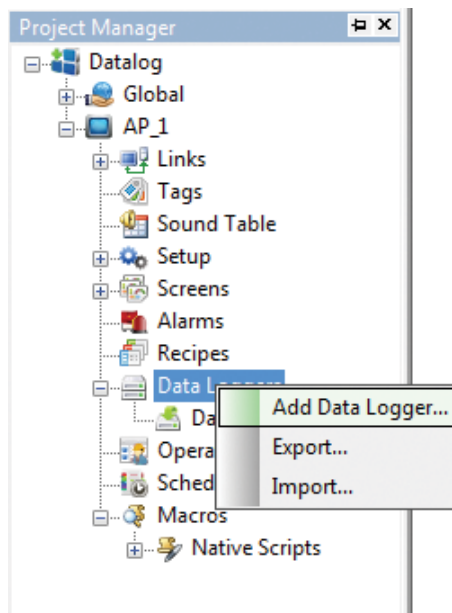
iView Data Logger.....	3
Data Logger - General.....	4
Data Logger - Data Item.....	5

Information in this document is subject to change without notice and does not represent a commitment on the part of IMO Precision Controls Ltd.

iView Data Logger

There are two ways to open the dialog box of a data logger, as follows:-

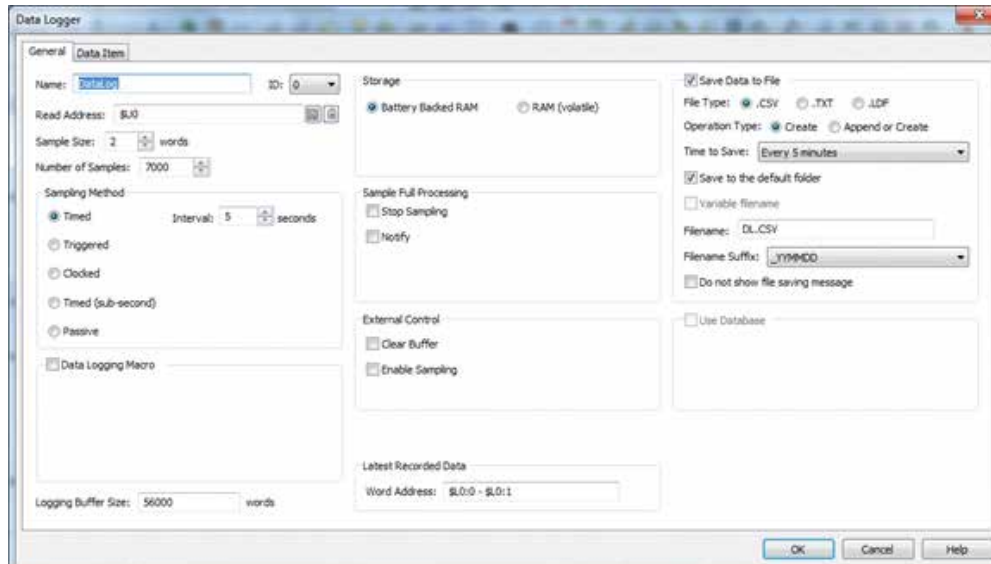
1. In the Project Manager window, right-click the node of the “Data Loggers” and select Add Data Logger



2. In the menu bar, click Panel to bring up the Panel sub-menu. Click Data Logger in the Panel sub-menu to bring up the Data Logger pop-up menu. Select Add in the pop-up menu to bring up the data logger.

In the Data Logger properties window as shown below, enter the settings as required.

Data Logger - General



Read Address - This is the starting address of the register to be logged.

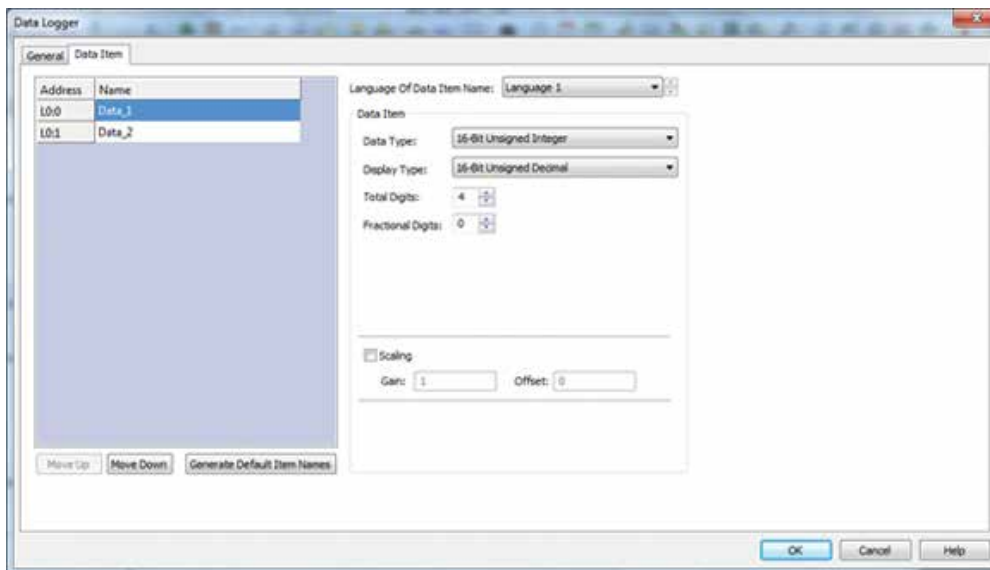
Sample Size - This is the number of registers required to be logged from the Read Address

Number of Samples - This is the number of samples required in logging operation.

Sampling Method - Choose the required method of sampling and this setting determines how often the sampling is taken.

The data logging by default is saved into the Storage medium specified under the 'Storage setting'. The 'Save Data to File' setting determines how often the buffer is cleared and written to the log file which can be a .txt, .csv or .ldf formatted file.

Data Logger - Data Item



Enter the name of each item in the data logger so that the names of item is shown in the .csv file as shown below

Date	Time	Data_1	Data_2
12/02/2015	17:10:04	77	55
12/02/2015	17:10:09	77	55
12/02/2015	17:10:14	77	55
12/02/2015	17:10:19	77	55
12/02/2015	17:10:24	77	55
12/02/2015	17:10:29	77	55

Programs

iView - Datalog R00215.pm3

IMO Worldwide Offices

IMO Precision Controls Limited

1000 North Circular Road
Staples Corner
London NW2 7JP
United Kingdom

Tel: 020 8452 6444
Fax: 020 8450 2274
Email: sales@imopc.com
Web: www.imopc.com

IMO Automazione

Via Ponte alle Mosse, 61
50144 Firenze (FI)
Italia

Tel: 800 930 872 (toll free)
Fax: 8000 452 6445
Email: sales@imopc.com
Web: www.imopc.it

IMO Russia

Office N° 4063
9, Zemlyanoy Val, 105064
Moscow
Russia

Tel: 8 800 100 8540 (toll free)
Fax: 8 800 100 8541
Email: sales@imopc.com
Web: www.imopc.com

IMO Jeambrun Automation SAS

Centre D'Affaires Rocroy
30, Rue de Rocroy
94100 Saint-Maur-Des-Fosses
France

Tel: 0800 912 712 (toll free)
Fax: 0145 134 737
Email: sales@imopc.com
Web: www.imojeambrun.fr

IMO Canada

Unit 32 - B - North
18 Stratheam Avenue, Brampton
Ontario L6T 4Y2
Canada

Tel: 905 799 9237 (local)
Fax: 905 799 0450
Email: sales@imopc.com
Web: www.imopc.com

IMO Pacific Pty Ltd

1/34 Fallon Road
Landsdale
Perth WA 6065
Australia

Tel: 08 9302 5246 (local)
Fax: 08 9303 9908
Email: sales@imopacific.com.au
Web: www.imopacific.com.au