

*i*View HMI - *i*³ Communication Tutorial



HMI solutions *you can view*

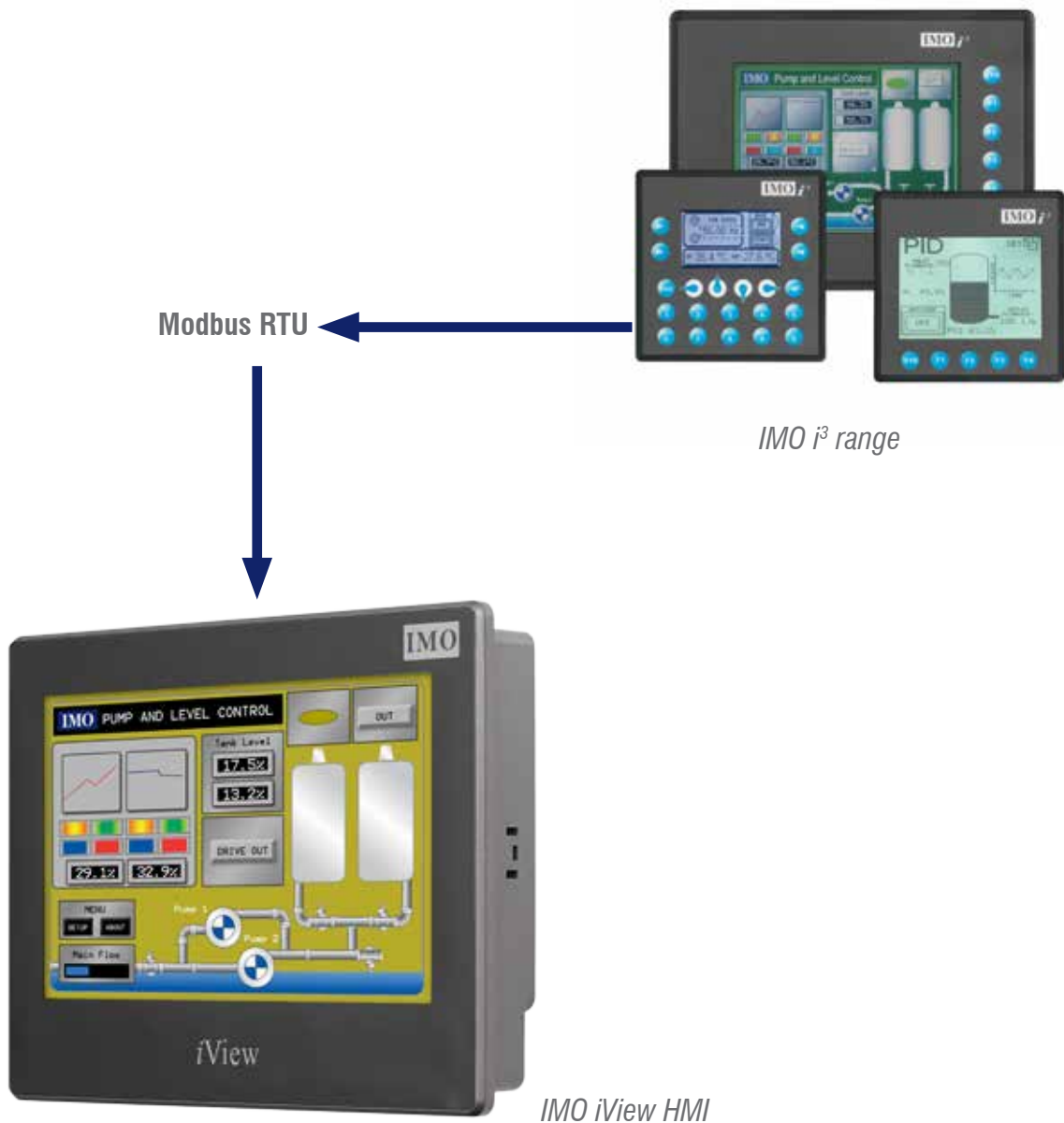
Table Of Contents

INTRODUCTION.....	3
IVIEW DEVELOPER SOFTWARE.....	4
I3 CONFIGURATOR SOFTWARE.....	6
WIRING.....	8
NOTES.....	9

Information in this document is subject to change without notice and does not represent a commitment on the part of IMO Precision Controls Ltd.

Introduction

The iView HMI and i3 controller can be connected together over the Modbus RTU protocol. The settings required for the setup in both controllers are explained in the following chapters.



iView Developer Software

Open the Project Manager under View > Project Manager

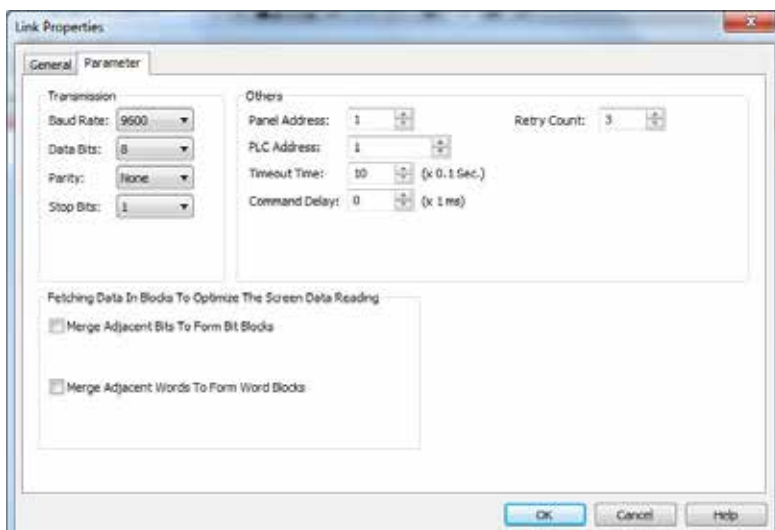
In the Project Manager > Open the Application Program Section (AP_1) > Links. Right Click Links > Add Link.

Configure the link table as below.

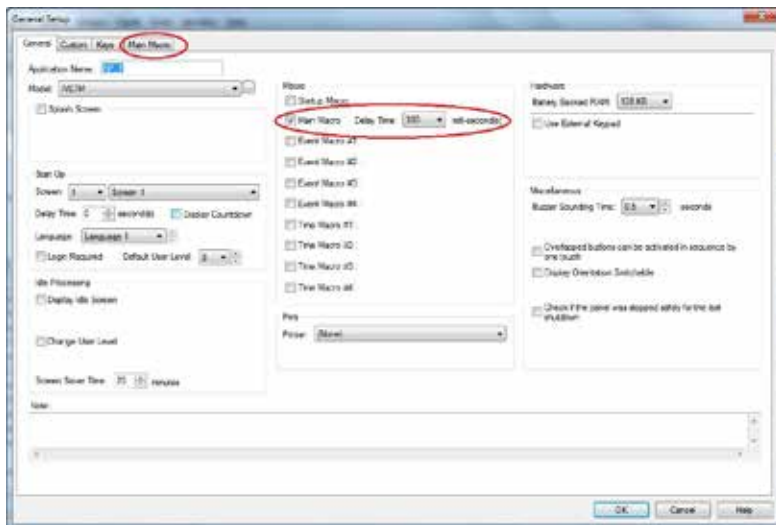
General



Parameter



Now Expand the following, Setup > General Setup



Open the Main Macro to run a simple script to read and write registers between the i3 and iView.

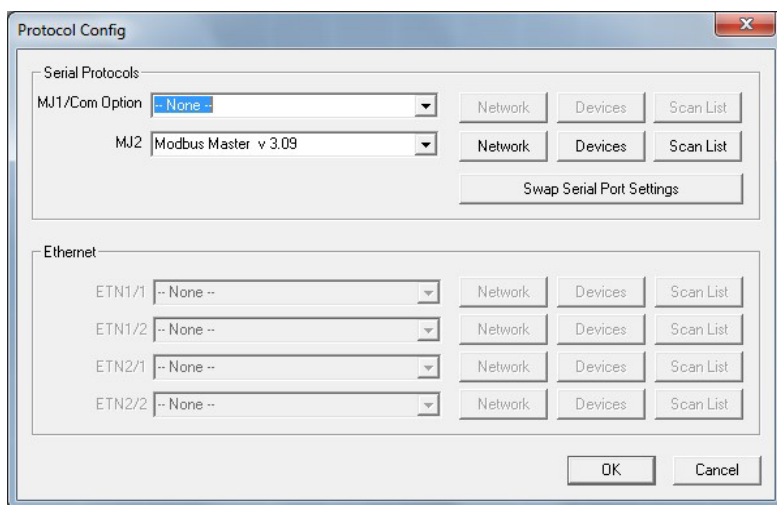
Macro name:

0	<code>1\40001=mov (\$u0,5)</code>
1	<code>\$u5=mov (1\40006,5)</code>
2	

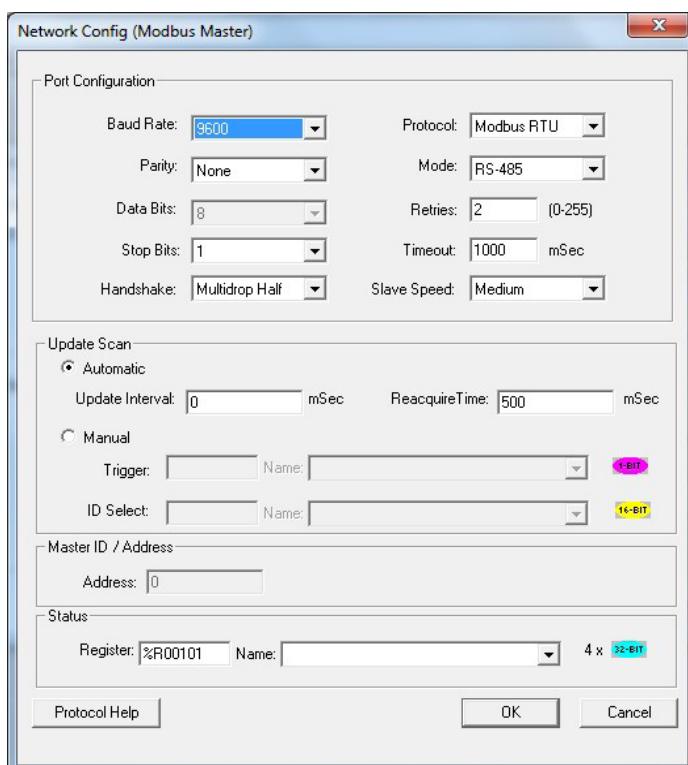
i³ Configurator Software

Open the Program > Protocol Configuration. Select the Modbus Master Protocol in the MJ2 and configure the Network, Devices and Scan list as shown below.

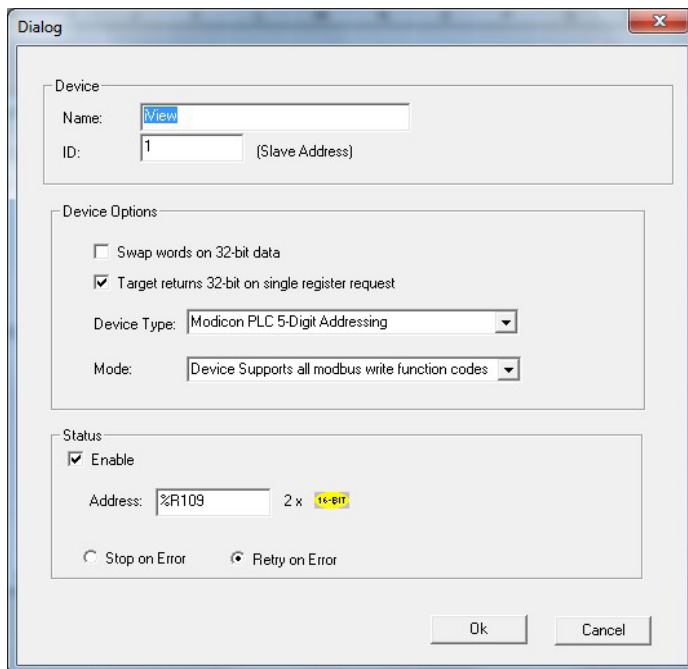
Protocol Configuration



Network



Devices



Dialog

Device

Name:

ID: (Slave Address)

Device Options

Swap words on 32-bit data

Target returns 32-bit on single register request

Device Type:

Mode:

Status

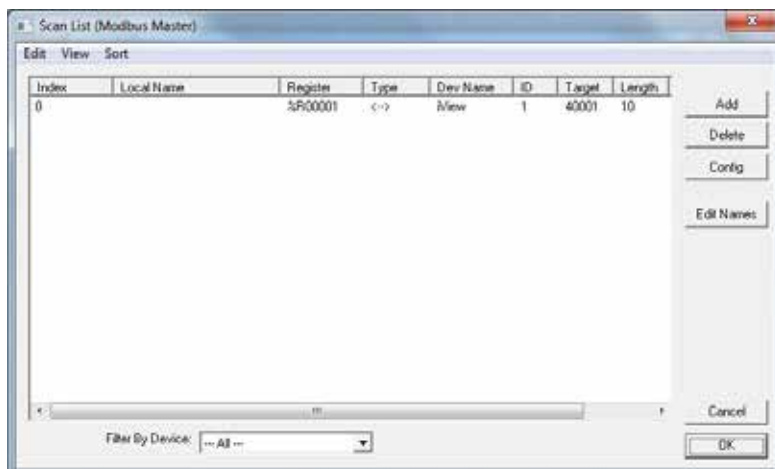
Enable

Address: 2 x

Stop on Error Retry on Error

Ok Cancel

Scan List



Scan List (Modbus Master)

Edit View Sort

Index	Local Name	Register	Type	Dev Name	ID	Target	Length
0		%R0001	<->	View	1	4001	10

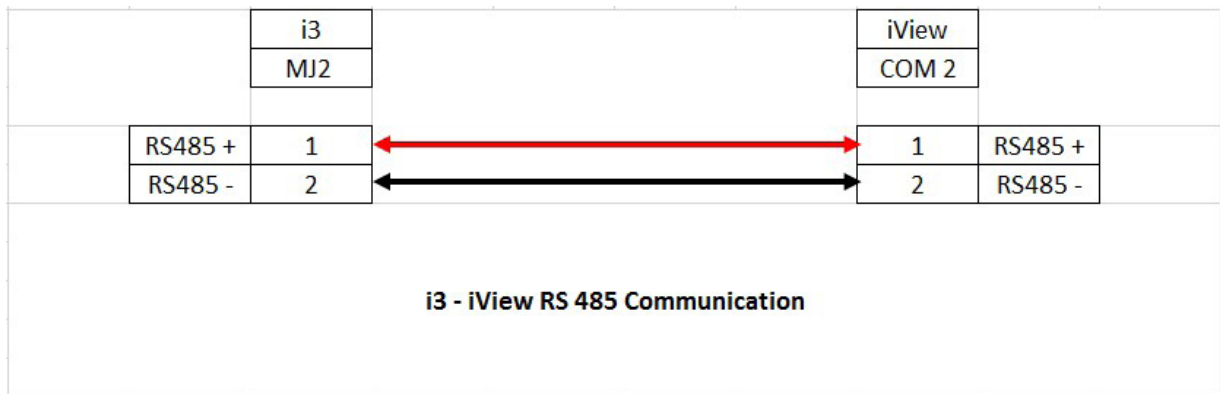
Add
Delete
Config
Edit Names
Cancel
OK

Filter By Device:

Attached Programs

iView Program - iV i3.pm3
i3 Program - iV i3.csp

Wiring



Notes

IMO Worldwide Offices

IMO Precision Controls Limited

1000 North Circular Road
Staples Corner
London NW2 7JP
United Kingdom

Tel: 020 8452 6444
Fax: 020 8450 2274
Email: sales@imopc.com
Web: www.imopc.com

IMO Automazione

Via Ponte alle Mosse, 61
50144 Firenze (FI)
Italia

Tel: 800 930 872 (toll free)
Fax: 8000 452 6445
Email: sales@imopc.com
Web: www.imopc.it

IMO Russia

Office N° 4063
9, Zemlyanoy Val, 105064
Moscow
Russia

Tel: 8 800 100 8540 (toll free)
Fax: 8 800 100 8541
Email: sales@imopc.com
Web: www.imopc.com

IMO Jeambrun Automation SAS

Centre D'Affaires Rocroy
30, Rue de Rocroy
94100 Saint-Maur-Des-Fosses
France

Tel: 0800 912 712 (toll free)
Fax: 0145 134 737
Email: sales@imopc.com
Web: www.imojeambrun.fr

IMO Canada

Unit 32 - B - North
18 Stratheam Avenue, Brampton
Ontario L6T 4Y2
Canada

Tel: 905 799 9237 (local)
Fax: 905 799 0450
Email: sales@imopc.com
Web: www.imopc.com

IMO Pacific Pty Ltd

1/34 Fallon Road
Landsdale
Perth WA 6065
Australia

Tel: 08 9302 5246 (local)
Fax: 08 9303 9908
Email: sales@imopacific.com.au
Web: www.imopacific.com.au