

iView HMI (& Siemens S7-300 MPI) Communication Tutorial



HMI solutions *you can view*

Table Of Contents

INTRODUCTION.....	3
PLC PARAMETER SETTING.....	4
CONNECTION CABLE DIAGRAM.....	6
HMI SETTING.....	7
PLC MEMORY ADDRESS.....	8
NOTES.....	9

Information in this document is subject to change without notice and does not represent a commitment on the part of IMO Precision Controls Ltd.

Introduction

This tech note introduces how to connect **Siemens S7-300 MPI Port** with iView HMI.



Siemens S7-300 CPU

MPI Port



IMO iView HMI

PLC Parameter Setting

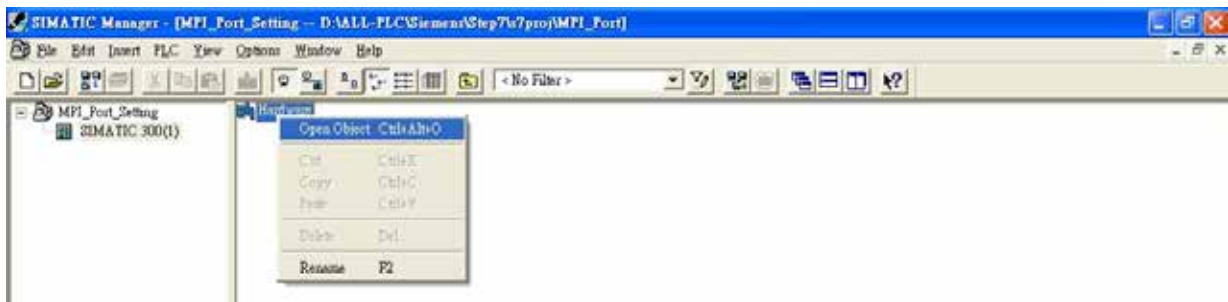
a) Execute the “STEP7” software to link with the S7-300 CPU via PC Adapter programming cable.



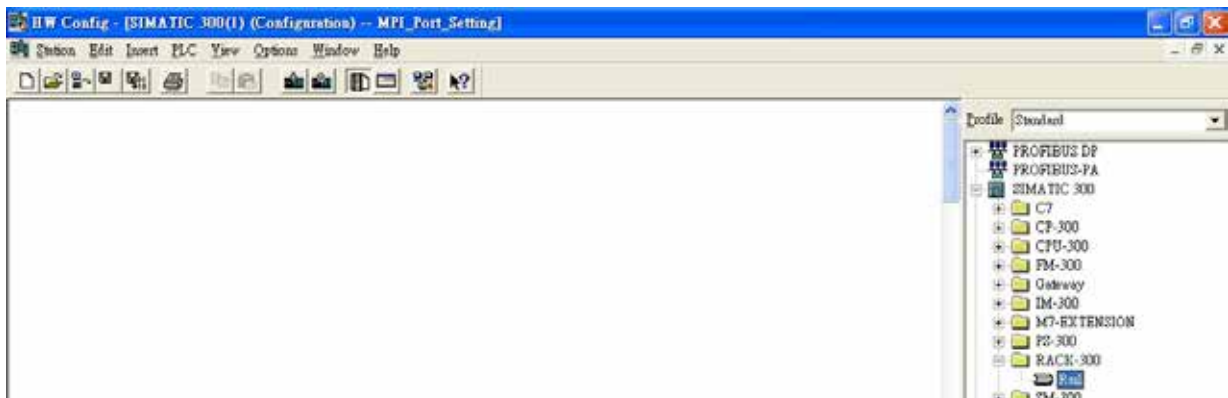
b) Create a new project following the steps below and set the CPU communication format.



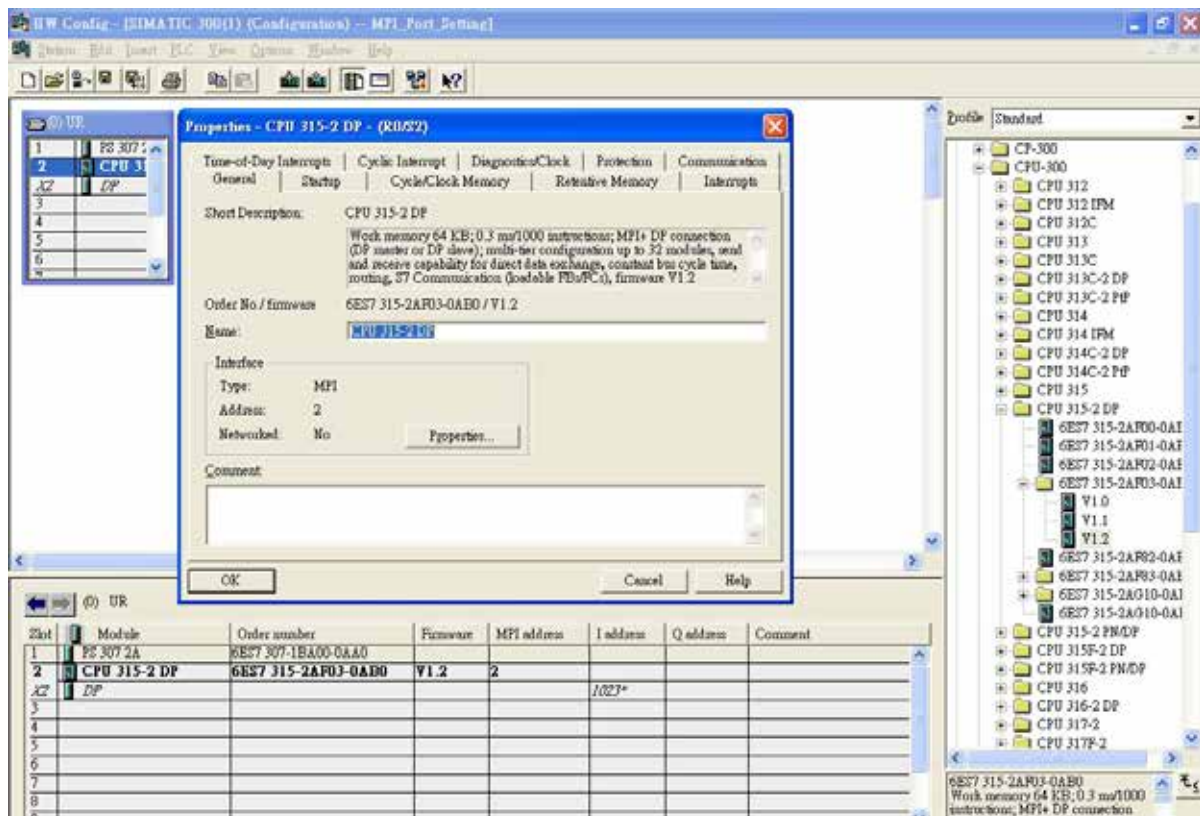
c) Create the S7-300 Station



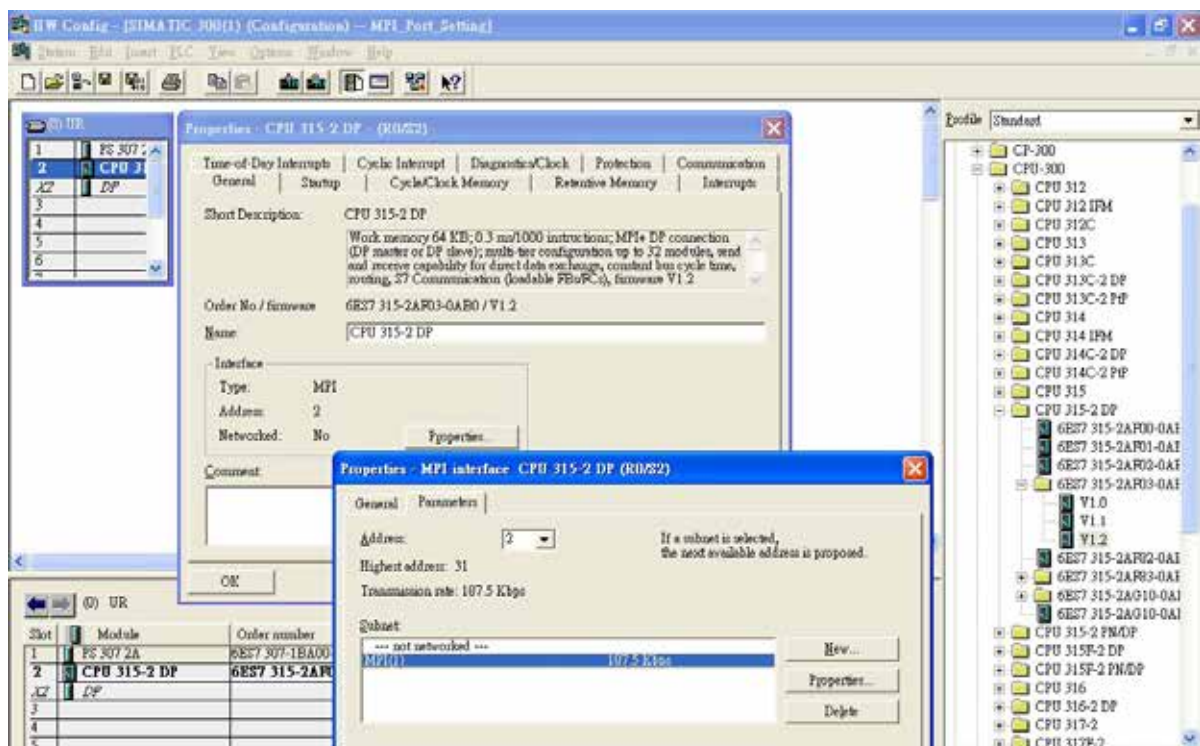
d) Enter “Hardware” option



e) Insert a “Rail” from RACK option



f) Insert a “CPU” unit into slot2, double-click it enter the properties window. Under CPU properties window, you can see the standard transmission rate is 187.5Kbps. Please use it to link with iView series HMI directly.



Note:

We will suggest not to set “0” or “1” for the PLC and HMI address node. Node “0”: reserved for PC / WinCC. Node “1”: Step7 Software.

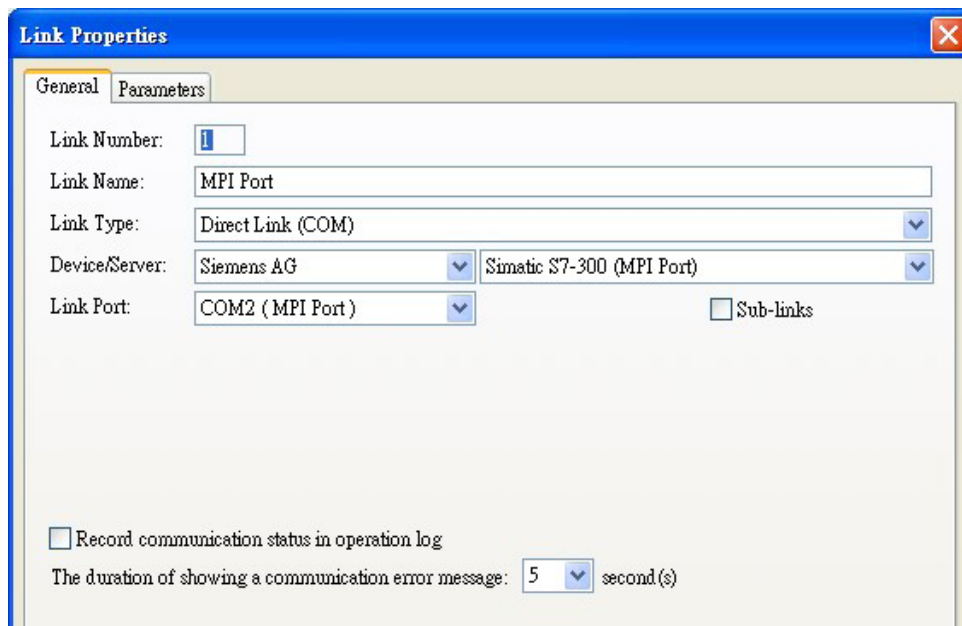
Connection Cable Diagram

HMI Side			PLC Cable Side	
COM1 9-PIN Male			MPI Port 9-PIN Male (RS485)	
485 +	1		3	485+
485 -	6		8	485-
SG	5		5	SG

HMI Side			PLC Cable Side	
COM2 T.B. 5-PIN			MPI Port 9-PIN Male (RS485)	
485 +	1		3	485+
485 -	2		8	485-
SG	5		5	SG

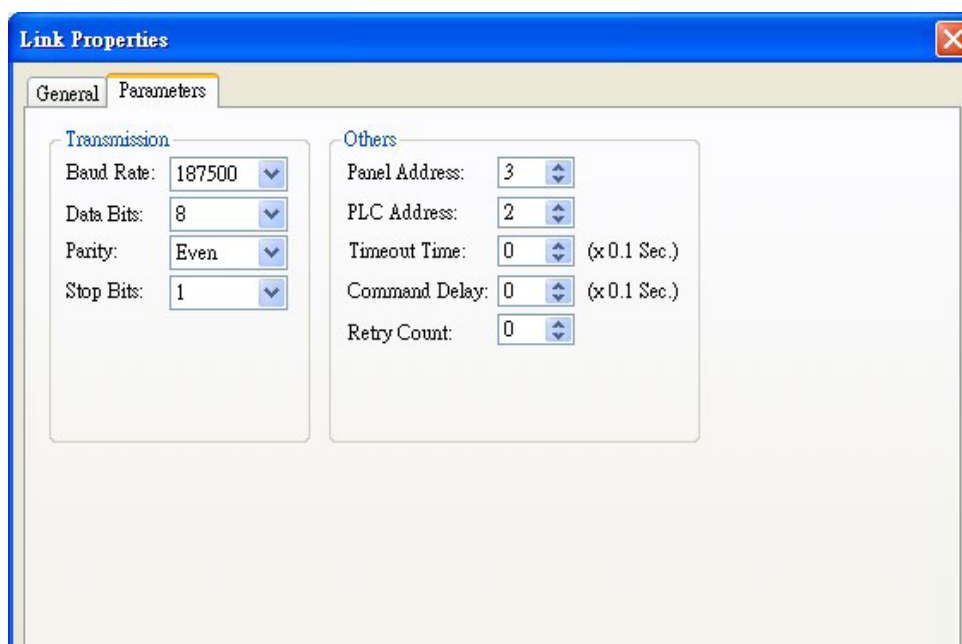
HMI Setting

a) Select [Device/Server: Siemens AG → Simatic S7-300 (MPI Port)]



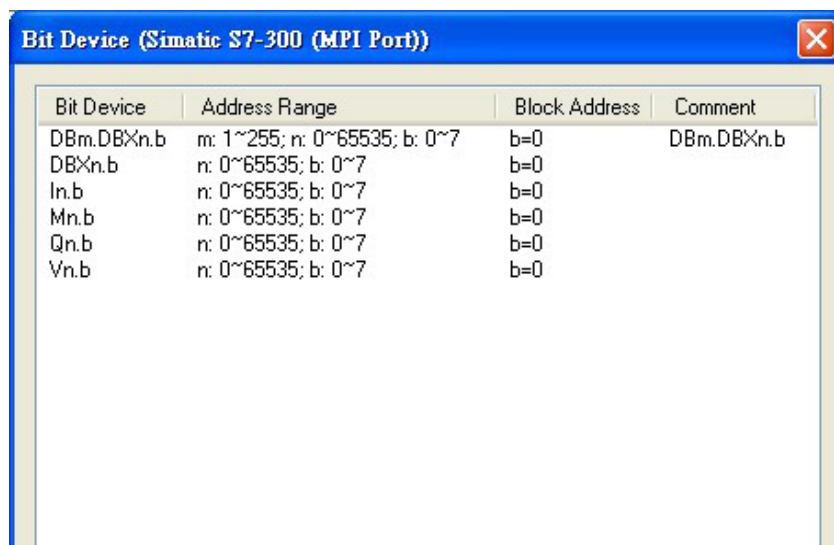
NOTE: Driver named as C39021.dll and C39021.mod

b) Set the HMI link port parameter identical with PLC communication parameter



PLC Memory Address

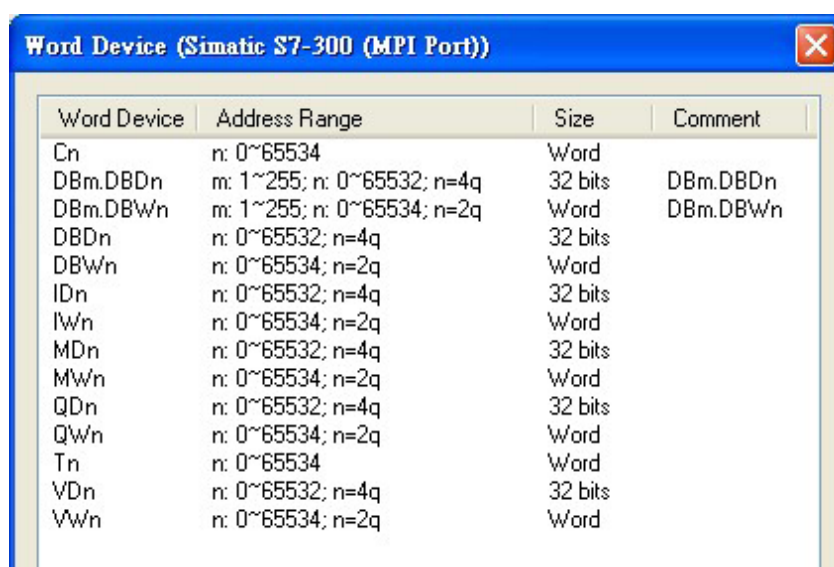
Bit Devices:



Bit Device	Address Range	Block Address	Comment
DBm.DBXn.b	m: 1~255; n: 0~65535; b: 0~7	b=0	DBm.DBXn.b
DBXn.b	n: 0~65535; b: 0~7	b=0	
In.b	n: 0~65535; b: 0~7	b=0	
Mn.b	n: 0~65535; b: 0~7	b=0	
Qn.b	n: 0~65535; b: 0~7	b=0	
Vn.b	n: 0~65535; b: 0~7	b=0	

NOTE: Device named DBXn.b specified same as DB10.DBXn.b.

Word Devices:



Word Device	Address Range	Size	Comment
Cn	n: 0~65534	Word	
DBm.DBDbn	m: 1~255; n: 0~65532; n=4q	32 bits	DBm.DBDbn
DBm.DBWn	m: 1~255; n: 0~65534; n=2q	Word	DBm.DBWn
DBDbn	n: 0~65532; n=4q	32 bits	
DBWn	n: 0~65534; n=2q	Word	
IDn	n: 0~65532; n=4q	32 bits	
IWn	n: 0~65534; n=2q	Word	
MDn	n: 0~65532; n=4q	32 bits	
MWn	n: 0~65534; n=2q	Word	
QDn	n: 0~65532; n=4q	32 bits	
QWn	n: 0~65534; n=2q	Word	
Tn	n: 0~65534	Word	
VDn	n: 0~65532; n=4q	32 bits	
VWn	n: 0~65534; n=2q	Word	

NOTE: Device named DBDbn/VDn specified same as DB10.DBDbn.

Notes

IMO Worldwide Offices

IMO Precision Controls Limited

1000 North Circular Road
Staples Corner
London NW2 7JP
United Kingdom

Tel: 020 8452 6444
Fax: 020 8450 2274
Email: sales@imopc.com
Web: www.imopc.com

IMO Automazione

Via Ponte alle Mosse, 61
50144 Firenze (FI)
Italia

Tel: 800 930 872 (toll free)
Fax: 8000 452 6445
Email: sales@imopc.com
Web: www.imopc.it

IMO Russia

Office N° 4063
9, Zemlyanoy Val, 105064
Moscow
Russia

Tel: 8 800 100 8540 (toll free)
Fax: 8 800 100 8541
Email: sales@imopc.com
Web: www.imopc.com

IMO Jeambrun Automation SAS

Centre D'Affaires Rocroy
30, Rue de Rocroy
94100 Saint-Maur-Des-Fosses
France

Tel: 0800 912 712 (toll free)
Fax: 0145 134 737
Email: sales@imopc.com
Web: www.imojeambrun.fr

IMO Canada

Unit 32 - B - North
18 Stratheam Avenue, Brampton
Ontario L6T 4Y2
Canada

Tel: 905 799 9237 (local)
Fax: 905 799 0450
Email: sales@imopc.com
Web: www.imopc.com

IMO Pacific Pty Ltd

1/34 Fallon Road
Landsdale
Perth WA 6065
Australia

Tel: 08 9302 5246 (local)
Fax: 08 9303 9908
Email: sales@imopacific.com.au
Web: www.imopacific.com.au