

# *iView* HMI (& XEC Modbus RTU) Communication Tutorial

---



HMI solutions *you can view*

# Table Of Contents

---

INTRODUCTION.....	3
IVIEW DEVELOPER SOFTWARE.....	4
XG5000 SOFTWARE.....	6
WIRING.....	8
NOTES.....	9

Information in this document is subject to change without notice and does not represent a commitment on the part of IMO Precision Controls Ltd.

# Introduction

The iView HMI and XEC PLC can be connected together over the Modbus RTU protocol. The settings required for the setup in both controllers are explained in the following chapters.



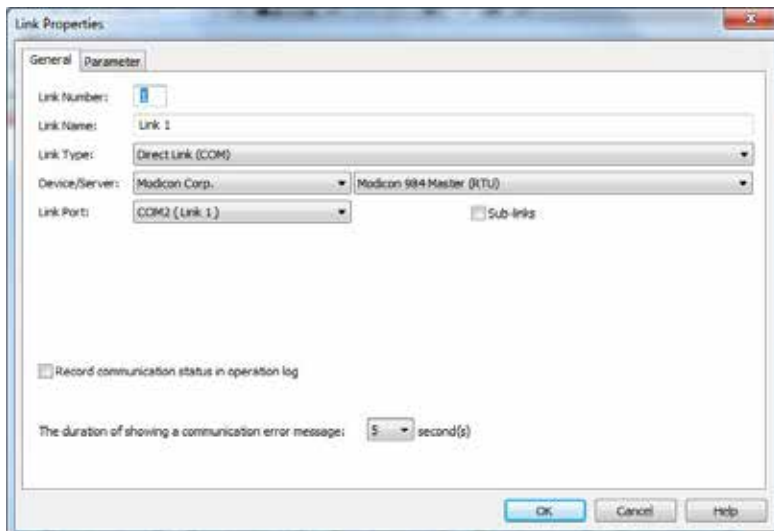
# iView Developer Software

Open the Project Manager under View > Project Manager

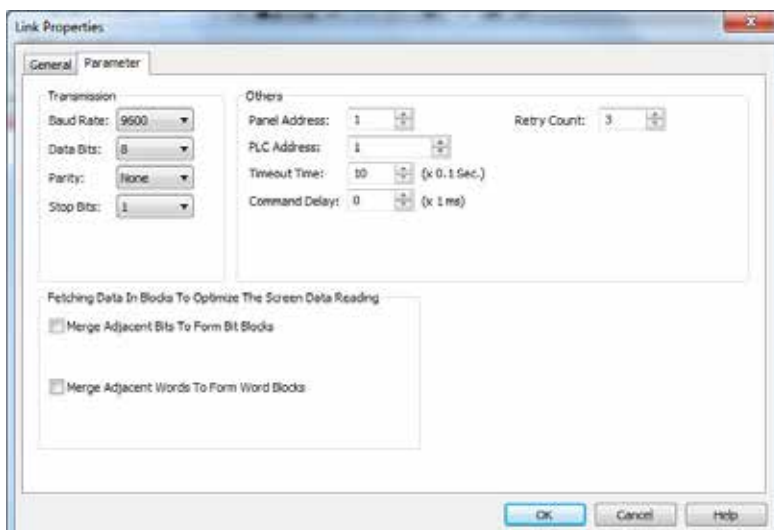
In the Project Manager > Open the Application Program Section (AP\_1) > Links. Right Click Links > Add Link.

Configure the link table as below.

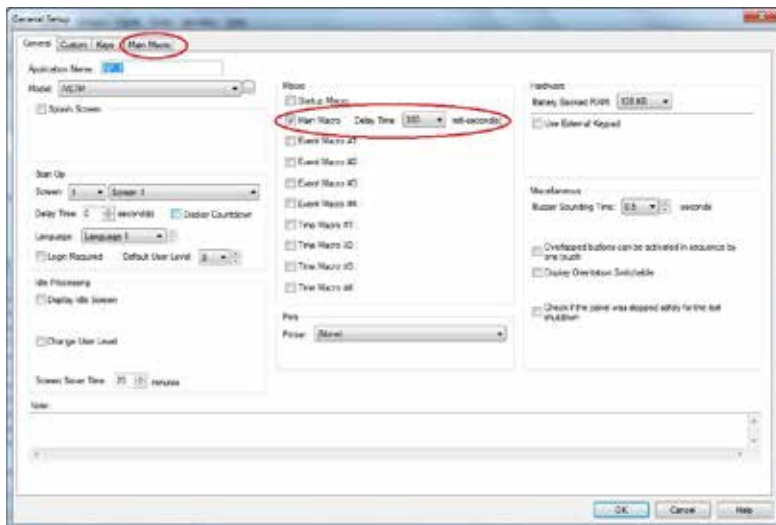
## General



## Parameter



Now Expand the following, Setup > General Setup



Open the Main Macro to run a simple script to read and write registers between the XEC PLC and iView.

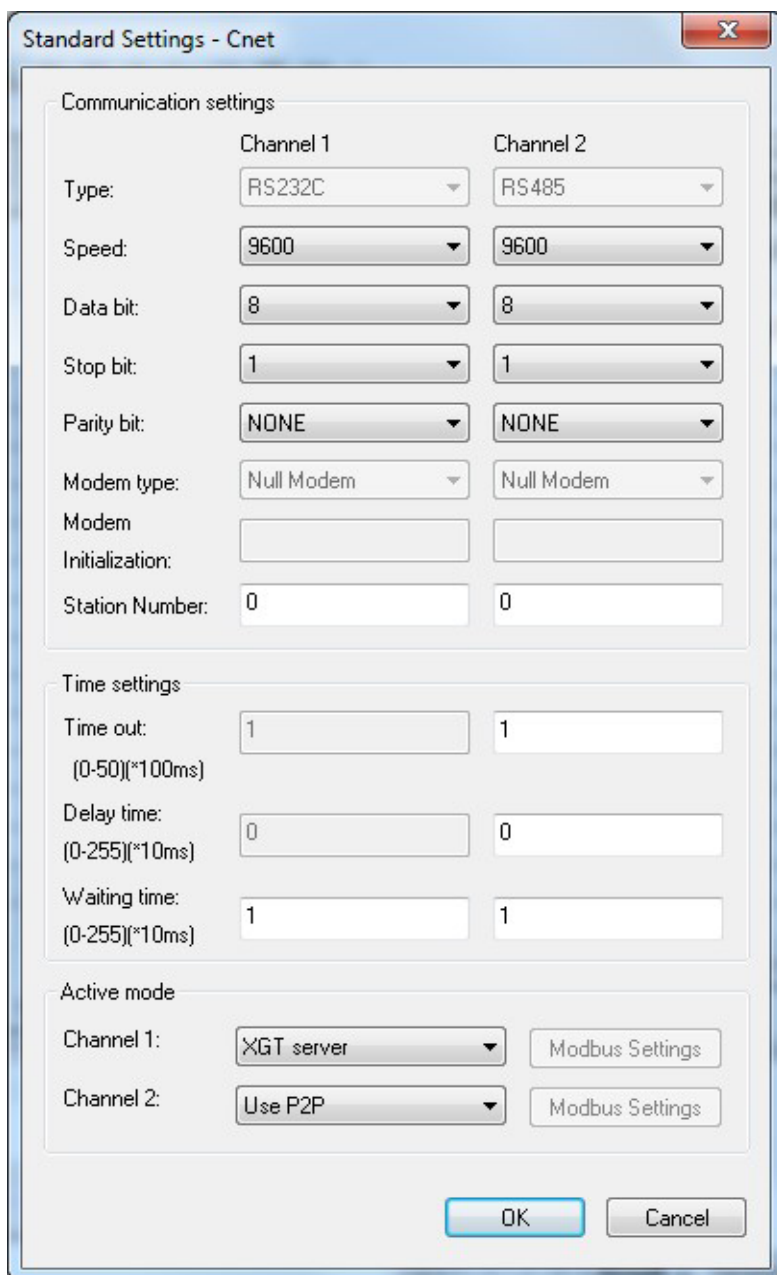
Macro name:

0	<code>1\40001=mov (\$u0,5)</code>
1	<code>\$u5=mov (1\40006,5)</code>
2	

# XG5000 Software

Open the XG-PD tool in the XG5000 software, Tools > Network Manager  
 Configure the Embedded CNet as below.

## Standard Settings



	Channel 1	Channel 2
Type:	RS232C	RS485
Speed:	9600	9600
Data bit:	8	8
Stop bit:	1	1
Parity bit:	NONE	NONE
Modem type:	Null Modem	Null Modem
Modem Initialization:		
Station Number:	0	0

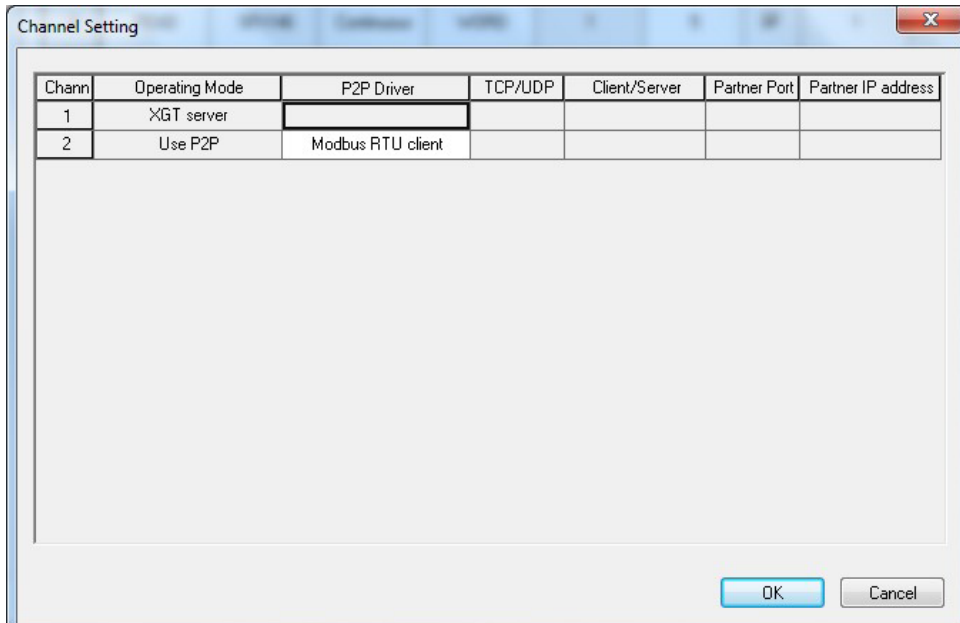
  

	Channel 1	Channel 2
Time out: (0-50)(*100ms)	1	1
Delay time: (0-255)(*10ms)	0	0
Waiting time: (0-255)(*10ms)	1	1

Active mode	Channel 1	Channel 2
	XGT server	Use P2P
	Modbus Settings	Modbus Settings

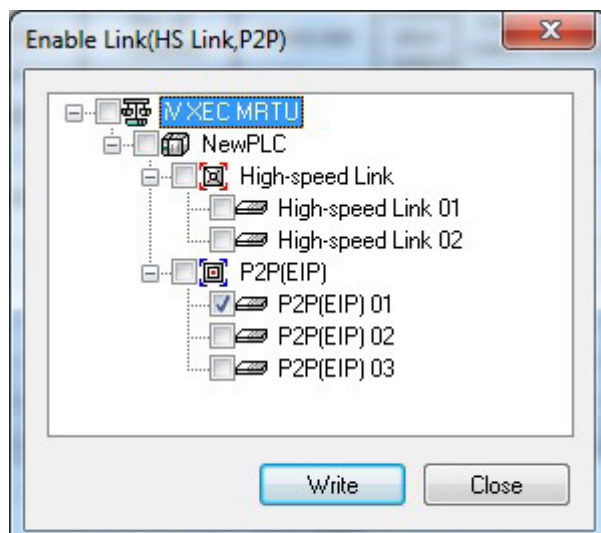
## P2P Channel



## P2P Block

Index	Ch.	Driver Setting	P2P function	Conditional flag	Command type	Data type	No. of variables	Data size	Destination station	Destination station number	Frame	Setting	Variable setting contents
0	2	Modbus RTU client	READ	350146	Continuous	WORD	1	5	<input checked="" type="checkbox"/>	1		Setting	Number 1 READ1:0x40000.SAVE1:3MW0
1	2	Modbus RTU client	WRITE	350146	Continuous	WORD	1	5	<input checked="" type="checkbox"/>	1		Setting	Number 1 READ1:3MW5.SAVE1:0x40005
2												Setting	
3												Setting	

Write the parameter to the PLC, Online > Write Parameter  
 Enable the P2P Link, Online > Enable Link (HS Link, P2P) as below



## Attached Programs

iView Program – iV XEC.pm3  
 XEC XG-PD Program - iV XEC MRTU.xfg

# Wiring





# Notes

---

## IMO Worldwide Offices

---

### **IMO Precision Controls Limited**

1000 North Circular Road  
Staples Corner  
London NW2 7JP  
United Kingdom

Tel: 020 8452 6444  
Fax: 020 8450 2274  
Email: [sales@imopc.com](mailto:sales@imopc.com)  
Web: [www.imopc.com](http://www.imopc.com)

### **IMO Automazione**

Via Ponte alle Mosse, 61  
50144 Firenze (FI)  
Italia

Tel: 800 930 872 (toll free)  
Fax: 8000 452 6445  
Email: [sales@imopc.com](mailto:sales@imopc.com)  
Web: [www.imopc.it](http://www.imopc.it)

### **IMO Russia**

Office N° 4063  
9, Zemlyanoy Val, 105064  
Moscow  
Russia

Tel: 8 800 100 8540 (toll free)  
Fax: 8 800 100 8541  
Email: [sales@imopc.com](mailto:sales@imopc.com)  
Web: [www.imopc.com](http://www.imopc.com)

### **IMO Jeambrun Automation SAS**

Centre D'Affaires Rocroy  
30, Rue de Rocroy  
94100 Saint-Maur-Des-Fosses  
France

Tel: 0800 912 712 (toll free)  
Fax: 0145 134 737  
Email: [sales@imopc.com](mailto:sales@imopc.com)  
Web: [www.imojeambrun.fr](http://www.imojeambrun.fr)

### **IMO Canada**

Unit 32 - B - North  
18 Stratheam Avenue, Brampton  
Ontario L6T 4Y2  
Canada

Tel: 905 799 9237 (local)  
Fax: 905 799 0450  
Email: [sales@imopc.com](mailto:sales@imopc.com)  
Web: [www.imopc.com](http://www.imopc.com)

### **IMO Pacific Pty Ltd**

1/34 Fallon Road  
Landsdale  
Perth WA 6065  
Australia

Tel: 08 9302 5246 (local)  
Fax: 08 9303 9908  
Email: [sales@imopacific.com.au](mailto:sales@imopacific.com.au)  
Web: [www.imopacific.com.au](http://www.imopacific.com.au)