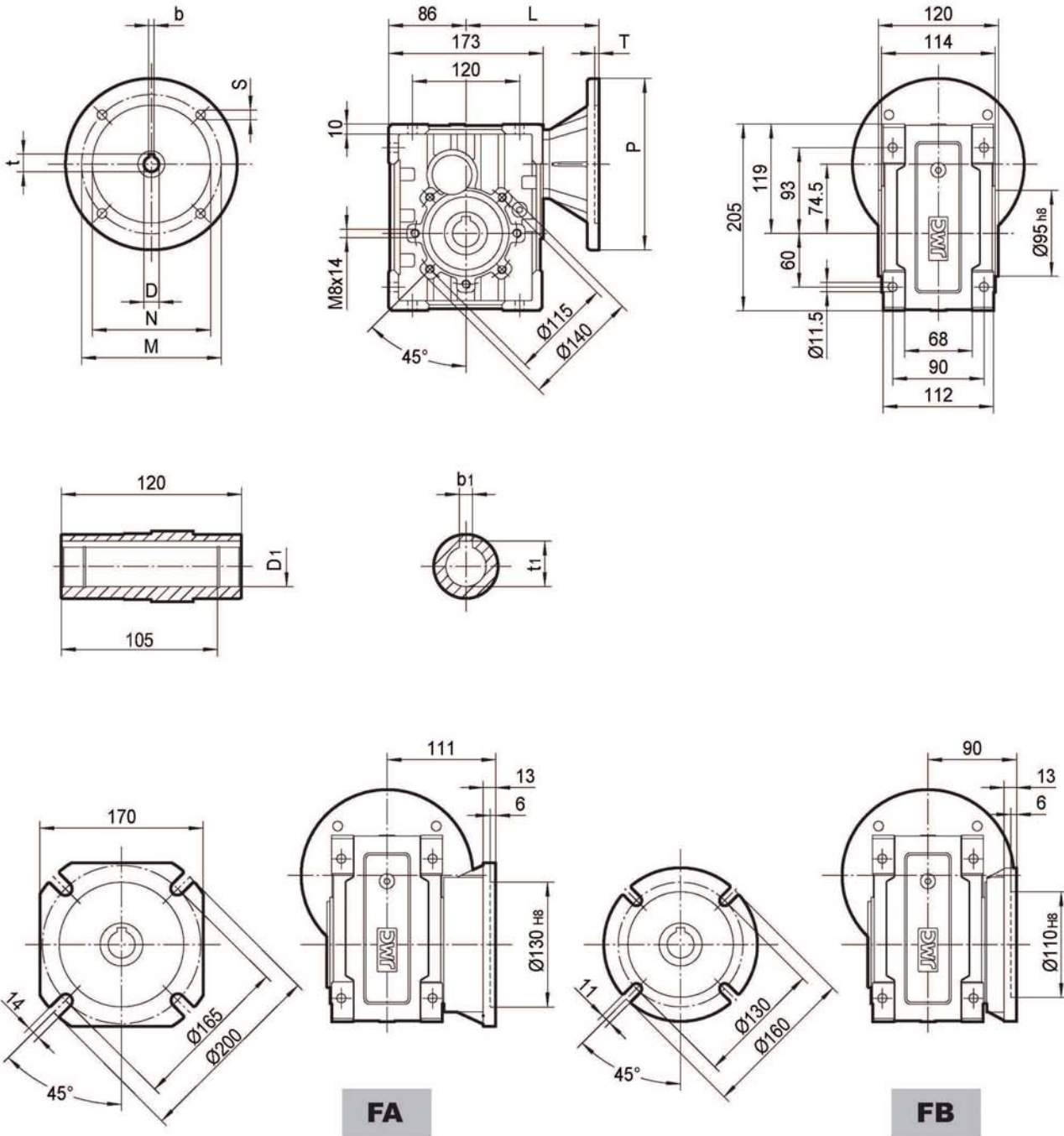


**TKM48B..**



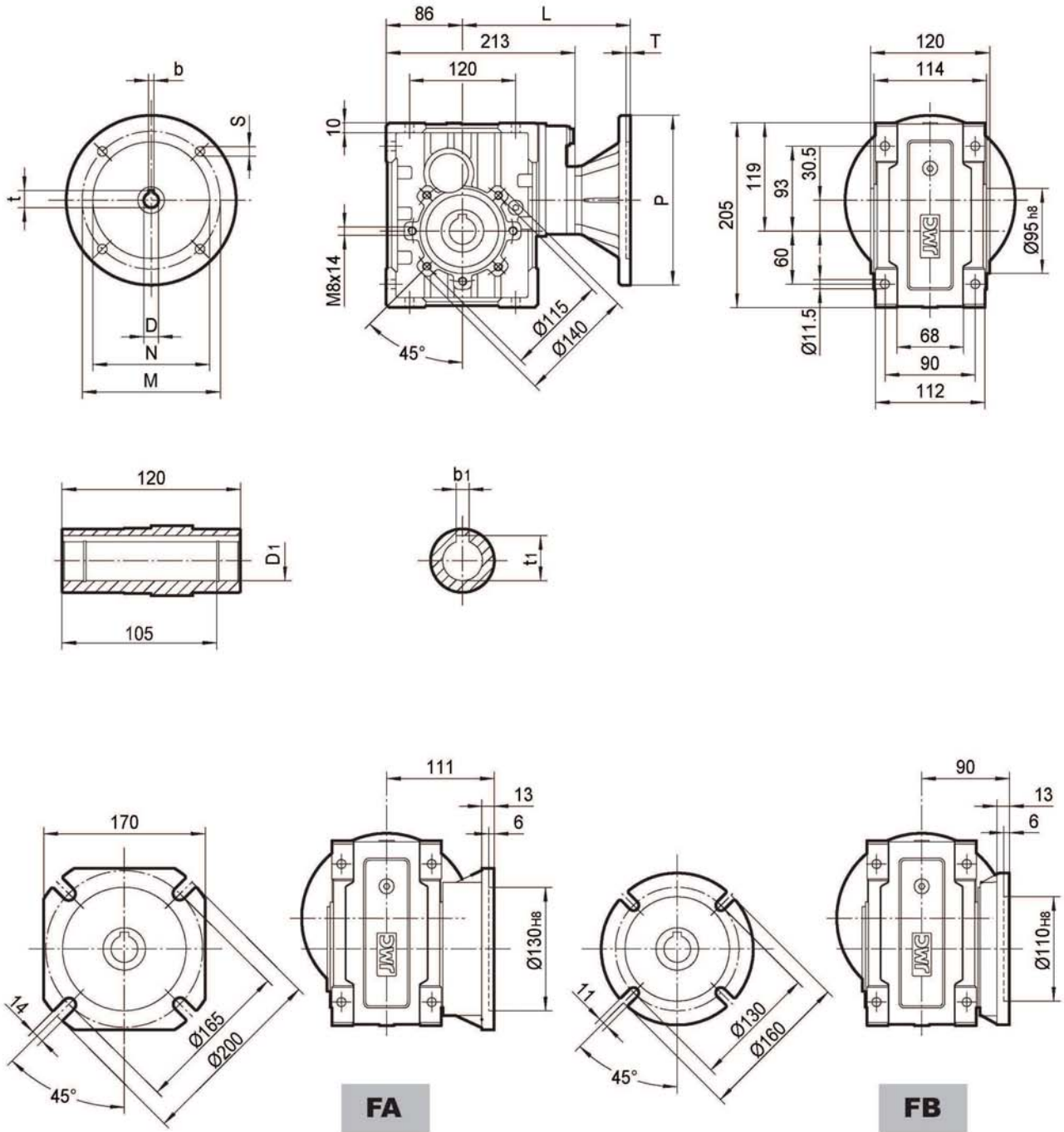
**FA**

**FB**

IEC	D <sub>E8</sub>	b	t	P	M	N	S	T	L	D <sub>1 H8</sub>	b <sub>1</sub>	t <sub>1</sub>
71B5	14	5	16.3	160	130	110	9	4	146	28	8	31.3
80B5	19	6	21.8	200	165	130	11	4	166	30*	8*	33.3*
80B14	19	6	21.8	120	100	80	7	4	166	35*	10*	38.3*
90B5	24	8	27.3	200	165	130	11	4	166	* Only on request		
90B14	24	8	27.3	140	115	95	9	4	166			
100/112B5	28	8	31.3	250	215	180	13.5	4.5	176	* Only on request		
100/112B14	28	8	31.3	160	130	110	9	4.5	176			

Weight without motor  
≈ 9.2 kg

**TKM48C..**

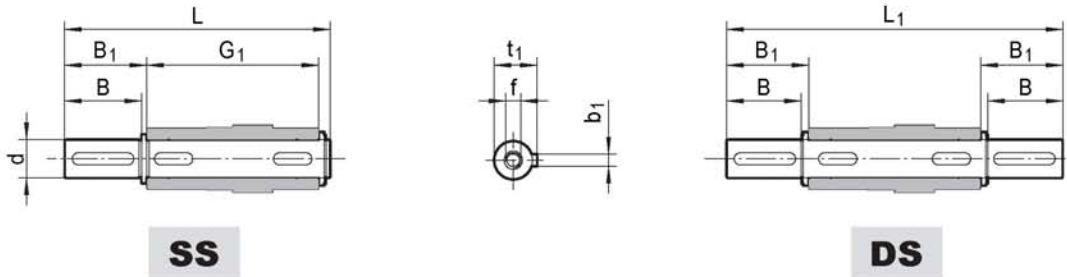


IEC	D <sub>E8</sub>	b	t	P	M	N	S	T	L	D <sub>1 H8</sub>	b <sub>1</sub>	t <sub>1</sub>
63B5	11	4	12.8	140	115	95	9	4	179	28	8	31.3
71B5	14	5	16.3	160	130	110	9	4	186	30*	8*	33.3*
80B5	19	6	21.8	200	165	130	11	4	206	35*	10*	38.3*
80B14	19	6	21.8	120	100	80	7	4	206	* Only on request		
90B5	24	8	27.3	200	165	130	11	4	206			
90B14	24	8	27.3	140	115	95	9	4	206			

Weight without motor  
≈ 10.8 kg

## 8. ACCESSORIES OUTLINE DIMENSION SHEET

### 8.1 Output Shafts

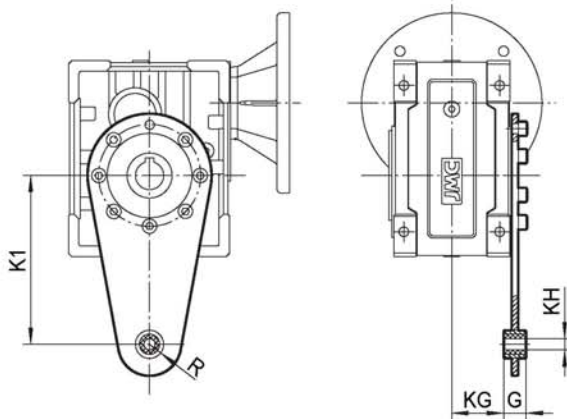


	d <sub>h6</sub>	B	B <sub>1</sub>	G <sub>1</sub>	L	L <sub>1</sub>	f	b <sub>1</sub>	t <sub>1</sub>
TKM28	25	50	53.5	92	153	199	M10x22	8	28
TKM38	25	50	53.5	112	173	219	M10x22	8	28
TKM48	28	60	63.5	120	192	247	M10x22	8	31
TKM58	35	80	84.5	140	234	309	M12x28	10	38
TKM68	42	80	84.5	155	249	324	M16x36	12	45
TKB38	25	60	65	120	192	246.4	M8x19	8	28
TKB48_d 28	28	60	65	127	199	255	M8x20	8	31
TKB48_d 30	30	60	65	127	199	255	M10x22	8	33
TKB58	35	60	65	140	214	268	M12x22	10	38
TKB68	42	75	80	155	244	313.5	M12x28	12	45

\* Only on request

### 8.2 Torque Arm

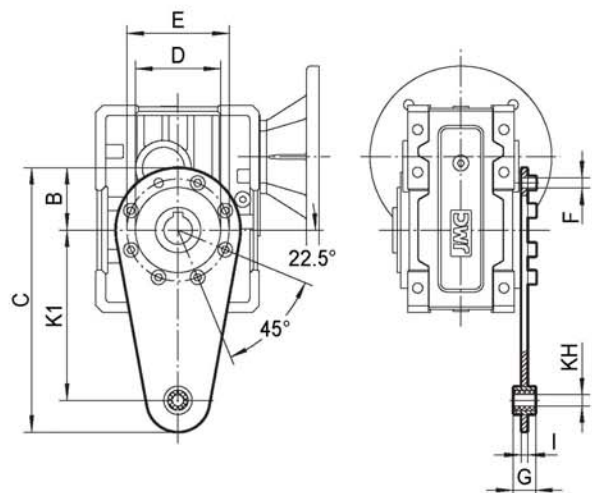
#### 8.2.1 TKM.. Torque Arm



	K1	G	KG	KH	R
TKM28	100	14	38.5	10	18
TKM38	150	14	49	10	18
TKM48	200	25	47.5	20	30
TKM58	200	25	57.5	20	30
TKM68	250	30	62	25	35

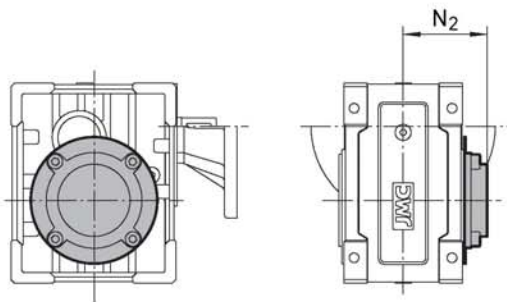
#### 8.2.2 TKB.. Torque Arm

	K1	B	C	D	E	F	G	KH	I
TKB38	150	55	233	75	90	9	20	10	6
TKB48	200	60	300	90	110	9	25	20	6
TKB58	200	80	318	110	130	11	25	20	6
TKB68	250	100	388	130	165	13	25	20	6



**8.3 Cover**

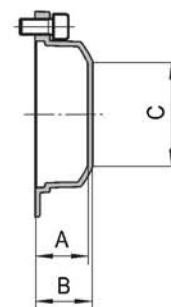
**8.3.1 TKM.. Cover**



	<b>N<sub>2</sub></b>
<b>TKM28</b>	63
<b>TKM38</b>	73
<b>TKM48</b>	79
<b>TKM58</b>	94
<b>TKM68</b>	102

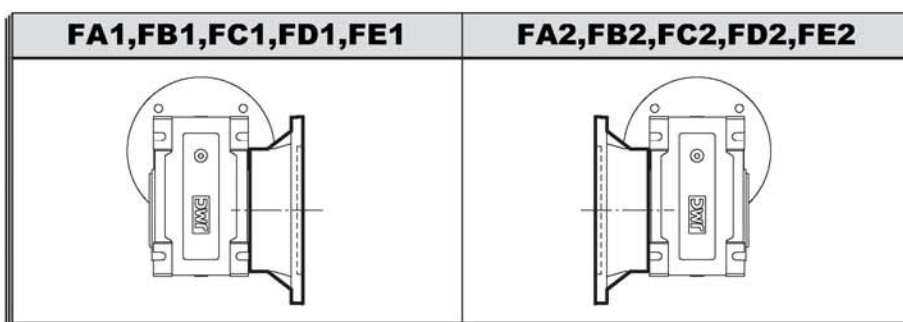
**8.3.2 TKB.. Cover**

	<b>A</b>	<b>B</b>	<b>C</b>
<b>TKB38</b>	26.5	29	Φ35
<b>TKB48</b>	24.5	27	Φ54
<b>TKB58</b>	26.5	29	Φ71
<b>TKB68</b>	27.5	30	Φ89



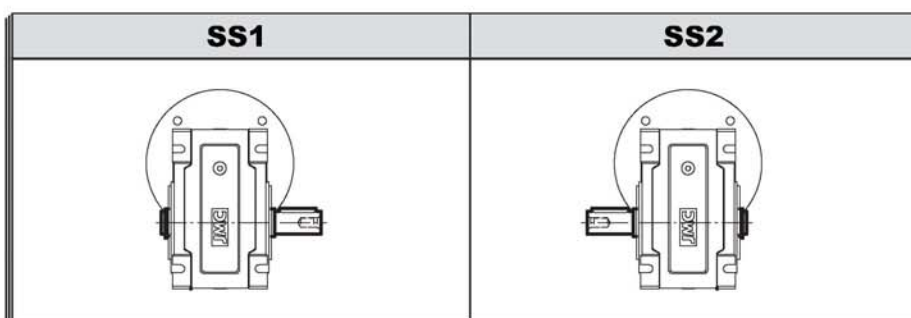
**9. INSTALLATION POSITIONS DIAGRAM**

**9.1 Position diagram for output flange**






Unless specified otherwise, the gear units is supplied with the flange in pos. F.1 referred to position B3.

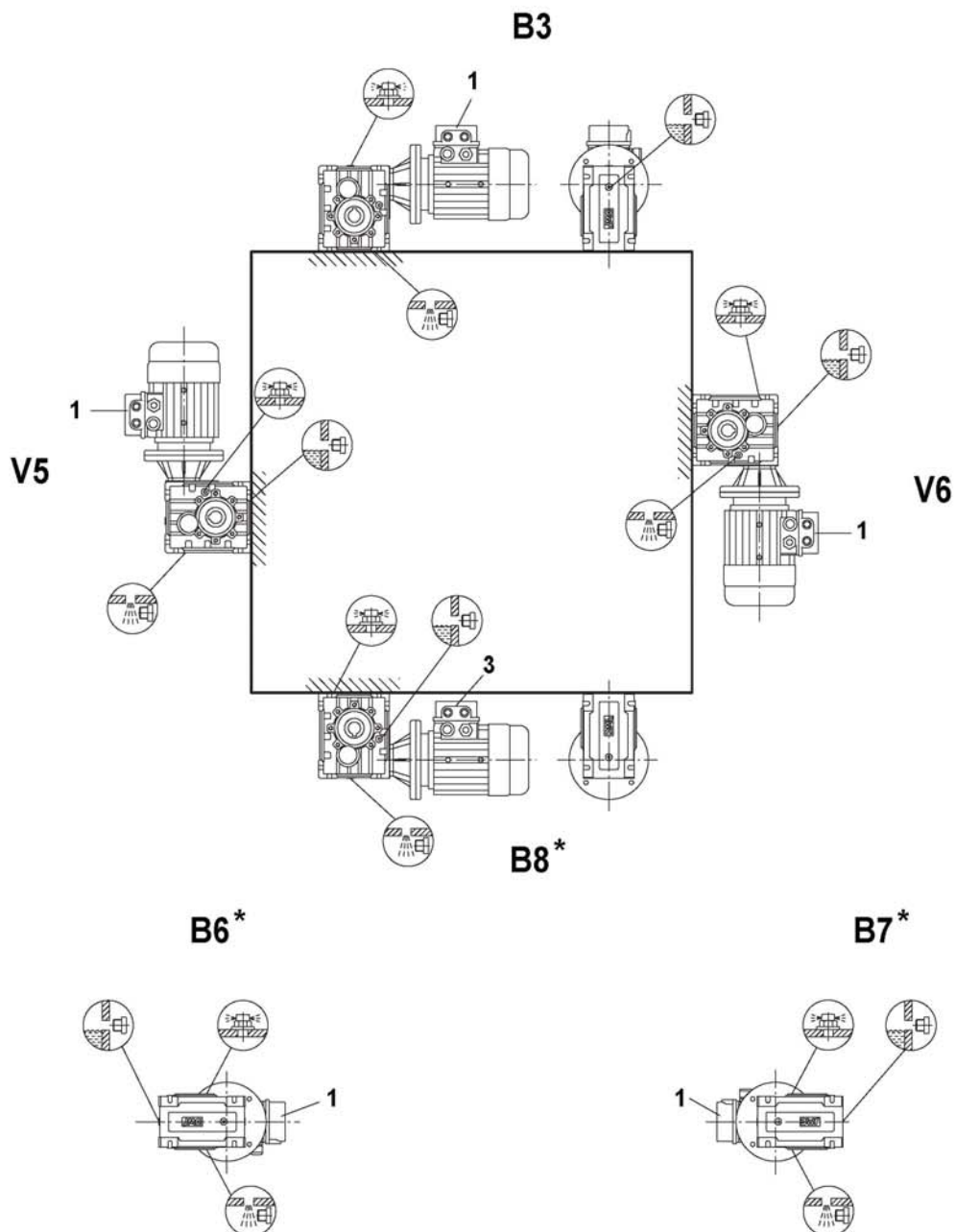
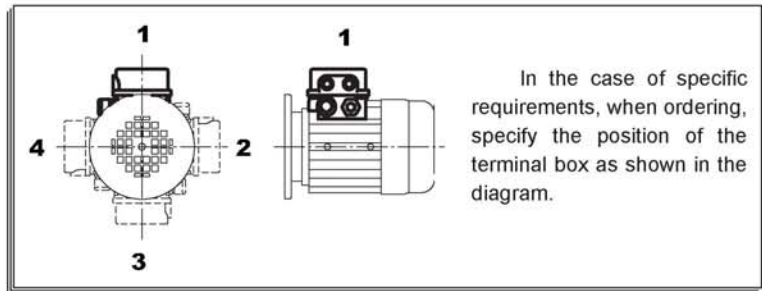
**9.2 Position diagram for single output shaft**





**9.3 TKM.. OR TKB.. Mounting Positions**

Symbol	Meaning
	Breather valve
	Oil level plug
	Oil drain plug



\*: It means the lubricant can't be added according to the oil level line plug, but also higher the plug the fill quantity as shown in the table