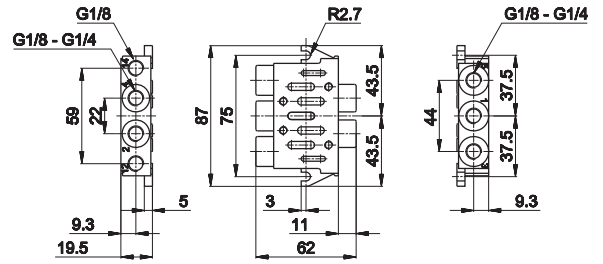


ISO 1 - Single sub-base, side connections



Notes	Connection	Material	Weight Kg	Part no.
in line connections	G1/8	zamak	0,250	BF-1060
in line connections	G1/4	zamak	0,230	BF-1061

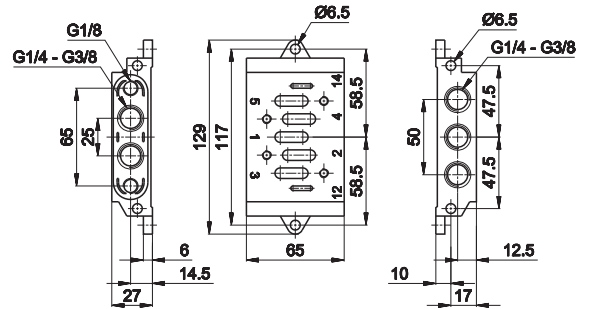


1 = Supply port 3 - 5 = Exhaust
2 - 4 = Use 12 - 14 = Pilots

ISO 2 - Single sub-base, side connections



Notes	Connection	Material	Weight Kg	Part no.
in line connections	G1/4	zamak	0,640	BF-1150
in line connections	G3/8	zamak	0,650	BF-1151

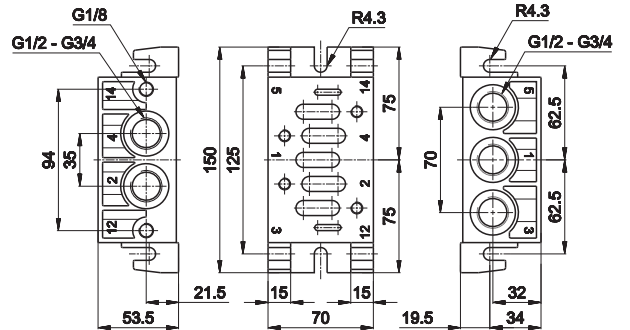


1 = Supply port 3 - 5 = Exhaust
2 - 4 = Use 12 - 14 = Pilots

ISO 3 - Single sub-base, side connections



Notes	Connection	Material	Weight Kg	Part no.
in line connections	G1/2	aluminium	0,740	BF-3060
in line connections	G3/4	aluminium	0,740	BF-3061

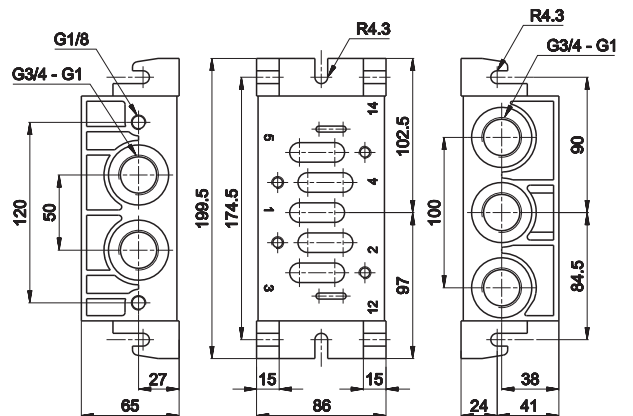


1 = Supply port 3 - 5 = Exhaust
2 - 4 = Use 12 - 14 = Pilots

ISO 4 - Single sub-base, side connections

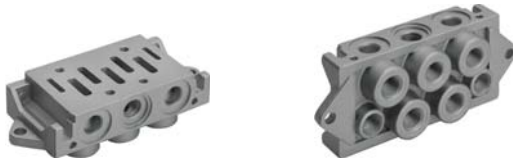


Notes	Connection	Material	Weight Kg	Part no.
in line connections	G3/4	aluminium	1,280	BF-4060
dorsal and side connections	G1	aluminium	1,280	BF-4061



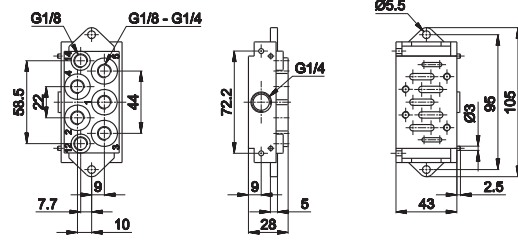
1 = Supply port 3 - 5 = Exhaust
2 - 4 = Use 12 - 14 = Pilots

ISO 1 - Single modular or Manifold sub-base, dorsal connections, separate exhausts



Notes	Connection	Material	Weight Kg	Part no.
dorsal connections	G1/8	zamak	0,350	BF-1062
dorsal connections	G1/4	zamak	0,330	BF-1063

Single assembly: close side ports (G1/8 - G1/4)
 Manifold assembly with common inlet: close dorsal connections n.1
 With incorporated screws and seal

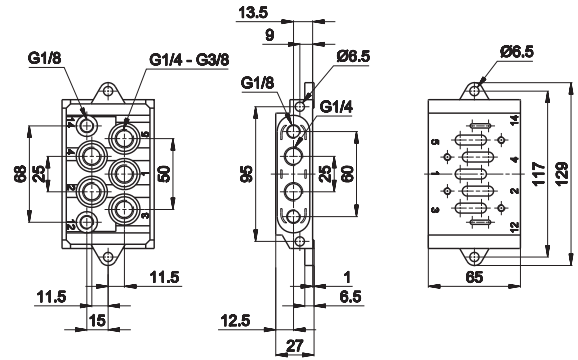


1 = Supply port 3 - 5 = Exhaust
 2 - 4 = Use 12 - 14 = Pilots

ISO 2 - Single sub-base, dorsal connections

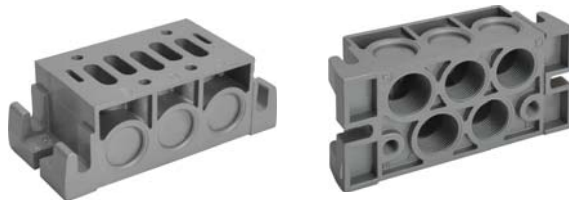


Notes	Connection	Material	Weight Kg	Part no.
dorsal connections	G1/4	zamak	0,640	BF-1152
dorsal connections	G3/8	zamak	0,650	BF-1153

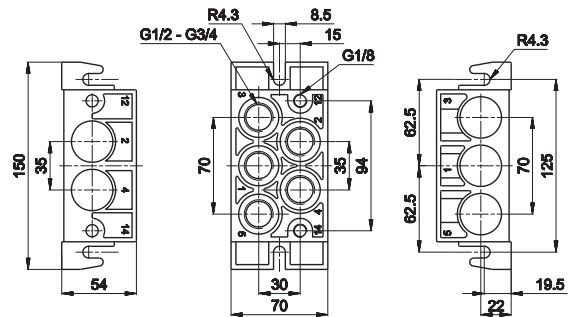


1 = Supply port 3 - 5 = Exhaust
 2 - 4 = Use 12 - 14 = Pilots

ISO 3 - Single sub-base, dorsal connections

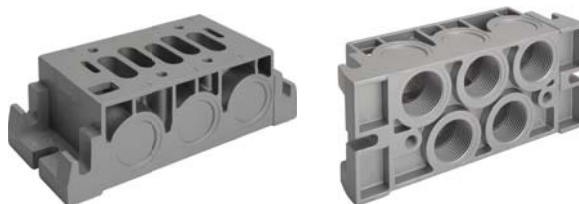


Notes	Connection	Material	Weight Kg	Part no.
dorsal connections	G3/4	aluminium	0,720	BF-3063

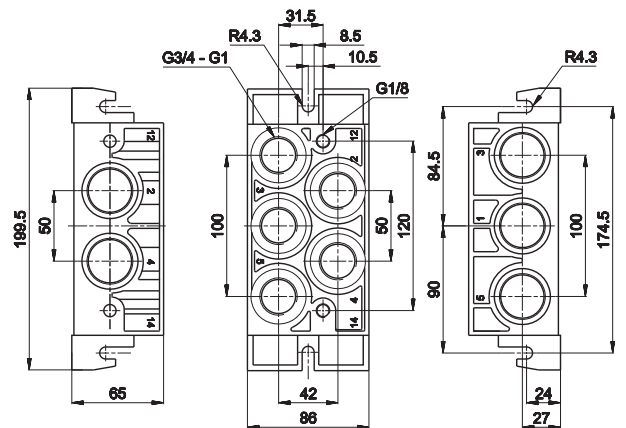


1 = Supply port 3 - 5 = Exhaust
 2 - 4 = Use 12 - 14 = Pilots

ISO 4 - Single sub-base, dorsal connections



Notes	Connection	Material	Weight Kg	Part no.
dorsal connections	G3/4	aluminium	1,240	BF-4062
dorsal connections	G1	aluminium	1,240	BF-4063



1 = Supply port 3 - 5 = Exhaust
 2 - 4 = Use 12 - 14 = Pilots

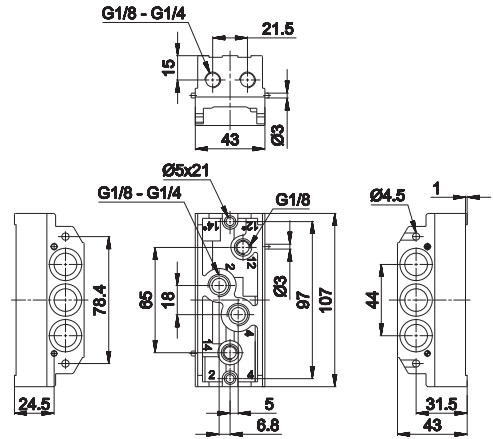
2
Standardized valves

ISO 1 - Manifold universal system sub-base, dorsal and side connections, conveyed exhausts



Notes	Connection	Material	Weight	Part no.
			Kg	
dorsal and side connections	G1/8	aluminium	0,280	BF-1071
dorsal and side connections	G1/4	aluminium	0,275	BF-1072
side pneumatic impulses	G1/8	aluminium	0,300	BF-1071S
side pneumatic impulses	G1/4	aluminium	0,295	BF-1072S

Dorsal and side connections possible. Close unused ports with caps.
With incorporated screws, seals and caps included



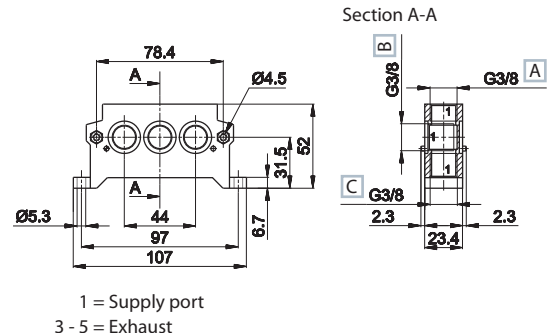
1 = Supply port
2 - 4 = Use
3 - 5 = Exhaust
12 - 14 = Pilots
12* - 14* = Side pilots

ISO 1 - Manifold universal system inlet plate



- A On top connections
- B In line connections
- C Dorsal connetions

Notes	Connection	Material	Weight	Part no.
			Kg	
in line connections	G3/8	zamak	0,355	BF-1064
on top connections	G3/8	zamak	0,355	BF-1065
dorsal connections	G3/8	zamak	0,355	BF-1066



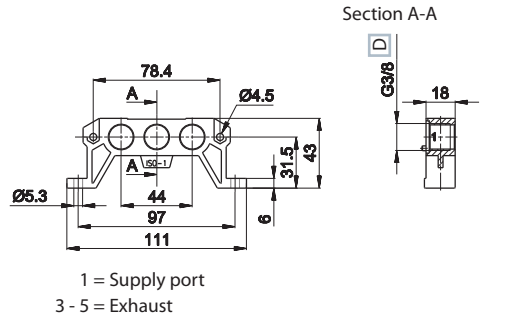
1 = Supply port
3 - 5 = Exhaust



- D Only in line connections

Notes	Connection	Material	Weight	Part no.
			Kg	
only in line connections	G3/8	aluminium	0,120	BF-1068

When battery exceeds 4 units, the mounting of 2 plates is recommended
Mixed version available upon request
With incorporated screws and seal



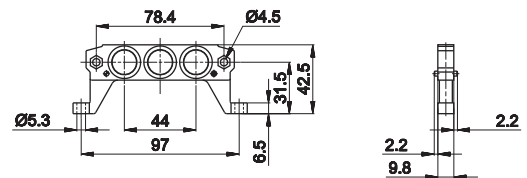
1 = Supply port
3 - 5 = Exhaust

ISO 1 - Manifold universal system diaphragm

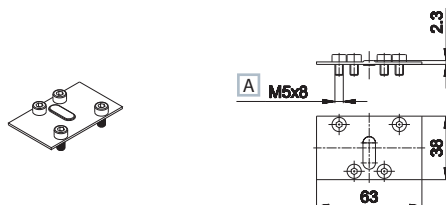


Notes	Connection	Material	Weight	Part no.
			Kg	
-	-	zamak	0,090	BF-1070

The diaphragm is not only the end plate of the manifold but it is also coupled with the exhaust regulator to separate two sub-bases and regulate the valves independently. In this case break the central blind hole.
To get two or more pressures, break the two side blind holes.



BF-1085



A ISO 4762

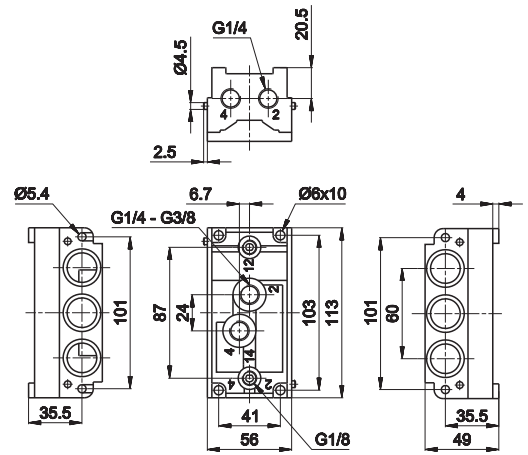
ISO 1 - Closing plate for sub-base 1
material: steel
weight: 0,030 Kg (for all sub-base versions)

ISO 2 - Manifold universal system sub-base, dorsal and side connections, conveyed exhausts



Notes	Connection	Material	Weight Kg	Part no.
dorsal and side connections	G1/4	zamak	0,800	BF-1160
dorsal and side connections	G3/8	zamak	0,800	BF-1161

Dorsal and side connections possible. Close unused ports with caps.
With incorporated screw, seals and caps included



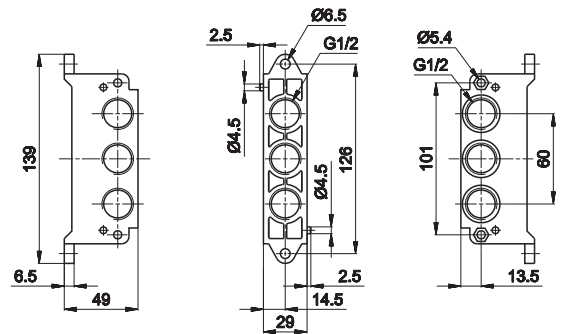
1 = Supply port 3 - 5 = Exhaust
2 - 4 = Use 12 - 14 = Pilots

ISO 2 - Manifold Universal system inlet plate



Notes	Connection	Material	Weight Kg	Part no.
in line connections	G1/2	zamak	0,460	BF-1154
dorsal connections	G1/2	zamak	0,460	BF-1155

When battery exceeds 4 units, the mounting of 2 plates is recommended
Mixed version available upon request
With incorporated screw and seals

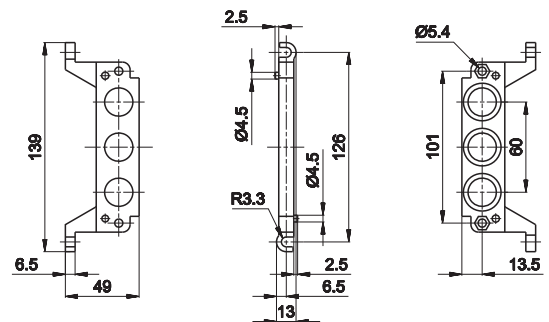


ISO 2 - Manifold universal system diaphragm

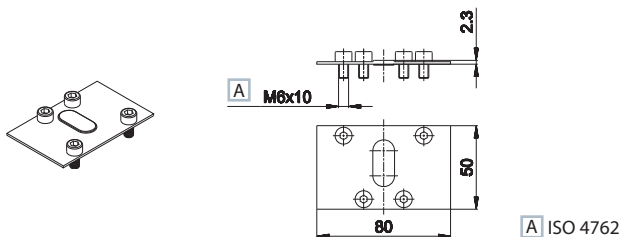


Notes	Connection	Material	Weight Kg	Part no.
-	-	zamak	0,160	BF-1162

The diaphragm is not only the end plate of the manifold but it is also coupled with the exhaust regulator to separate two sub-bases and regulate the valves independently. In this case break the central blind hole.
To get two or more pressures, break the two side blind holes.

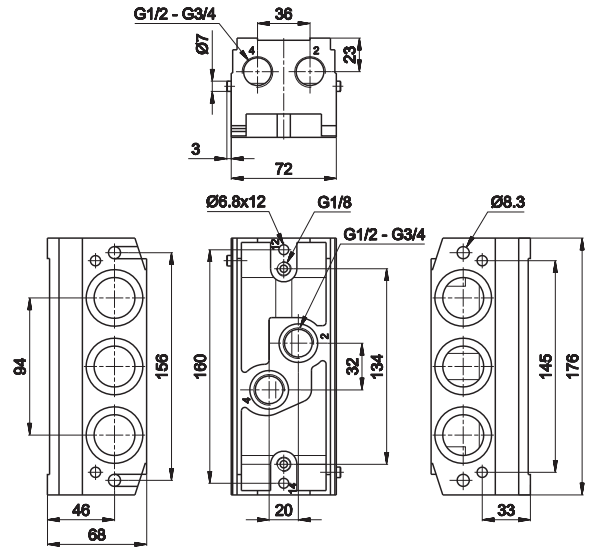


BF-1175



ISO 2 - Closing plate for sub-base 2
material: steel
weight: 0,050 Kg (for all sub-base versions)

ISO 3 - Manifold universal system sub-base, dorsal and side connections, conveyed exhausts

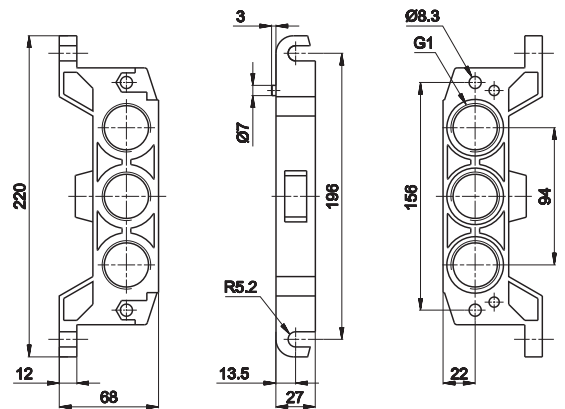


Notes	Connection	Material	Weight Kg	Part no.
dorsal and side connections	G1/2	aluminium	1,100	BF-3071
dorsal and side connections	G3/4	aluminium	1,100	BF-3072

Dorsal and side connections possible. Close unused ports with caps.
With incorporated screws, seals and caps included

1 = Supply port 3 - 5 = Exhaust
2 - 4 = Use 12 - 14 = Pilots

ISO 3 - Manifold Universal system inlet plate

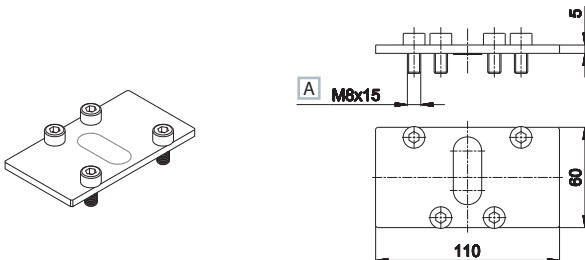


Notes	Connection	Material	Weight Kg	Part no.
in line connections	G1	aluminium	0,440	BF-3064

When battery exceeds 4 units, the mounting of 2 plates is recommended
Mixed version available upon request
With incorporated screws and seals

BF-3175

BF-3082



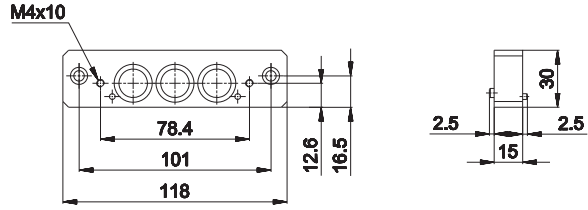
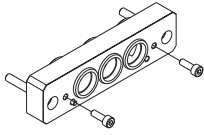
A ISO 4762



ISO 3 - Closing plate for sub-base 3
material: steel
weight: 0,080 Kg (for all sub-base versions)

ISO 3 - Universal system Cap
material: steel
weight: 0,020 Kg
To be used to reach two pressures

BF-1190



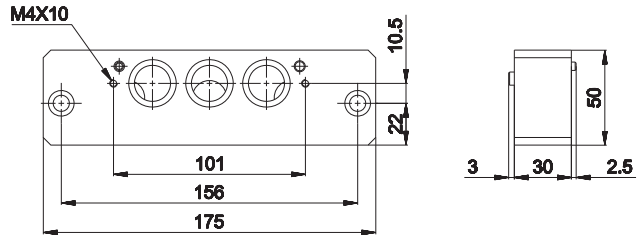
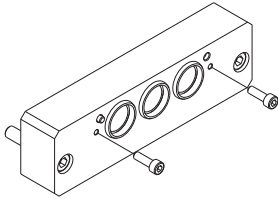
ISO - Connecting interface for universal sub-bases size 1 and 2

material: steel

weight: 0,110 Kg

It allows the use of size 1 and 2 valves in one manifold with conveyed pressure and exhausts. (Upon request: pressure and/or exhausts separated)

BF-3190



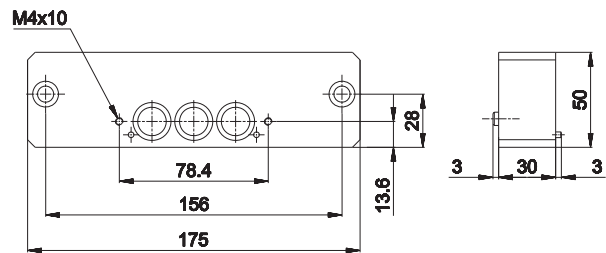
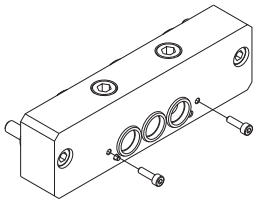
ISO - Connecting interface for universal sub-bases size 2 and 3

material: steel

weight: 0,570 Kg

It allows the use of size 2 and 3 valves in one manifold with conveyed pressure and exhausts. (Upon request: pressure and/or exhausts separated)

BF-3191



ISO - Connecting interface for universal sub-bases size 1 and 3

material: steel

weight: 0,570 Kg

It allows the use of size 1 and 3 valves in one manifold with conveyed pressure and exhausts. (Upon request: pressure and/or exhausts separated)